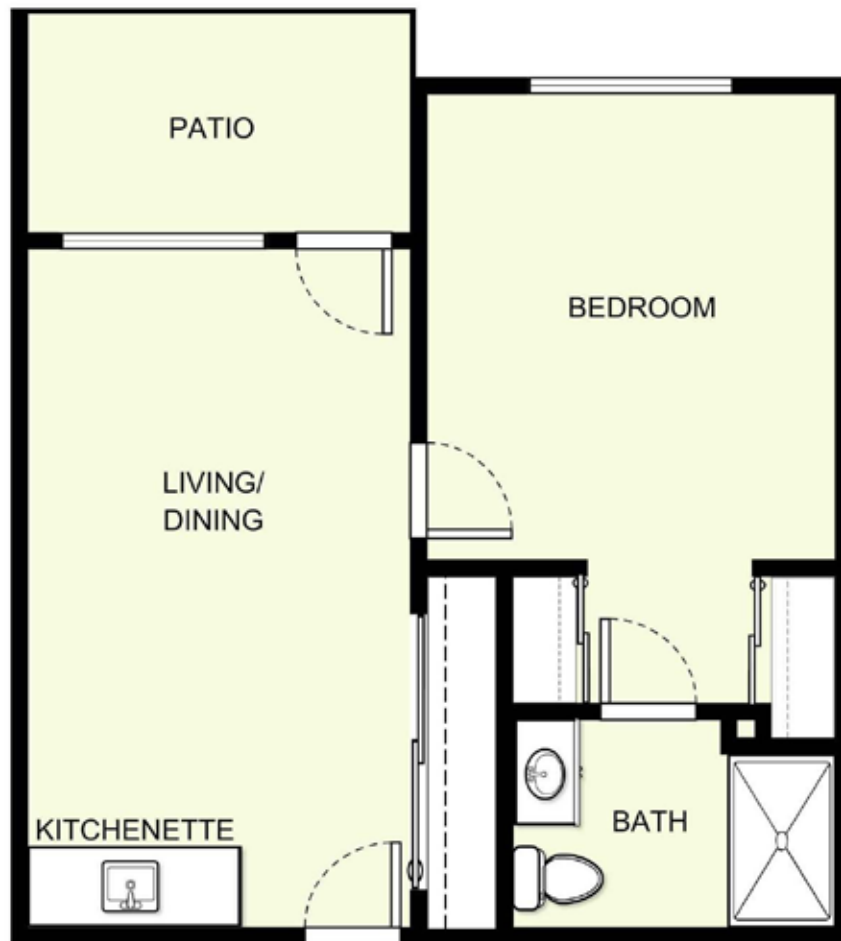


One Bedroom B-1

549 sq. ft.*



Date _____ Name _____

Apartment No. _____ Apartment Rate _____ Expires _____

Notes _____



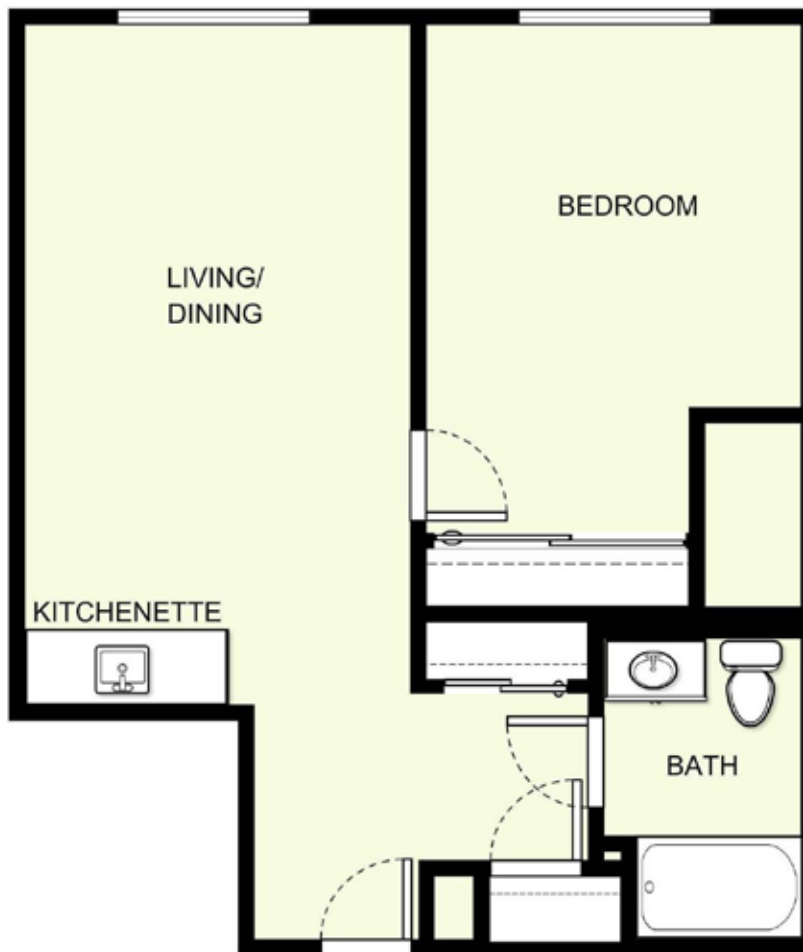
MULBERRY ESTATES

Atria Retirement Canada

*Square footage and dimensions are approximations and may vary between individual apartments. Please see community management for details.

One Bedroom B-2

618 sq. ft.*



Date _____ Name _____

Apartment No. _____ Apartment Rate _____ Expires _____

Notes _____



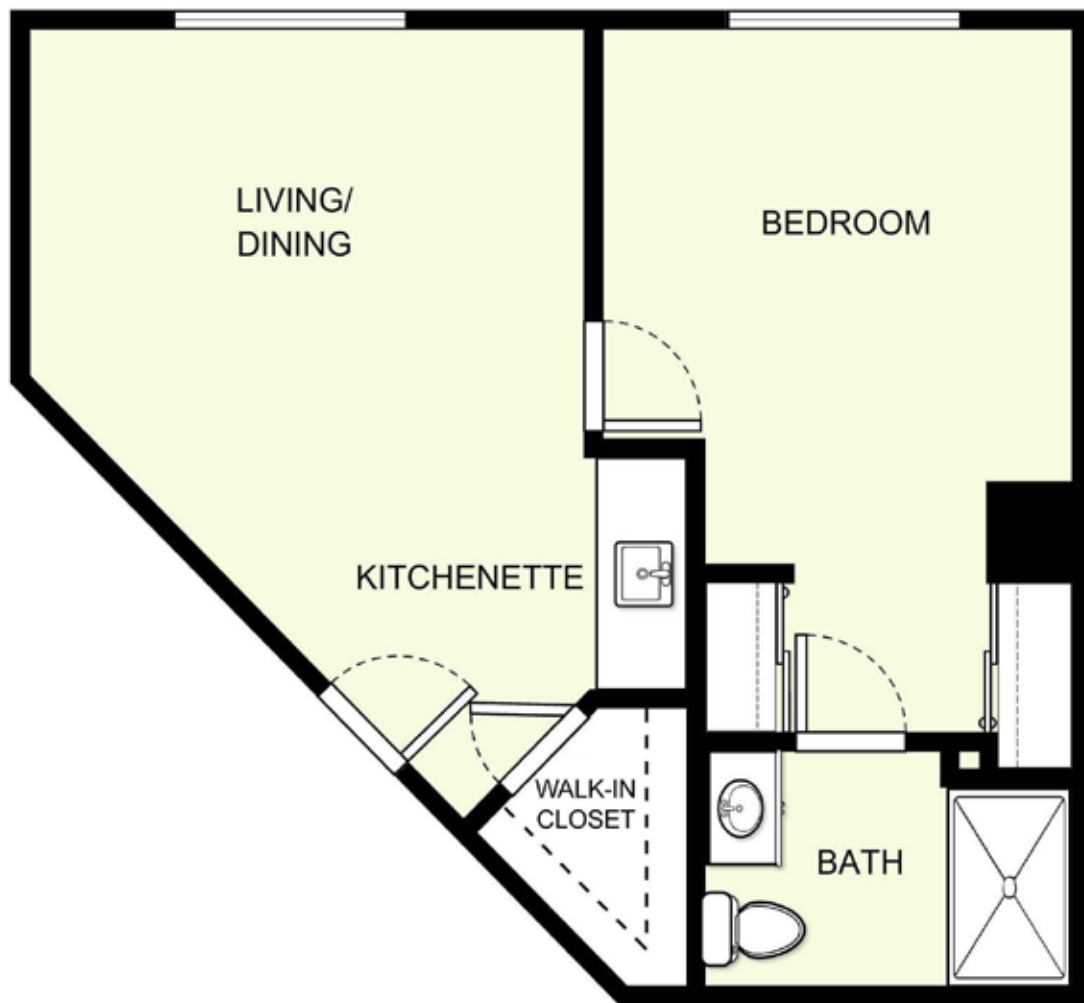
MULBERRY ESTATES

Atria Retirement Canada

*Square footage and dimensions are approximations and may vary between individual apartments. Please see community management for details.

One Bedroom B-3

555 sq. ft.*



Date _____ Name _____

Apartment No. _____ Apartment Rate _____ Expires _____

Notes _____



MULBERRY ESTATES

Atria Retirement Canada

*Square footage and dimensions are approximations and may vary between individual apartments. Please see community management for details.

One Bedroom B-4

687 sq. ft.*



Date _____ Name _____

Apartment No. _____ Apartment Rate _____ Expires _____

Notes _____



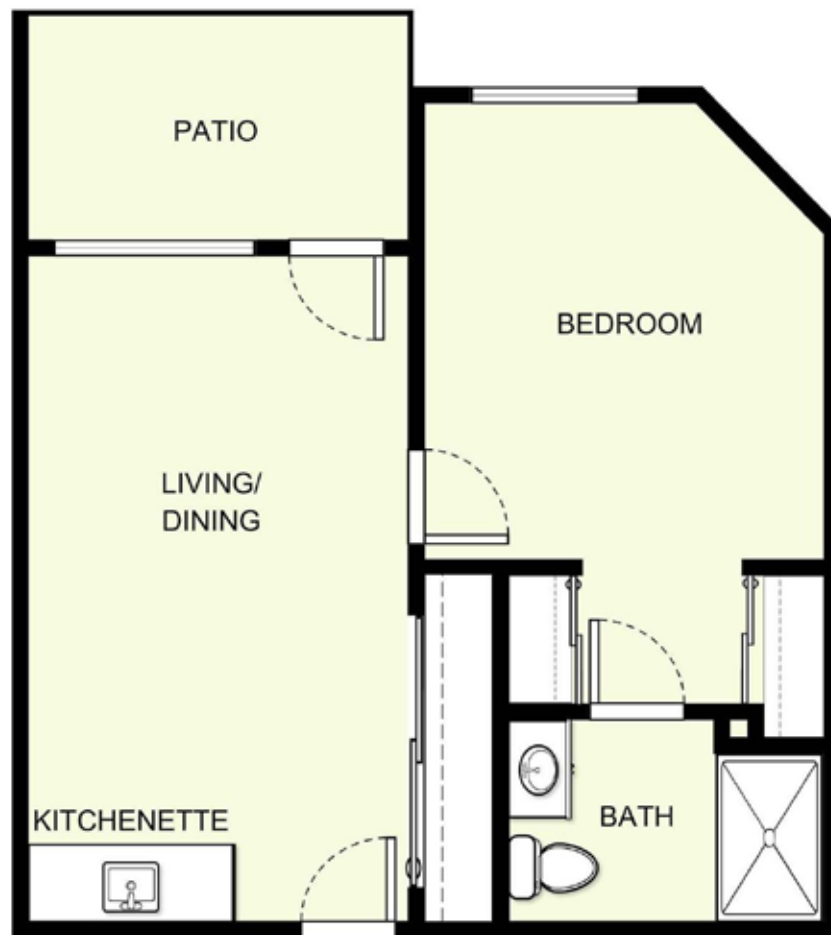
MULBERRY ESTATES

Atria Retirement Canada

*Square footage and dimensions are approximations and may vary between individual apartments. Please see community management for details.

One Bedroom B-5

542 sq. ft.*



Date _____ Name _____

Apartment No. _____ Apartment Rate _____ Expires _____

Notes _____



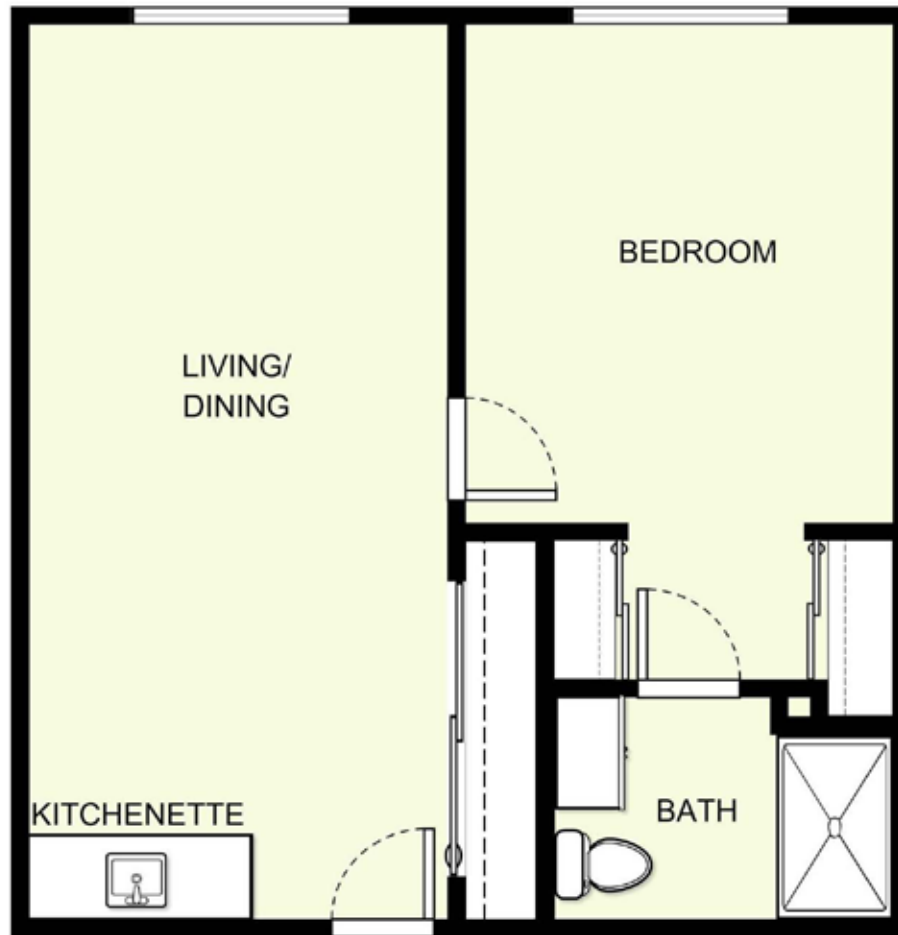
MULBERRY ESTATES

Atria Retirement Canada

*Square footage and dimensions are approximations and may vary between individual apartments. Please see community management for details.

One Bedroom B-6

600 sq. ft.*



Date _____ Name _____

Apartment No. _____ Apartment Rate _____ Expires _____

Notes _____



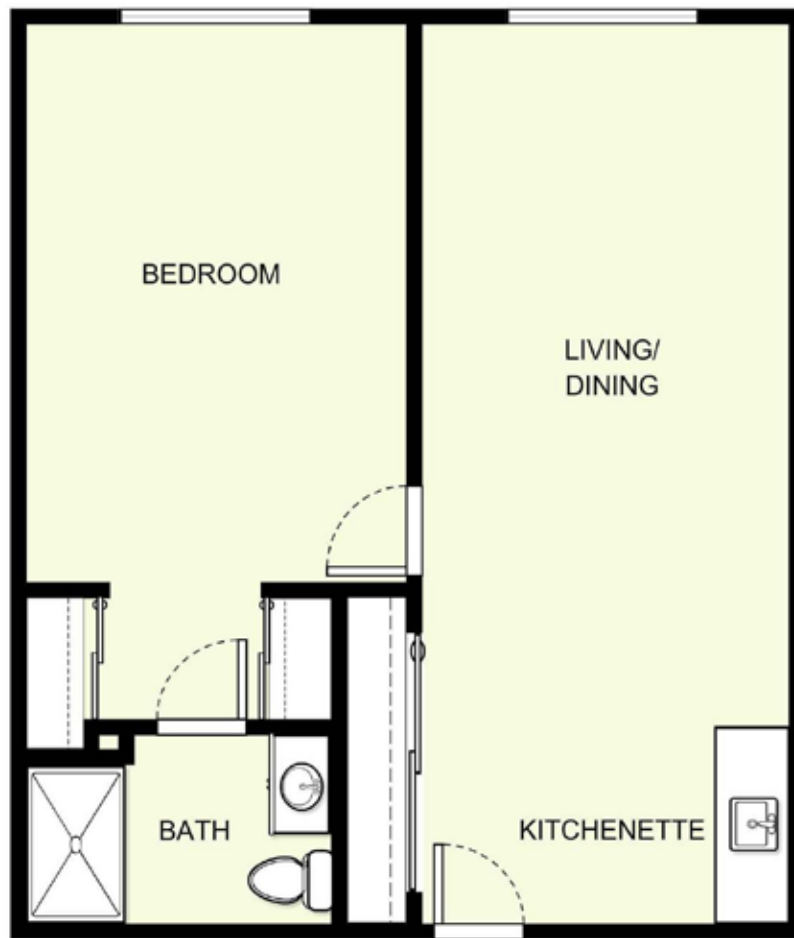
MULBERRY ESTATES

Atria Retirement Canada

*Square footage and dimensions are approximations and may vary between individual apartments. Please see community management for details.

One Bedroom B-7

696 sq. ft.*



Date _____ Name _____

Apartment No. _____ Apartment Rate _____ Expires _____

Notes _____



MULBERRY ESTATES

Aria Retirement Canada

*Square footage and dimensions are approximations and may vary between individual apartments. Please see community management for details.

One Bedroom B-8

705 sq. ft.*



Date _____ Name _____

Apartment No. _____ Apartment Rate _____ Expires _____

Notes _____



MULBERRY ESTATES

Atria Retirement Canada

*Square footage and dimensions are approximations and may vary between individual apartments. Please see community management for details.

One Bedroom B-9

894 sq. ft.*



Date _____ Name _____

Apartment No. _____ Apartment Rate _____ Expires _____

Notes _____



MULBERRY ESTATES

Aria Retirement Canada

*Square footage and dimensions are approximations and may vary between individual apartments. Please see community management for details.

One Bedroom B-10

706 sq. ft.*



Date _____ Name _____

Apartment No. _____ Apartment Rate _____ Expires _____

Notes _____



MULBERRY ESTATES

Atria Retirement Canada

*Square footage and dimensions are approximations and may vary between individual apartments. Please see community management for details.

One Bedroom B-11

610 sq. ft.*



Date _____ Name _____

Apartment No. _____ Apartment Rate _____ Expires _____

Notes _____



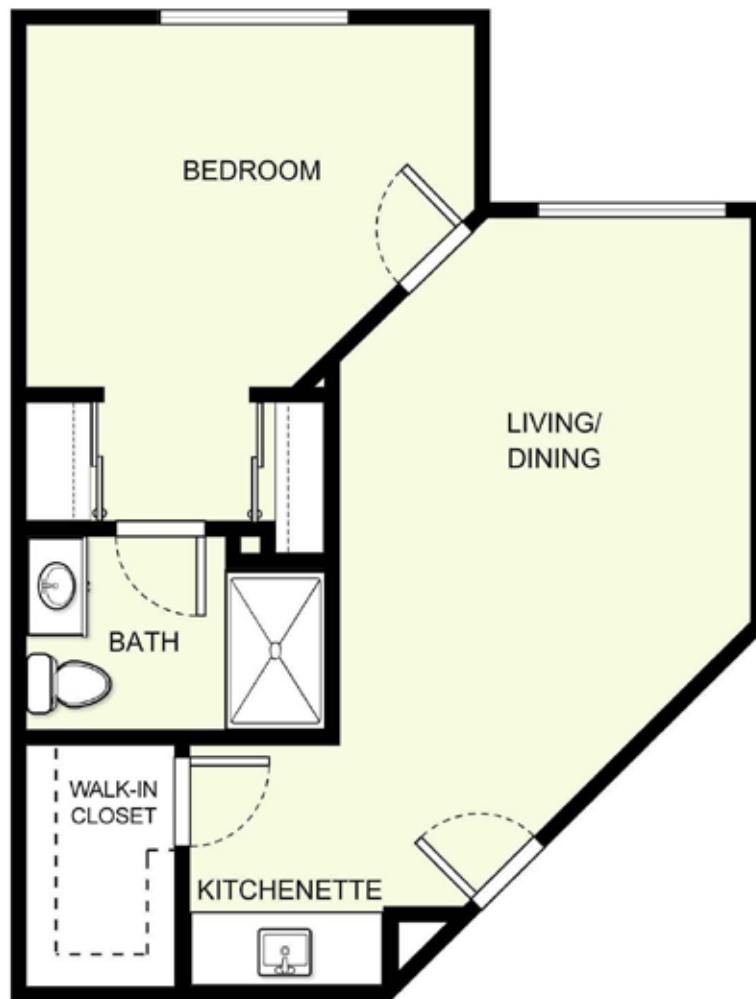
MULBERRY ESTATES

Atria Retirement Canada

*Square footage and dimensions are approximations and may vary between individual apartments. Please see community management for details.

One Bedroom B-12

600 sq. ft.*



Date _____ Name _____

Apartment No. _____ Apartment Rate _____ Expires _____

Notes _____



MULBERRY ESTATES

Atria Retirement Canada

*Square footage and dimensions are approximations and may vary between individual apartments. Please see community management for details.

One Bedroom B-13

578 sq. ft.*



Date _____ Name _____

Apartment No. _____ Apartment Rate _____ Expires _____

Notes _____



MULBERRY ESTATES

Atria Retirement Canada

*Square footage and dimensions are approximations and may vary between individual apartments. Please see community management for details.