

# Two Bedroom C-1

1,015 sq. ft.\*



Date \_\_\_\_\_ Name \_\_\_\_\_

Apartment No. \_\_\_\_\_ Apartment Rate \_\_\_\_\_ Expires \_\_\_\_\_

Notes \_\_\_\_\_

\_\_\_\_\_

\_\_\_\_\_

\_\_\_\_\_



**CRYSTAL VIEW LODGE**

*Aria* Retirement Canada

\*Square footage and dimensions are approximations and may vary between individual apartments. Please see community management for details.

# Two Bedroom C-2

977 sq. ft.\*



Date \_\_\_\_\_ Name \_\_\_\_\_

Apartment No. \_\_\_\_\_ Apartment Rate \_\_\_\_\_ Expires \_\_\_\_\_

Notes \_\_\_\_\_

\_\_\_\_\_

\_\_\_\_\_

\_\_\_\_\_



**CRYSTAL VIEW LODGE**

*Atria* Retirement Canada

\*Square footage and dimensions are approximations and may vary between individual apartments. Please see community management for details.

# Two Bedroom C-3

877 sq. ft.\*



Date \_\_\_\_\_ Name \_\_\_\_\_

Apartment No. \_\_\_\_\_ Apartment Rate \_\_\_\_\_ Expires \_\_\_\_\_

Notes \_\_\_\_\_

\_\_\_\_\_

\_\_\_\_\_

\_\_\_\_\_



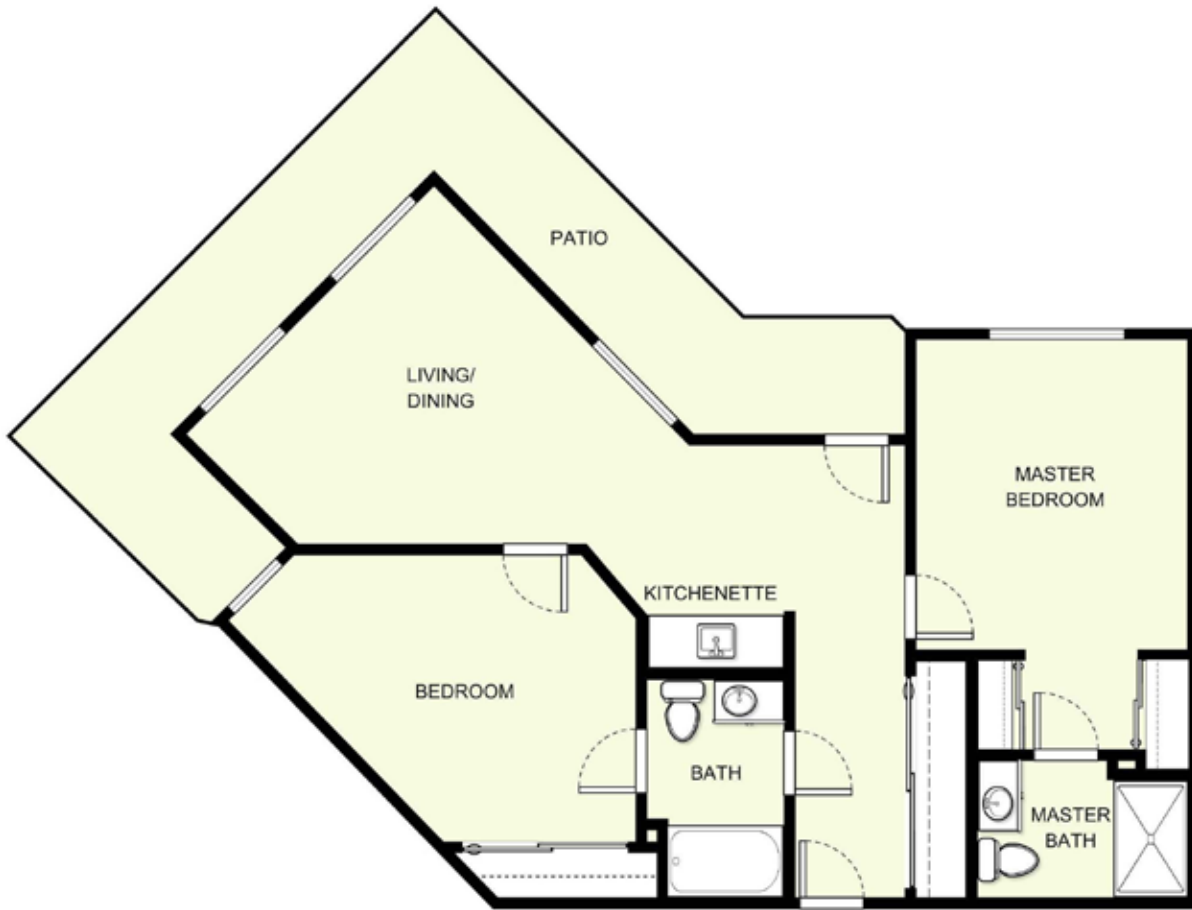
**CRYSTAL VIEW LODGE**

*Atria* Retirement Canada

\*Square footage and dimensions are approximations and may vary between individual apartments. Please see community management for details.

# Two Bedroom C-4

970 sq. ft.\*



Date \_\_\_\_\_ Name \_\_\_\_\_

Apartment No. \_\_\_\_\_ Apartment Rate \_\_\_\_\_ Expires \_\_\_\_\_

Notes \_\_\_\_\_

---

---

---

---



**CRYSTAL VIEW LODGE**

*Atria* Retirement Canada

\*Square footage and dimensions are approximations and may vary between individual apartments. Please see community management for details.