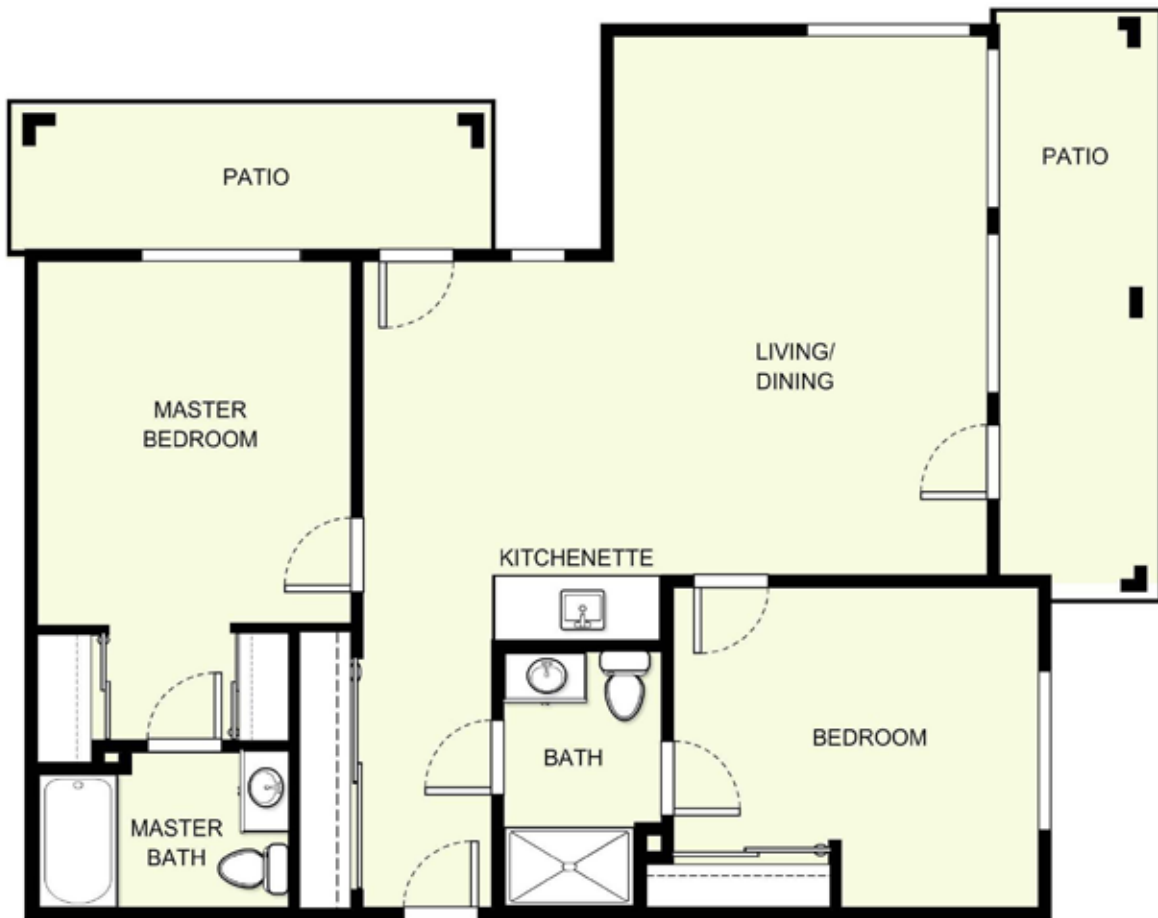


Two Bedroom C-1

1,056 sq. ft.*



Date _____ Name _____

Apartment No. _____ Apartment Rate _____ Expires _____

Notes _____



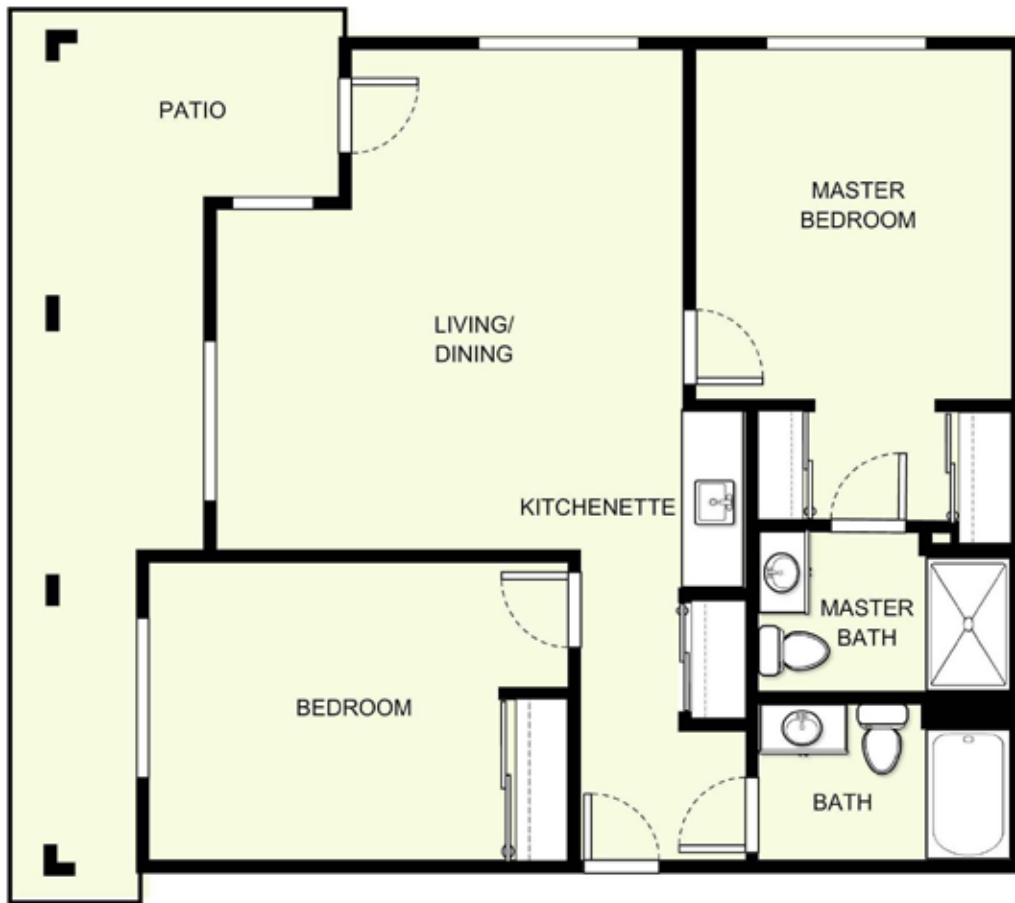
THE COURT AT RUSHDALE

Atria Retirement Canada

*Square footage and dimensions are approximations and may vary between individual apartments. Please see community management for details.

Two Bedroom C-2

937 sq. ft.*



Date _____ Name _____

Apartment No. _____ Apartment Rate _____ Expires _____

Notes _____



THE COURT AT RUSHDALE

Atria Retirement Canada

*Square footage and dimensions are approximations and may vary between individual apartments. Please see community management for details.

Two Bedroom C-3

877 sq. ft.*



Date _____ Name _____

Apartment No. _____ Apartment Rate _____ Expires _____

Notes _____



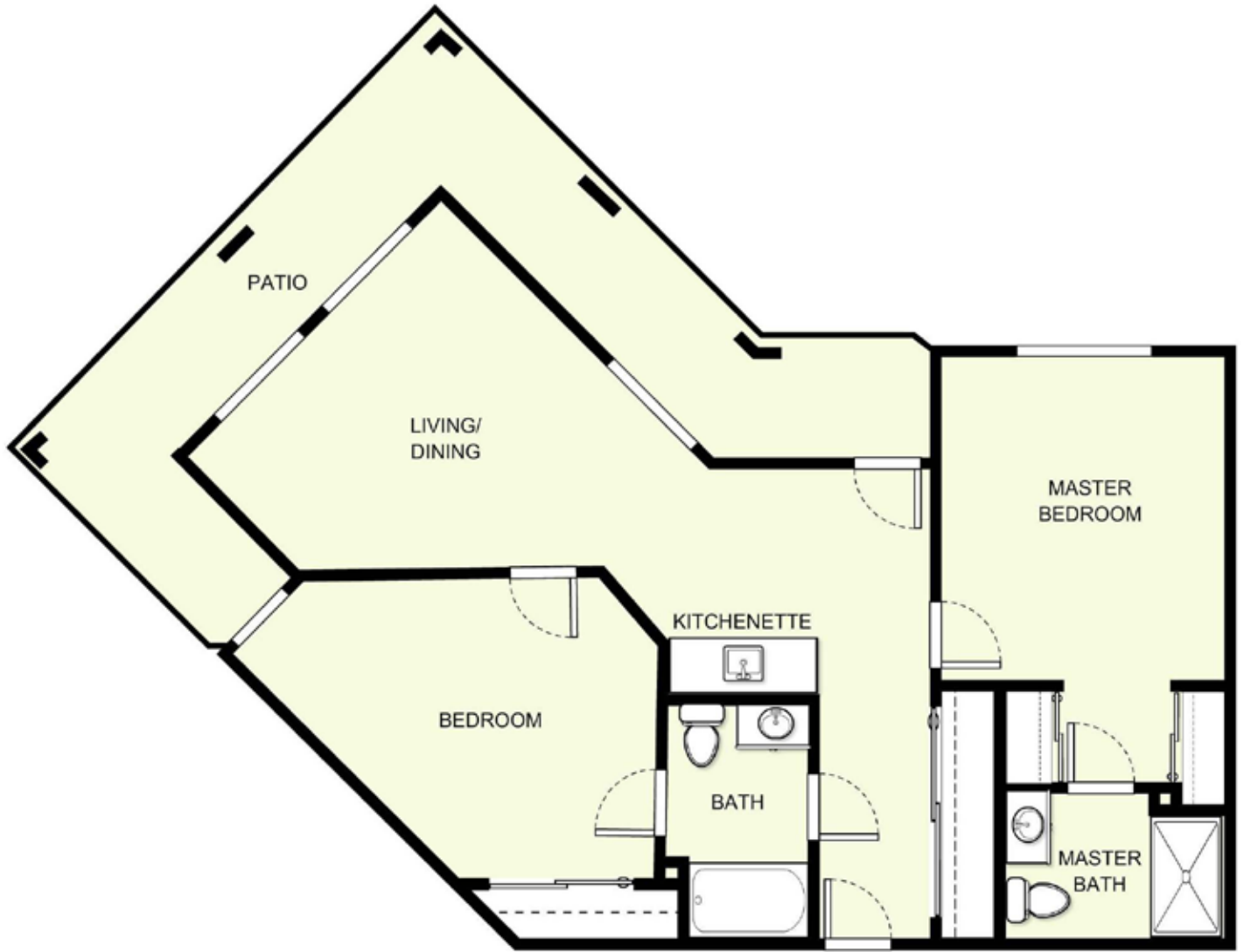
THE COURT AT RUSHDALE

Atria Retirement Canada

*Square footage and dimensions are approximations and may vary between individual apartments. Please see community management for details.

Two Bedroom C-4

971 sq. ft.*



Date _____ Name _____

Apartment No. _____ Apartment Rate _____ Expires _____

Notes _____



THE COURT AT RUSHDALE

Atria Retirement Canada

*Square footage and dimensions are approximations and may vary between individual apartments. Please see community management for details.

Two Bedroom C-5

975 sq. ft.*



Date _____ Name _____

Apartment No. _____ Apartment Rate _____ Expires _____

Notes _____



THE COURT AT RUSHDALE

Atria Retirement Canada

*Square footage and dimensions are approximations and may vary between individual apartments. Please see community management for details.

Two Bedroom C-6

937 sq. ft.*



Date _____ Name _____

Apartment No. _____ Apartment Rate _____ Expires _____

Notes _____



THE COURT AT RUSHDALE

Atria Retirement Canada

*Square footage and dimensions are approximations and may vary between individual apartments. Please see community management for details.