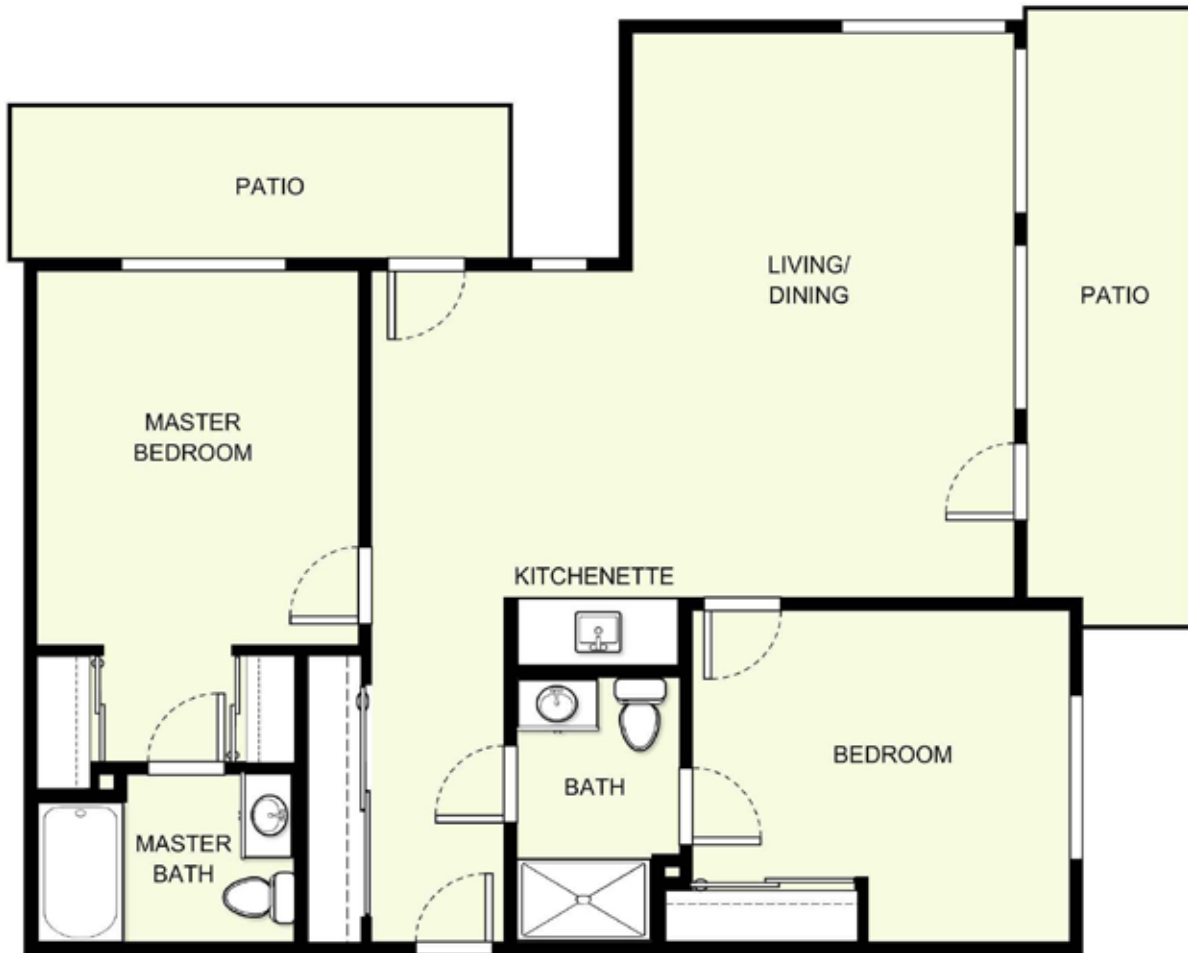


# Two Bedroom C-1

1,056 sq. ft.\*



Date \_\_\_\_\_ Name \_\_\_\_\_

Apartment No. \_\_\_\_\_ Apartment Rate \_\_\_\_\_ Expires \_\_\_\_\_

Notes \_\_\_\_\_

\_\_\_\_\_

\_\_\_\_\_

\_\_\_\_\_



**THE COURT AT BROOKLIN**

*Atria* Retirement Canada

\*Square footage and dimensions are approximations and may vary between individual apartments. Please see community management for details.

# Two Bedroom C-2

937 sq. ft.\*



Date \_\_\_\_\_ Name \_\_\_\_\_

Apartment No. \_\_\_\_\_ Apartment Rate \_\_\_\_\_ Expires \_\_\_\_\_

Notes \_\_\_\_\_

---

---

---



**THE COURT AT BROOKLIN**

*Atria* Retirement Canada

\*Square footage and dimensions are approximations and may vary between individual apartments. Please see community management for details.

# Two Bedroom C-3

877 sq. ft.\*



Date \_\_\_\_\_ Name \_\_\_\_\_

Apartment No. \_\_\_\_\_ Apartment Rate \_\_\_\_\_ Expires \_\_\_\_\_

Notes \_\_\_\_\_

\_\_\_\_\_

\_\_\_\_\_

\_\_\_\_\_



**THE COURT AT BROOKLIN**

*Atria* Retirement Canada

\*Square footage and dimensions are approximations and may vary between individual apartments. Please see community management for details.

# Two Bedroom C-4

971 sq. ft.\*



Date \_\_\_\_\_ Name \_\_\_\_\_

Apartment No. \_\_\_\_\_ Apartment Rate \_\_\_\_\_ Expires \_\_\_\_\_

Notes \_\_\_\_\_

\_\_\_\_\_  
\_\_\_\_\_  
\_\_\_\_\_



**THE COURT AT BROOKLIN**

*Atria* Retirement Canada

\*Square footage and dimensions are approximations and may vary between individual apartments. Please see community management for details.

# Two Bedroom C-5

975 sq. ft.\*



Date \_\_\_\_\_ Name \_\_\_\_\_

Apartment No. \_\_\_\_\_ Apartment Rate \_\_\_\_\_ Expires \_\_\_\_\_

Notes \_\_\_\_\_

\_\_\_\_\_

\_\_\_\_\_

\_\_\_\_\_



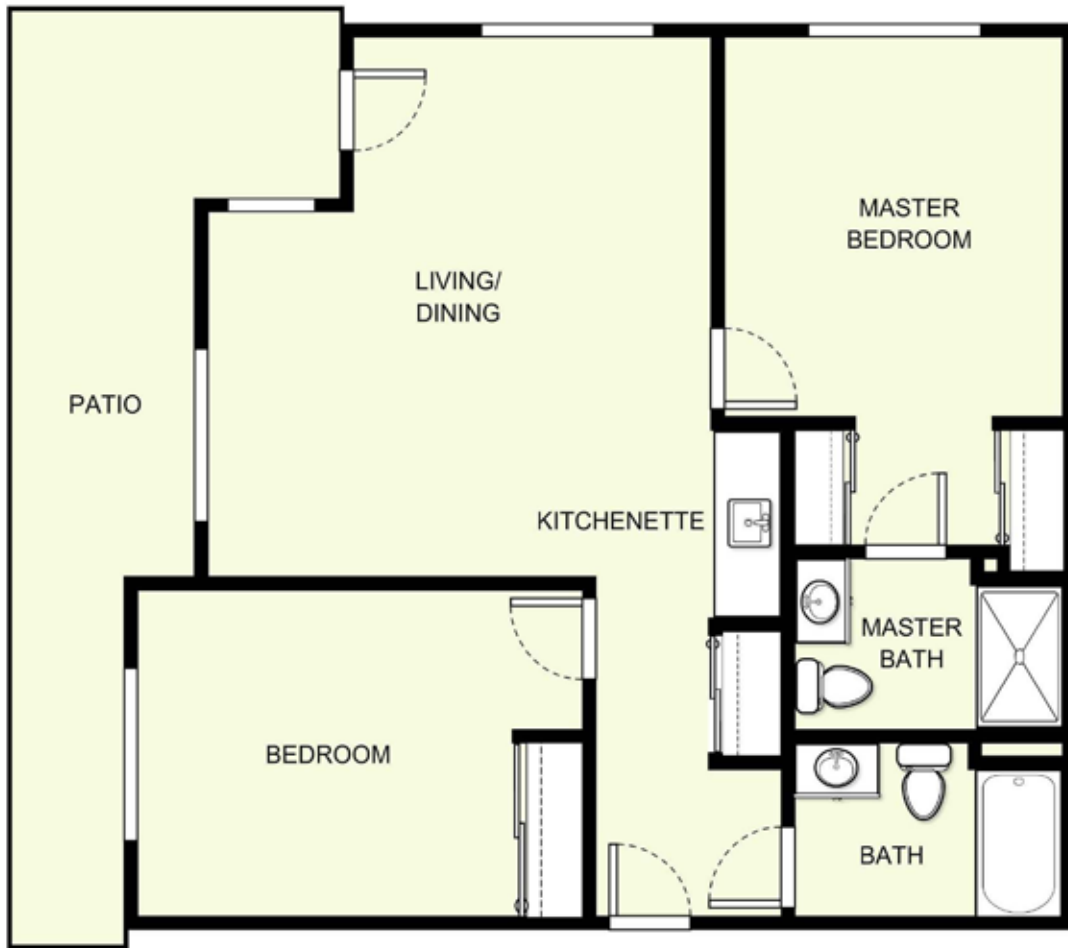
**THE COURT AT BROOKLIN**

*Atria* Retirement Canada

\*Square footage and dimensions are approximations and may vary between individual apartments. Please see community management for details.

# Two Bedroom C-6

937 sq. ft.\*



Date \_\_\_\_\_ Name \_\_\_\_\_

Apartment No. \_\_\_\_\_ Apartment Rate \_\_\_\_\_ Expires \_\_\_\_\_

Notes \_\_\_\_\_

---

---

---



**THE COURT AT BROOKLIN**

*Atria* Retirement Canada

\*Square footage and dimensions are approximations and may vary between individual apartments. Please see community management for details.

# Two Bedroom C-7

990 sq. ft.\*



Date \_\_\_\_\_ Name \_\_\_\_\_

Apartment No. \_\_\_\_\_ Apartment Rate \_\_\_\_\_ Expires \_\_\_\_\_

Notes \_\_\_\_\_

\_\_\_\_\_

\_\_\_\_\_

\_\_\_\_\_



**THE COURT AT BROOKLIN**

*Atria* Retirement Canada

\*Square footage and dimensions are approximations and may vary between individual apartments. Please see community management for details.