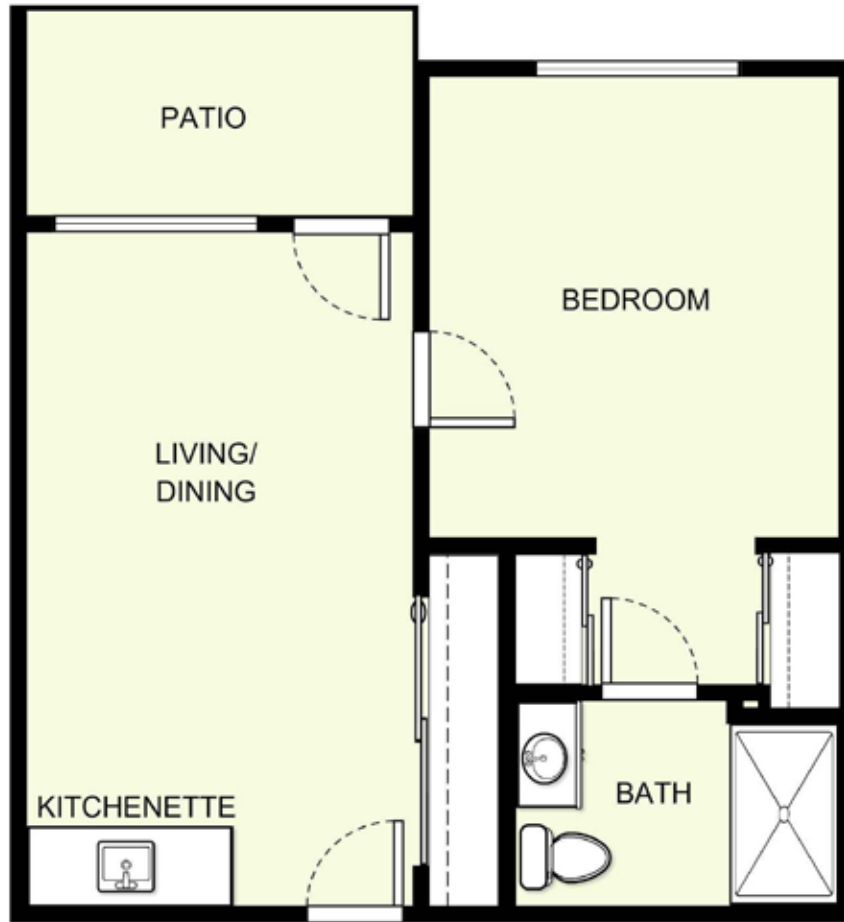


# One Bedroom B-1

549 sq. ft.\*



Date \_\_\_\_\_ Name \_\_\_\_\_

Apartment No. \_\_\_\_\_ Apartment Rate \_\_\_\_\_ Expires \_\_\_\_\_

Notes \_\_\_\_\_

\_\_\_\_\_

\_\_\_\_\_

\_\_\_\_\_



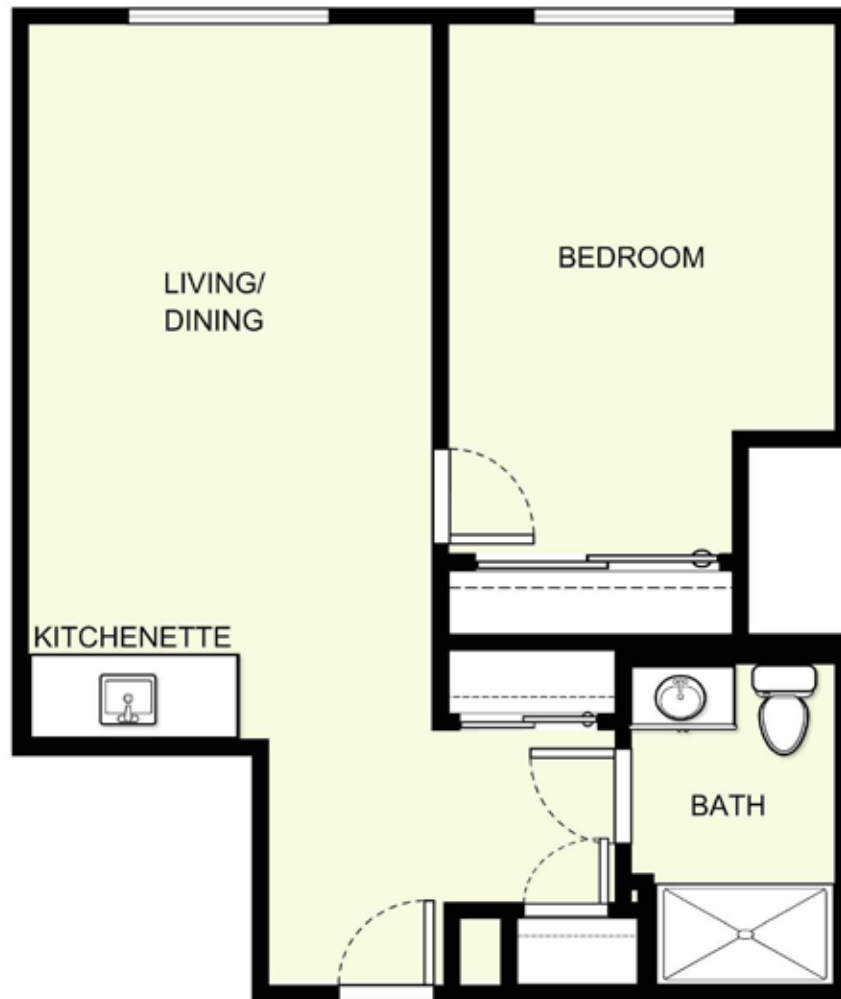
**BURLINGTON GARDENS**

*Atria* Retirement Canada

\*Square footage and dimensions are approximations and may vary between individual apartments. Please see community management for details.

# One Bedroom B-2

617 sq. ft.\*



Date \_\_\_\_\_ Name \_\_\_\_\_

Apartment No. \_\_\_\_\_ Apartment Rate \_\_\_\_\_ Expires \_\_\_\_\_

Notes \_\_\_\_\_

\_\_\_\_\_

\_\_\_\_\_

\_\_\_\_\_



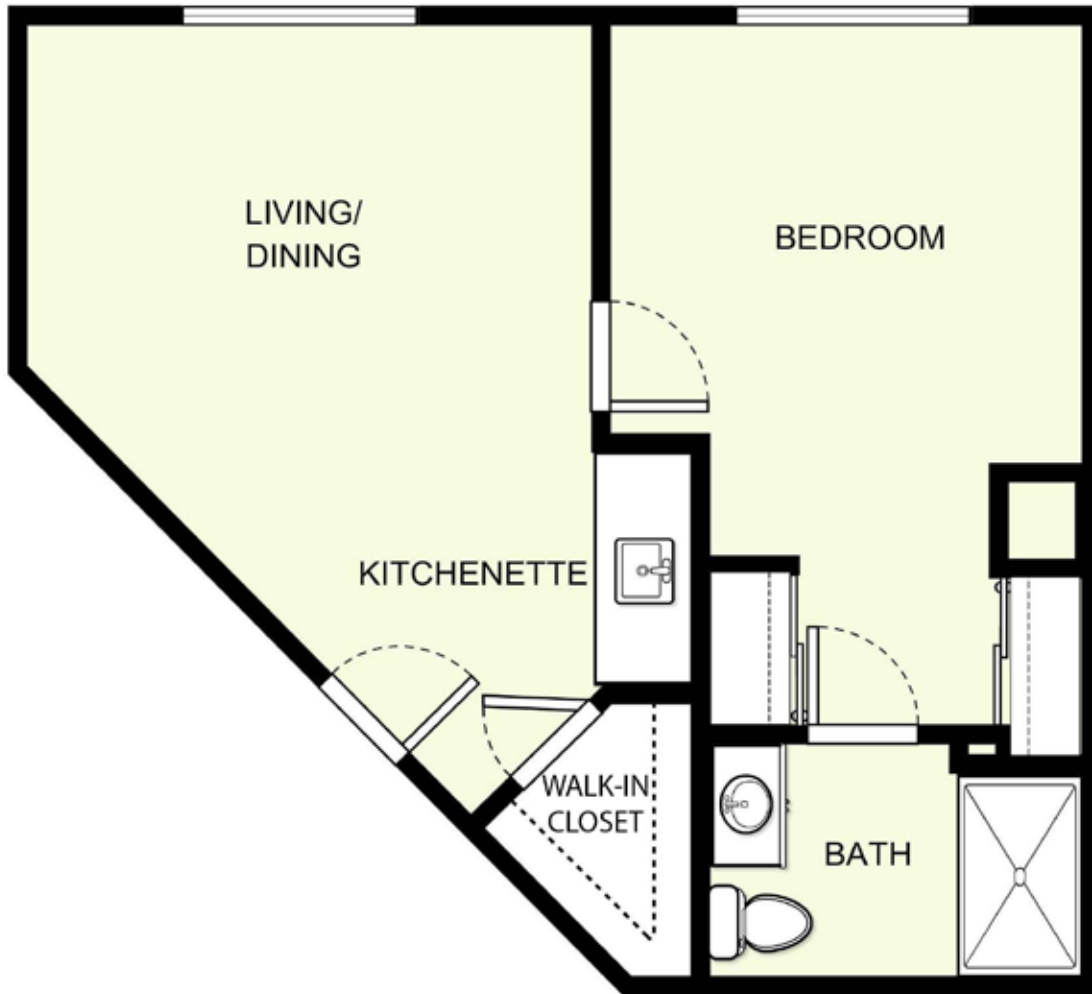
**BURLINGTON GARDENS**

*Atria* Retirement Canada

\*Square footage and dimensions are approximations and may vary between individual apartments. Please see community management for details.

# One Bedroom B-3

554 sq. ft.\*



Date \_\_\_\_\_ Name \_\_\_\_\_

Apartment No. \_\_\_\_\_ Apartment Rate \_\_\_\_\_ Expires \_\_\_\_\_

Notes \_\_\_\_\_

\_\_\_\_\_

\_\_\_\_\_

\_\_\_\_\_



**BURLINGTON GARDENS**

*Atria* Retirement Canada

\*Square footage and dimensions are approximations and may vary between individual apartments. Please see community management for details.

# One Bedroom B-4

648 sq. ft.\*



Date \_\_\_\_\_ Name \_\_\_\_\_

Apartment No. \_\_\_\_\_ Apartment Rate \_\_\_\_\_ Expires \_\_\_\_\_

Notes \_\_\_\_\_

\_\_\_\_\_

\_\_\_\_\_

\_\_\_\_\_



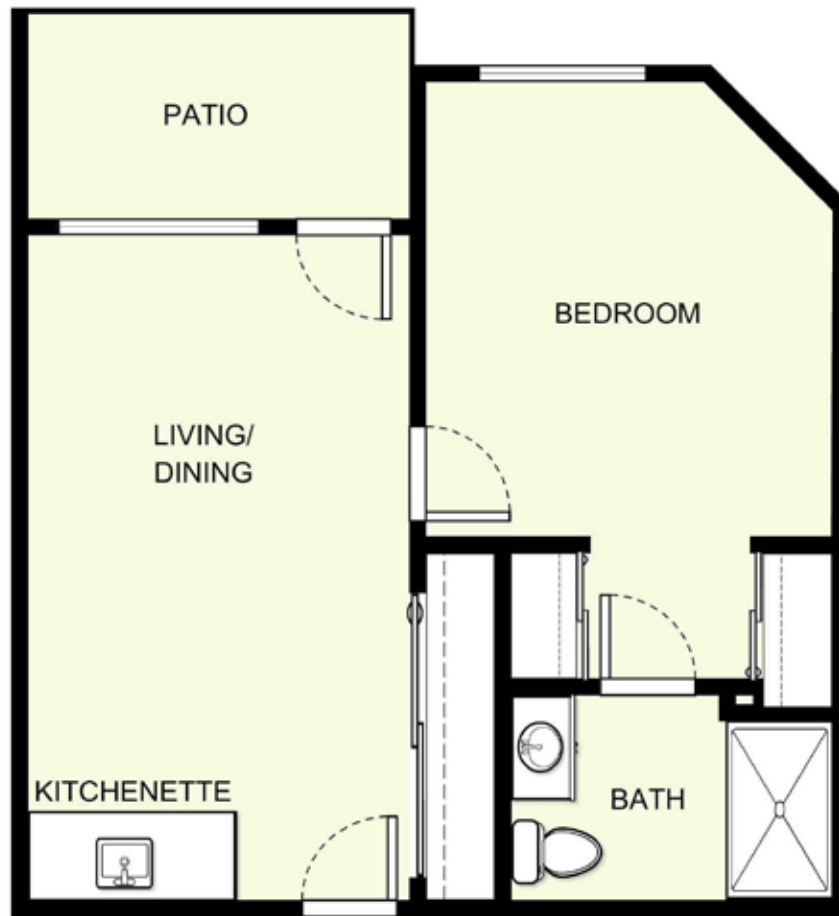
**BURLINGTON GARDENS**

*Atria* Retirement Canada

\*Square footage and dimensions are approximations and may vary between individual apartments. Please see community management for details.

# One Bedroom B-5

542 sq. ft.\*



Date \_\_\_\_\_ Name \_\_\_\_\_

Apartment No. \_\_\_\_\_ Apartment Rate \_\_\_\_\_ Expires \_\_\_\_\_

Notes \_\_\_\_\_

\_\_\_\_\_

\_\_\_\_\_

\_\_\_\_\_



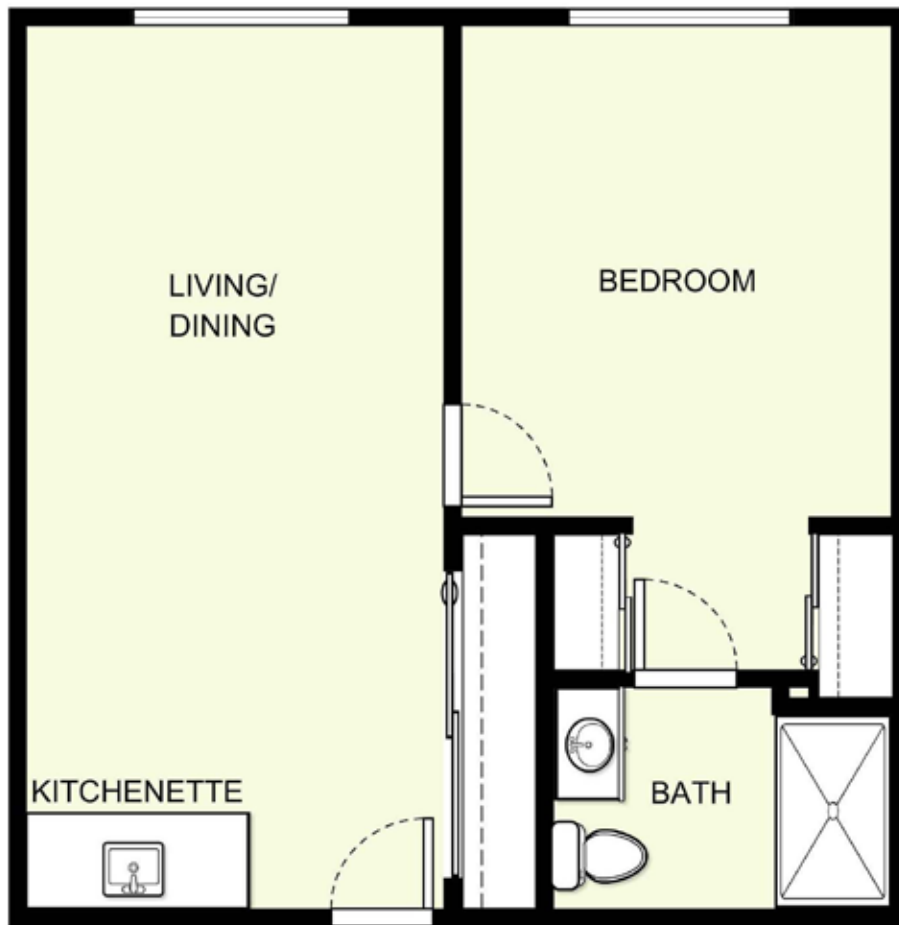
**BURLINGTON GARDENS**

*Atria* Retirement Canada

\*Square footage and dimensions are approximations and may vary between individual apartments. Please see community management for details.

# One Bedroom B-6

600 sq. ft.\*



Date \_\_\_\_\_ Name \_\_\_\_\_

Apartment No. \_\_\_\_\_ Apartment Rate \_\_\_\_\_ Expires \_\_\_\_\_

Notes \_\_\_\_\_

\_\_\_\_\_

\_\_\_\_\_

\_\_\_\_\_



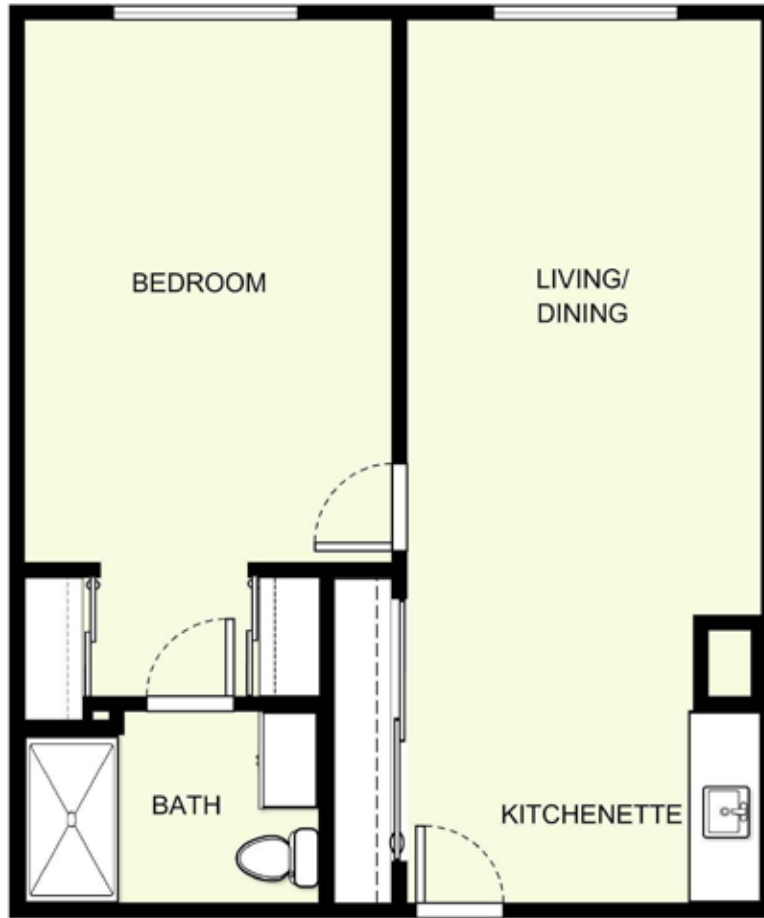
**BURLINGTON GARDENS**

*Atria* Retirement Canada

\*Square footage and dimensions are approximations and may vary between individual apartments. Please see community management for details.

# One Bedroom B-7

695 sq. ft.\*



Date \_\_\_\_\_ Name \_\_\_\_\_

Apartment No. \_\_\_\_\_ Apartment Rate \_\_\_\_\_ Expires \_\_\_\_\_

Notes \_\_\_\_\_

\_\_\_\_\_

\_\_\_\_\_

\_\_\_\_\_



**BURLINGTON GARDENS**

*Atria* Retirement Canada

\*Square footage and dimensions are approximations and may vary between individual apartments. Please see community management for details.

# One Bedroom B-8

665 sq. ft.\*



Date \_\_\_\_\_ Name \_\_\_\_\_

Apartment No. \_\_\_\_\_ Apartment Rate \_\_\_\_\_ Expires \_\_\_\_\_

Notes \_\_\_\_\_

\_\_\_\_\_

\_\_\_\_\_

\_\_\_\_\_



**BURLINGTON GARDENS**

*Atria* Retirement Canada

\*Square footage and dimensions are approximations and may vary between individual apartments. Please see community management for details.



# One Bedroom B-9

894 sq. ft.\*



Date \_\_\_\_\_ Name \_\_\_\_\_

Apartment No. \_\_\_\_\_ Apartment Rate \_\_\_\_\_ Expires \_\_\_\_\_

Notes \_\_\_\_\_

\_\_\_\_\_

\_\_\_\_\_

\_\_\_\_\_



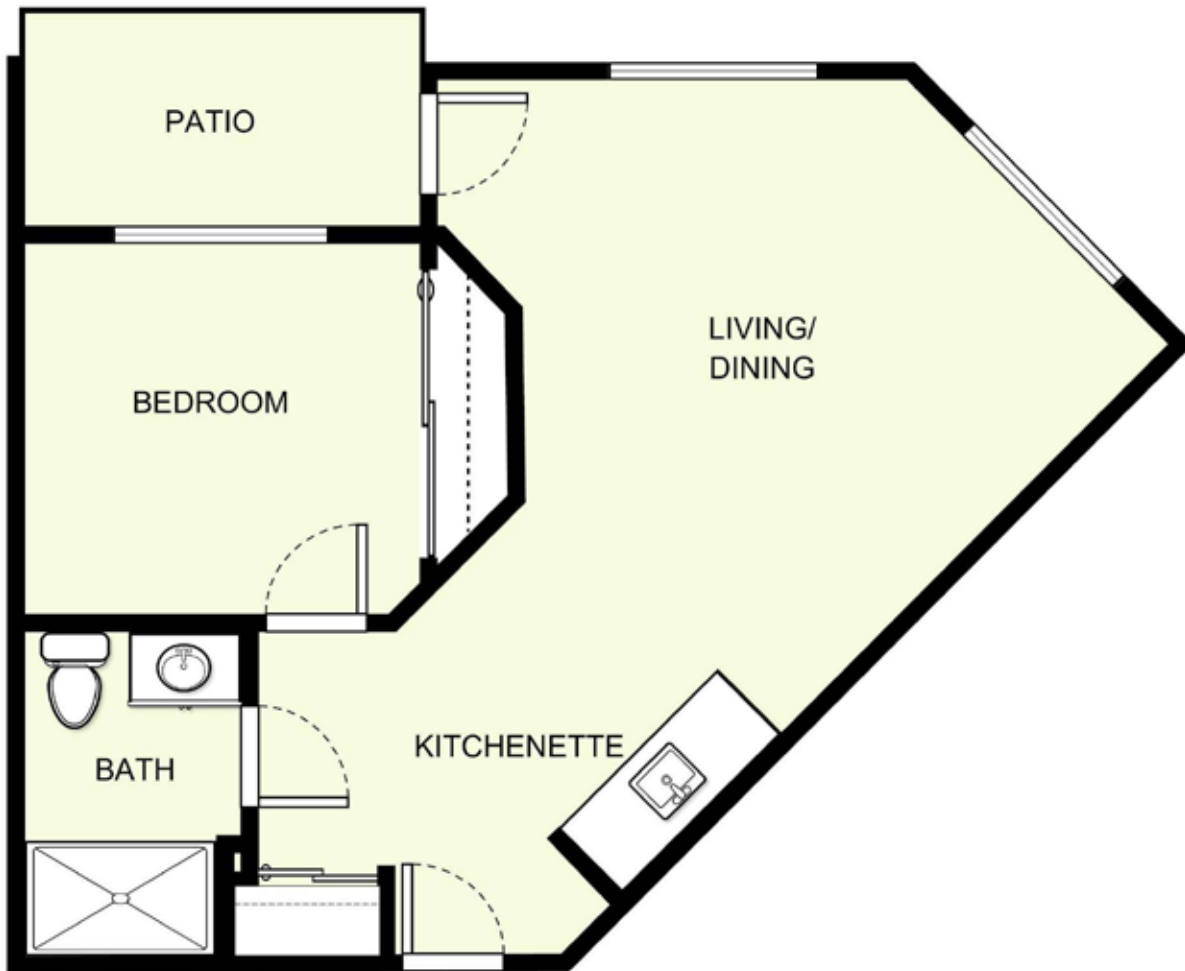
**BURLINGTON GARDENS**

*Atria* Retirement Canada

\*Square footage and dimensions are approximations and may vary between individual apartments. Please see community management for details.

# One Bedroom B-10

578 sq. ft.\*



Date \_\_\_\_\_ Name \_\_\_\_\_

Apartment No. \_\_\_\_\_ Apartment Rate \_\_\_\_\_ Expires \_\_\_\_\_

Notes \_\_\_\_\_

\_\_\_\_\_

\_\_\_\_\_

\_\_\_\_\_



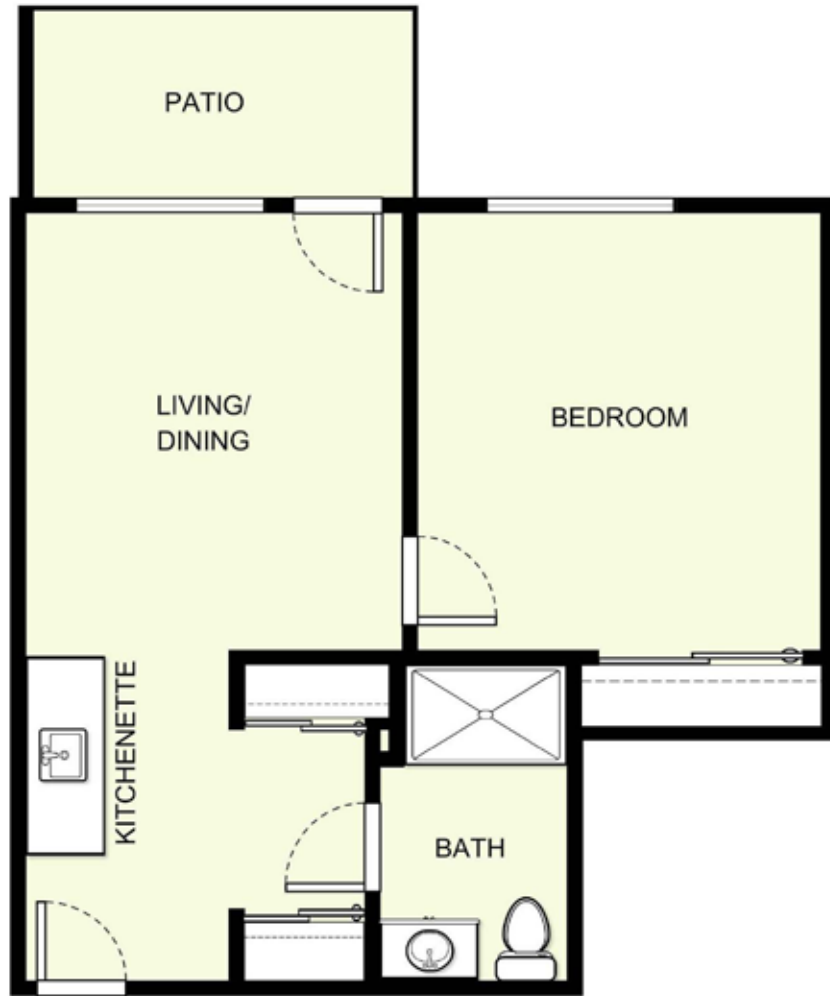
**BURLINGTON GARDENS**

*Atria* Retirement Canada

\*Square footage and dimensions are approximations and may vary between individual apartments. Please see community management for details.

# One Bedroom B-11

569 sq. ft.\*



Date \_\_\_\_\_ Name \_\_\_\_\_

Apartment No. \_\_\_\_\_ Apartment Rate \_\_\_\_\_ Expires \_\_\_\_\_

Notes \_\_\_\_\_

\_\_\_\_\_

\_\_\_\_\_

\_\_\_\_\_



**BURLINGTON GARDENS**

*Atria* Retirement Canada

\*Square footage and dimensions are approximations and may vary between individual apartments. Please see community management for details.

# One Bedroom B-12

658 sq. ft.\*



Date \_\_\_\_\_ Name \_\_\_\_\_

Apartment No. \_\_\_\_\_ Apartment Rate \_\_\_\_\_ Expires \_\_\_\_\_

Notes \_\_\_\_\_

\_\_\_\_\_

\_\_\_\_\_

\_\_\_\_\_



**BURLINGTON GARDENS**

*Atria* Retirement Canada

\*Square footage and dimensions are approximations and may vary between individual apartments. Please see community management for details.

# One Bedroom B-13

600 sq. ft.\*



Date \_\_\_\_\_ Name \_\_\_\_\_

Apartment No. \_\_\_\_\_ Apartment Rate \_\_\_\_\_ Expires \_\_\_\_\_

Notes \_\_\_\_\_

\_\_\_\_\_

\_\_\_\_\_

\_\_\_\_\_



**BURLINGTON GARDENS**

*Atria* Retirement Canada

\*Square footage and dimensions are approximations and may vary between individual apartments. Please see community management for details.