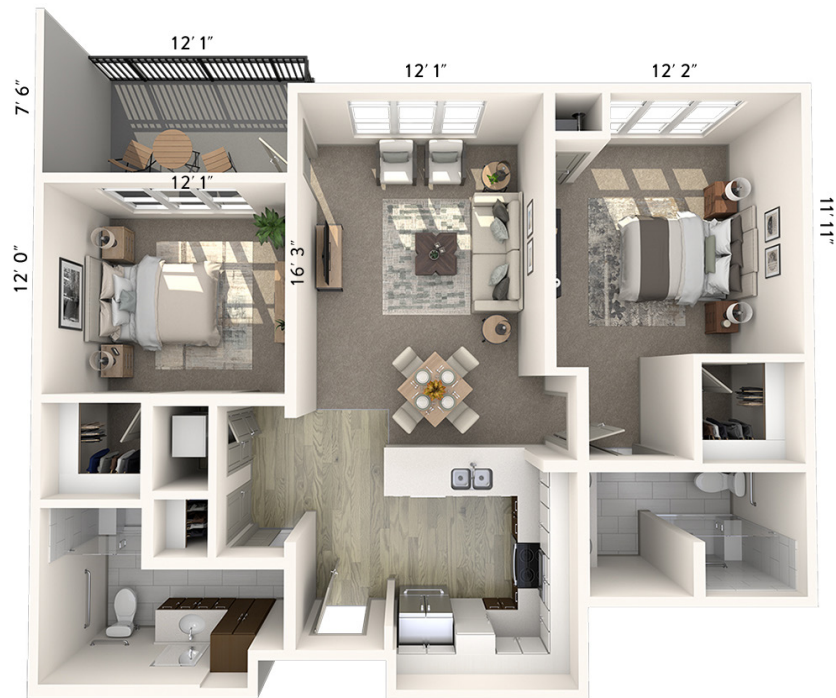


Two Bedroom C



Apartment No. _____ Square Footage _____ Apartment Rate _____

Notes _____

Date Quoted _____ Quoted by _____ Rate Expires _____

Atria CARY

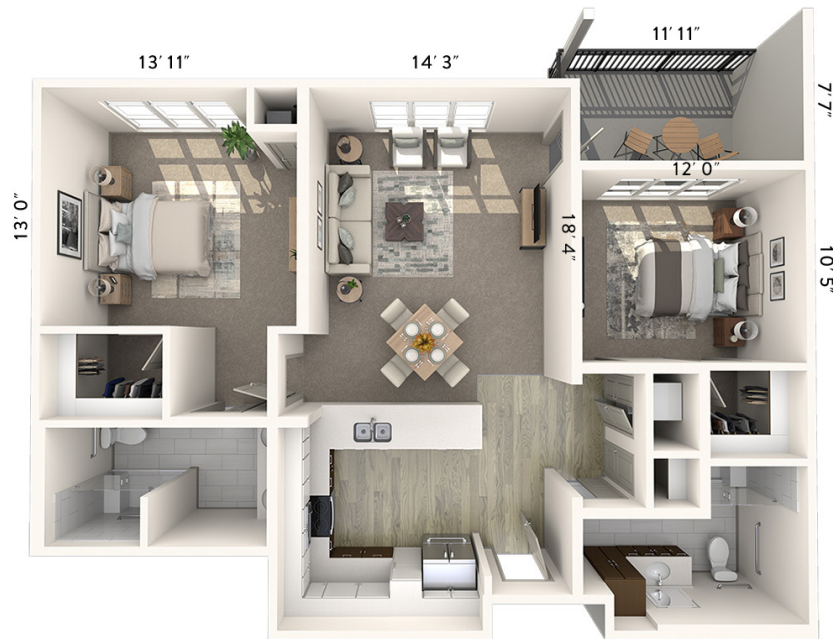
919.342.8200 | AtriaCary.com

Measurements are an approximation and can vary by apartment.
All rates are subject to change.

Rental Rate includes

- 24-hour staff
- Chef-prepared meals
- Daily educational, social, cultural and fitness opportunities
- Scheduled bus and sedan transportation
- Wi-Fi in all common areas
- In-apartment washer and dryer - all apartments
- Laundry service
- Weekly housekeeping and linen services
- Apartment maintenance
- Cable TV

Two Bedroom C.1



Apartment No. _____ Square Footage _____ Apartment Rate _____


Notes _____

Date Quoted _____ Quoted by _____ Rate Expires _____

Atria CARY

919.342.8200 | AtriaCary.com

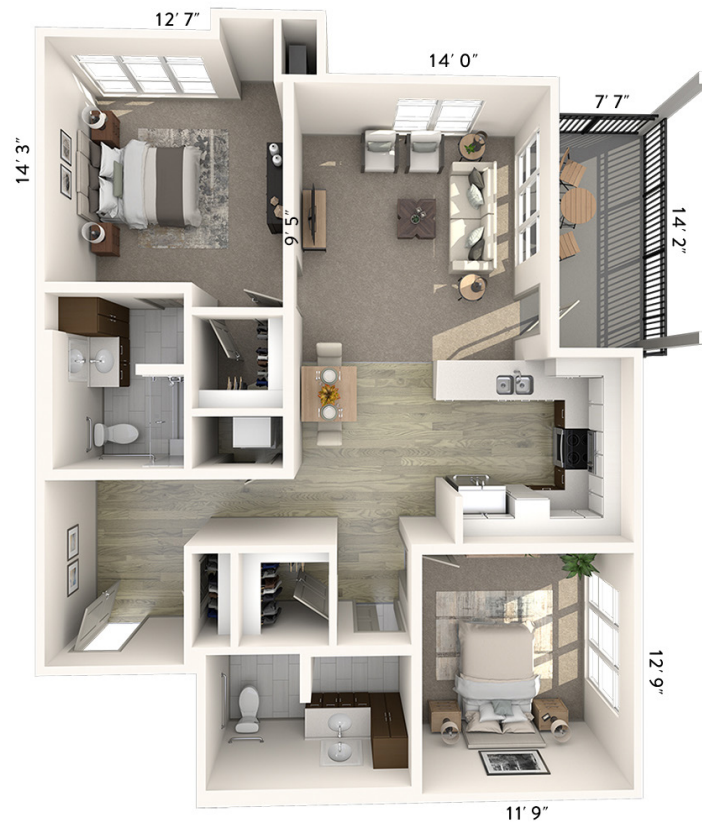
Measurements are an approximation and can vary by apartment.
All rates are subject to change.

267008 

Rental Rate includes

- 24-hour staff
- Chef-prepared meals
- Daily educational, social, cultural and fitness opportunities
- Scheduled bus and sedan transportation
- Wi-Fi in all common areas
- In-apartment washer and dryer - all apartments
- Laundry service
- Weekly housekeeping and linen services
- Apartment maintenance
- Cable TV

Two Bedroom C.2



Apartment No. _____ Square Footage _____ Apartment Rate _____

Notes _____

Date Quoted _____ Quoted by _____ Rate Expires _____

Atria CARY

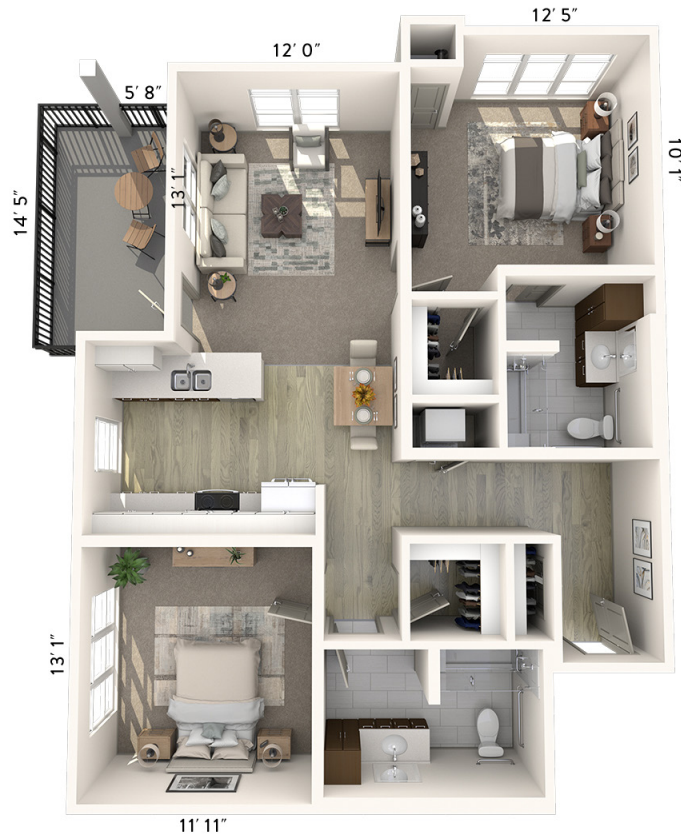
919.342.8200 | AtriaCary.com

Measurements are an approximation and can vary by apartment.
All rates are subject to change.

Rental Rate includes

- 24-hour staff
- Chef-prepared meals
- Daily educational, social, cultural and fitness opportunities
- Scheduled bus and sedan transportation
- Wi-Fi in all common areas
- In-apartment washer and dryer - all apartments
- Laundry service
- Weekly housekeeping and linen services
- Apartment maintenance
- Cable TV

Two Bedroom C.3



Apartment No. _____ Square Footage _____ Apartment Rate _____

Notes _____

Date Quoted _____ Quoted by _____ Rate Expires _____

Atria CARY

919.342.8200 | AtriaCary.com

Measurements are an approximation and can vary by apartment.
All rates are subject to change.

Rental Rate includes

- 24-hour staff
- Chef-prepared meals
- Daily educational, social, cultural and fitness opportunities
- Scheduled bus and sedan transportation
- Wi-Fi in all common areas
- In-apartment washer and dryer - all apartments
- Laundry service
- Weekly housekeeping and linen services
- Apartment maintenance
- Cable TV

Two Bedroom C.4



Apartment No. _____ Square Footage _____ Apartment Rate _____

Notes _____

Date Quoted _____ Quoted by _____ Rate Expires _____

Atria CARY

919.342.8200 | AtriaCary.com

Measurements are an approximation and can vary by apartment.
All rates are subject to change.

Rental Rate includes

- 24-hour staff
- Chef-prepared meals
- Daily educational, social, cultural and fitness opportunities
- Scheduled bus and sedan transportation
- Wi-Fi in all common areas
- In-apartment washer and dryer - all apartments
- Laundry service
- Weekly housekeeping and linen services
- Apartment maintenance
- Cable TV

Two Bedroom C.5



Apartment No. _____ Square Footage _____ Apartment Rate _____

Notes _____

Date Quoted _____ Quoted by _____ Rate Expires _____

Atria CARY

919.342.8200 | AtriaCary.com

Measurements are an approximation and can vary by apartment.
All rates are subject to change.

Rental Rate includes

- 24-hour staff
- Chef-prepared meals
- Daily educational, social, cultural and fitness opportunities
- Scheduled bus and sedan transportation
- Wi-Fi in all common areas
- In-apartment washer and dryer - all apartments
- Laundry service
- Weekly housekeeping and linen services
- Apartment maintenance
- Cable TV

Two Bedroom - Accessible C.6



Apartment No. _____ Square Footage _____ Apartment Rate _____

Notes _____

Date Quoted _____ Quoted by _____ Rate Expires _____

Atria CARY

919.342.8200 | AtriaCary.com

Measurements are an approximation and can vary by apartment.
All rates are subject to change.

Rental Rate includes

- 24-hour staff
- Chef-prepared meals
- Daily educational, social, cultural and fitness opportunities
- Scheduled bus and sedan transportation
- Wi-Fi in all common areas
- In-apartment washer and dryer - all apartments
- Laundry service
- Weekly housekeeping and linen services
- Apartment maintenance
- Cable TV