

One Bedroom A



Apartment No. _____ Square Footage _____ Apartment Rate _____

Notes _____

Date Quoted _____ Quoted by _____ Rate Expires _____

Atria CARY

919.342.8200 | AtriaCary.com

Measurements are an approximation and can vary by apartment.
All rates are subject to change.

Rental Rate includes

- 24-hour staff
- Chef-prepared meals
- Daily educational, social, cultural and fitness opportunities
- Scheduled bus and sedan transportation
- Wi-Fi in all common areas
- In-apartment washer and dryer - all apartments
- Laundry service
- Weekly housekeeping and linen services
- Apartment maintenance
- Cable TV

One Bedroom Deluxe B.4



Apartment No. _____ Square Footage _____ Apartment Rate _____

Notes _____

Date Quoted _____ Quoted by _____ Rate Expires _____

Atria CARY

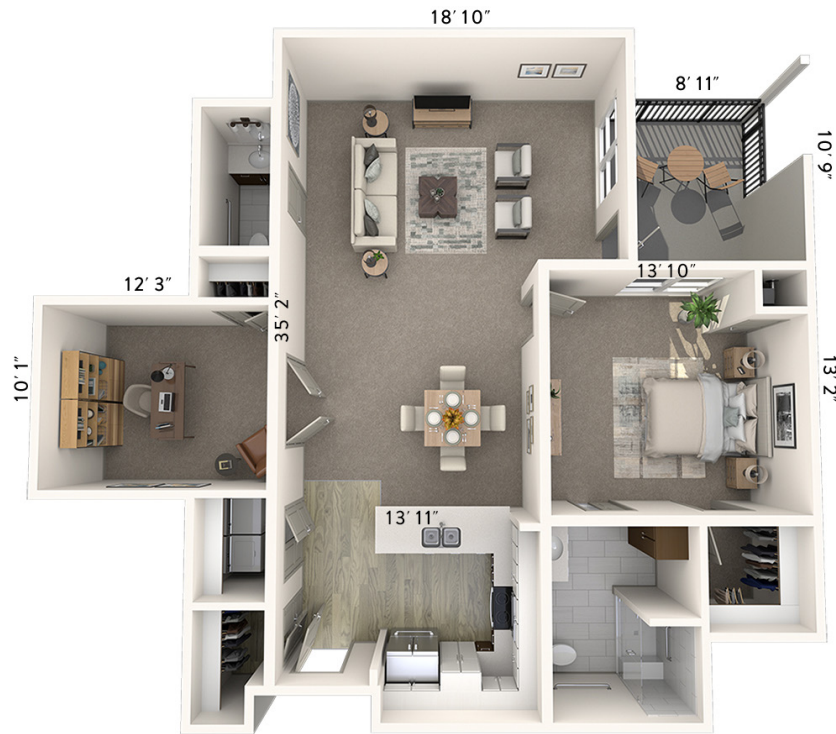
919.342.8200 | AtriaCary.com

Measurements are an approximation and can vary by apartment.
All rates are subject to change.

Rental Rate includes

- 24-hour staff
- Chef-prepared meals
- Daily educational, social, cultural and fitness opportunities
- Scheduled bus and sedan transportation
- Wi-Fi in all common areas
- In-apartment washer and dryer - all apartments
- Laundry service
- Weekly housekeeping and linen services
- Apartment maintenance
- Cable TV

One Bedroom Deluxe B.5



Apartment No. _____ Square Footage _____ Apartment Rate _____

Notes _____

Date Quoted _____ Quoted by _____ Rate Expires _____

Atria CARY

919.342.8200 | AtriaCary.com

Measurements are an approximation and can vary by apartment.
All rates are subject to change.

Rental Rate includes

- 24-hour staff
- Chef-prepared meals
- Daily educational, social, cultural and fitness opportunities
- Scheduled bus and sedan transportation
- Wi-Fi in all common areas
- In-apartment washer and dryer - all apartments
- Laundry service
- Weekly housekeeping and linen services
- Apartment maintenance
- Cable TV

One Bedroom Deluxe B.6



Apartment No. _____ Square Footage _____ Apartment Rate _____

Notes _____

Date Quoted _____ Quoted by _____ Rate Expires _____

Atria CARY

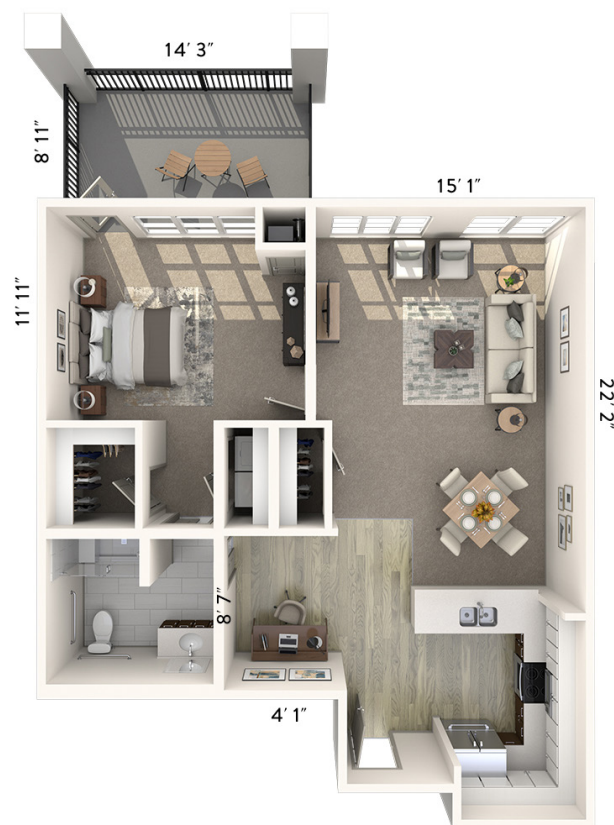
919.342.8200 | AtriaCary.com

Measurements are an approximation and can vary by apartment.
All rates are subject to change.

Rental Rate includes

- 24-hour staff
- Chef-prepared meals
- Daily educational, social, cultural and fitness opportunities
- Scheduled bus and sedan transportation
- Wi-Fi in all common areas
- In-apartment washer and dryer - all apartments
- Laundry service
- Weekly housekeeping and linen services
- Apartment maintenance
- Cable TV

One Bedroom Deluxe B.7



Apartment No. _____ Square Footage _____ Apartment Rate _____

Notes _____

Date Quoted _____ Quoted by _____ Rate Expires _____



919.342.8200 | AtriaCary.com

Measurements are an approximation and can vary by apartment.
All rates are subject to change.

Rental Rate includes

- 24-hour staff
- Chef-prepared meals
- Daily educational, social, cultural and fitness opportunities
- Scheduled bus and sedan transportation
- Wi-Fi in all common areas
- In-apartment washer and dryer - all apartments
- Laundry service
- Weekly housekeeping and linen services
- Apartment maintenance
- Cable TV

One Bedroom A.2



Apartment No. _____ Square Footage _____ Apartment Rate _____

Notes _____

Date Quoted _____ Quoted by _____ Rate Expires _____



919.342.8200 | AtriaCary.com

Measurements are an approximation and can vary by apartment.
All rates are subject to change.

Rental Rate includes

- 24-hour staff
- Chef-prepared meals
- Daily educational, social, cultural and fitness opportunities
- Scheduled bus and sedan transportation
- Wi-Fi in all common areas
- In-apartment washer and dryer - all apartments
- Laundry service
- Weekly housekeeping and linen services
- Apartment maintenance
- Cable TV

One Bedroom A.1



Apartment No. _____ Square Footage _____ Apartment Rate _____

Notes _____

Date Quoted _____ Quoted by _____ Rate Expires _____

Atria CARY

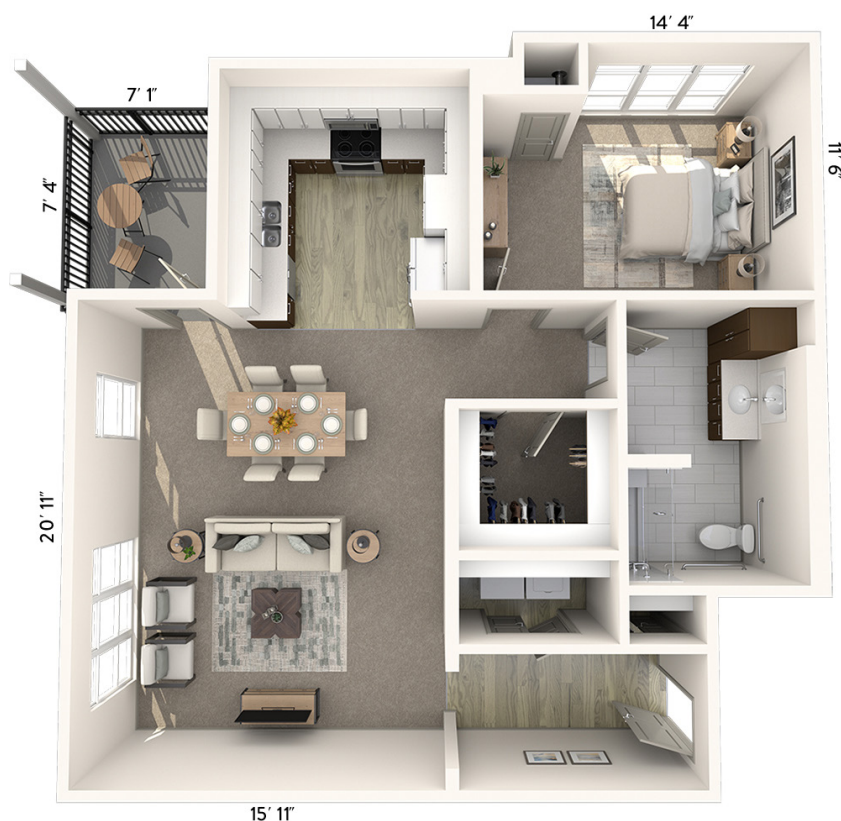
919.342.8200 | AtriaCary.com

Measurements are an approximation and can vary by apartment.
All rates are subject to change.

Rental Rate includes

- 24-hour staff
- Chef-prepared meals
- Daily educational, social, cultural and fitness opportunities
- Scheduled bus and sedan transportation
- Wi-Fi in all common areas
- In-apartment washer and dryer - all apartments
- Laundry service
- Weekly housekeeping and linen services
- Apartment maintenance
- Cable TV

One Bedroom - Accessible A.3



Apartment No. _____ Square Footage _____ Apartment Rate _____

Notes _____

Date Quoted _____ Quoted by _____ Rate Expires _____

Atria CARY

919.342.8200 | AtriaCary.com

Measurements are an approximation and can vary by apartment.
All rates are subject to change.

Rental Rate includes

- 24-hour staff
- Chef-prepared meals
- Daily educational, social, cultural and fitness opportunities
- Scheduled bus and sedan transportation
- Wi-Fi in all common areas
- In-apartment washer and dryer - all apartments
- Laundry service
- Weekly housekeeping and linen services
- Apartment maintenance
- Cable TV

One Bedroom Deluxe A.4



Apartment No. _____ Square Footage _____ Apartment Rate _____

Notes _____

Date Quoted _____ Quoted by _____ Rate Expires _____

Atria CARY

919.342.8200 | AtriaCary.com

Measurements are an approximation and can vary by apartment.
All rates are subject to change.

Rental Rate includes

- 24-hour staff
- Chef-prepared meals
- Daily educational, social, cultural and fitness opportunities
- Scheduled bus and sedan transportation
- Wi-Fi in all common areas
- In-apartment washer and dryer - all apartments
- Laundry service
- Weekly housekeeping and linen services
- Apartment maintenance
- Cable TV

One Bedroom Deluxe B



Apartment No. _____ Square Footage _____ Apartment Rate _____

Notes _____

Date Quoted _____ Quoted by _____ Rate Expires _____

Atria CARY
 919.342.8200 | AtriaCary.com

Measurements are an approximation and can vary by apartment.
 All rates are subject to change.

Rental Rate includes

- 24-hour staff
- Chef-prepared meals
- Daily educational, social, cultural and fitness opportunities
- Scheduled bus and sedan transportation
- Wi-Fi in all common areas
- In-apartment washer and dryer - all apartments
- Laundry service
- Weekly housekeeping and linen services
- Apartment maintenance
- Cable TV

One Bedroom Deluxe B.1



Apartment No. _____ Square Footage _____ Apartment Rate _____

Notes _____

Date Quoted _____ Quoted by _____ Rate Expires _____

Atria CARY

919.342.8200 | AtriaCary.com

Measurements are an approximation and can vary by apartment.
All rates are subject to change.

Rental Rate includes

- 24-hour staff
- Chef-prepared meals
- Daily educational, social, cultural and fitness opportunities
- Scheduled bus and sedan transportation
- Wi-Fi in all common areas
- In-apartment washer and dryer - all apartments
- Laundry service
- Weekly housekeeping and linen services
- Apartment maintenance
- Cable TV

One Bedroom Deluxe B.2



Apartment No. _____ Square Footage _____ Apartment Rate _____

Notes _____

Date Quoted _____ Quoted by _____ Rate Expires _____

Atria CARY

919.342.8200 | AtriaCary.com

Measurements are an approximation and can vary by apartment.
All rates are subject to change.

Rental Rate includes

- 24-hour staff
- Chef-prepared meals
- Daily educational, social, cultural and fitness opportunities
- Scheduled bus and sedan transportation
- Wi-Fi in all common areas
- In-apartment washer and dryer - all apartments
- Laundry service
- Weekly housekeeping and linen services
- Apartment maintenance
- Cable TV

One Bedroom Deluxe B.3



Apartment No. _____ Square Footage _____ Apartment Rate _____

Notes _____

Date Quoted _____ Quoted by _____ Rate Expires _____

Atria CARY

919.342.8200 | AtriaCary.com

Measurements are an approximation and can vary by apartment.
All rates are subject to change.

Rental Rate includes

- 24-hour staff
- Chef-prepared meals
- Daily educational, social, cultural and fitness opportunities
- Scheduled bus and sedan transportation
- Wi-Fi in all common areas
- In-apartment washer and dryer - all apartments
- Laundry service
- Weekly housekeeping and linen services
- Apartment maintenance
- Cable TV