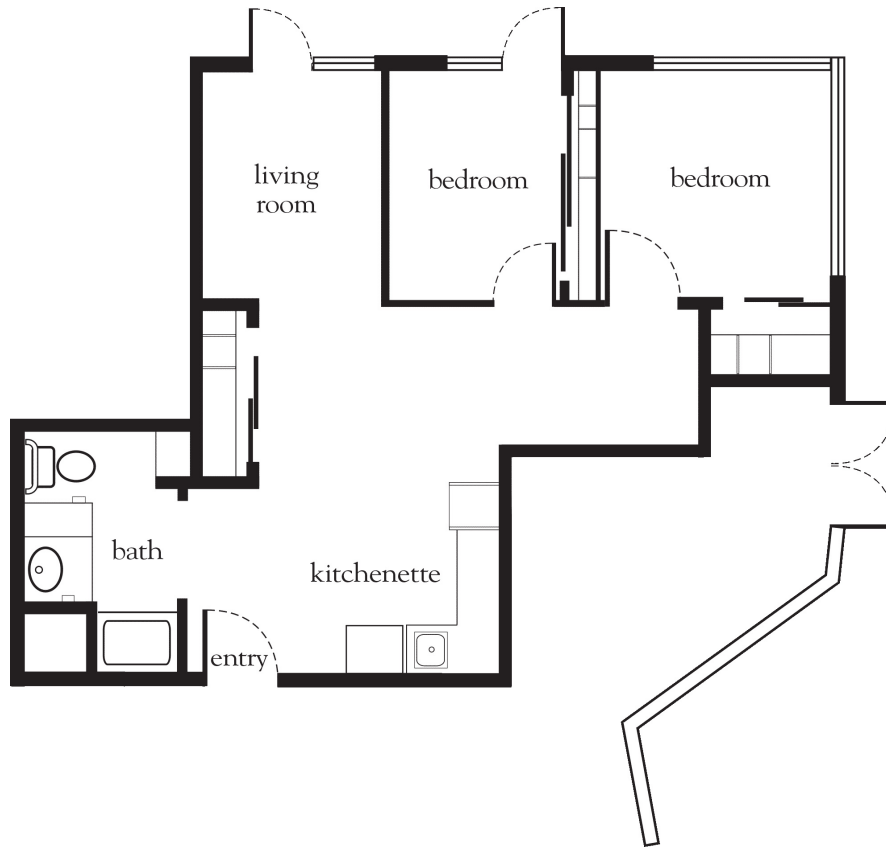


Two Bedroom



Apartment No. _____ Square Footage _____ Apartment Rate _____

Notes _____

Date Quoted _____ Quoted by _____ Rate Expires _____

Atria VALLEY VIEW

925.937.7300 | AtriaValleyView.com

Measurements are an approximation and can vary by apartment.
All rates are subject to change.
License #075600353

Rental Rate includes

- 24-hour staff
- Three chef-prepared meals per day
- Daily educational, social, cultural and fitness opportunities
- Housekeeping and linen services
- Scheduled bus and sedan transportation
- Utilities
- Wi-Fi in all common areas
- Apartment maintenance
- Cable TV
- Concierge service