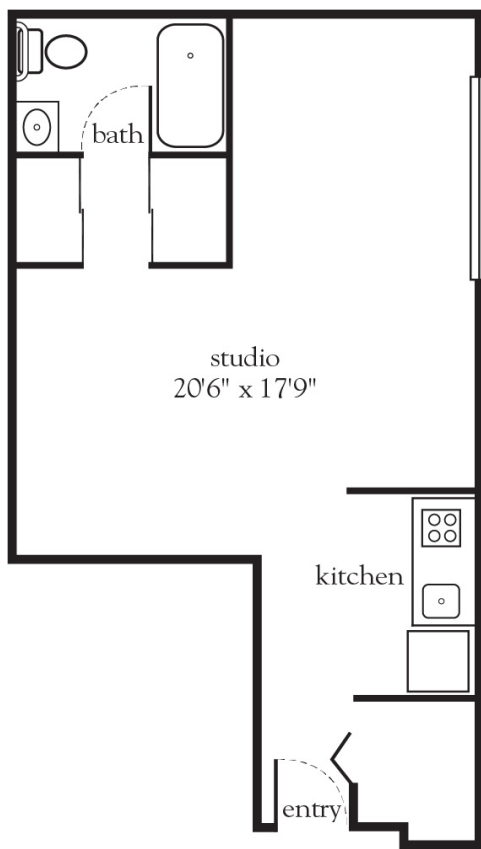


# Studio



## Assisted Living

### Rental Rate includes

- 24-hour staff
- Three chef-prepared meals per day
- Daily educational, social, cultural and fitness opportunities
- Housekeeping and linen services
- Scheduled bus and sedan transportation
- Utilities
- Wi-Fi in all common areas
- Apartment maintenance
- On-site covered parking for residents and guests

Apartment No. \_\_\_\_\_ Square Footage \_\_\_\_\_ Apartment Rate \_\_\_\_\_

Notes \_\_\_\_\_

\_\_\_\_\_

\_\_\_\_\_

\_\_\_\_\_

Date Quoted \_\_\_\_\_ Quoted by \_\_\_\_\_ Rate Expires \_\_\_\_\_

*Atria* KINGHAVEN

734.479.5900 | AtriaKinghaven.com

Measurements are an approximation and can vary by apartment.  
All rates are subject to change.