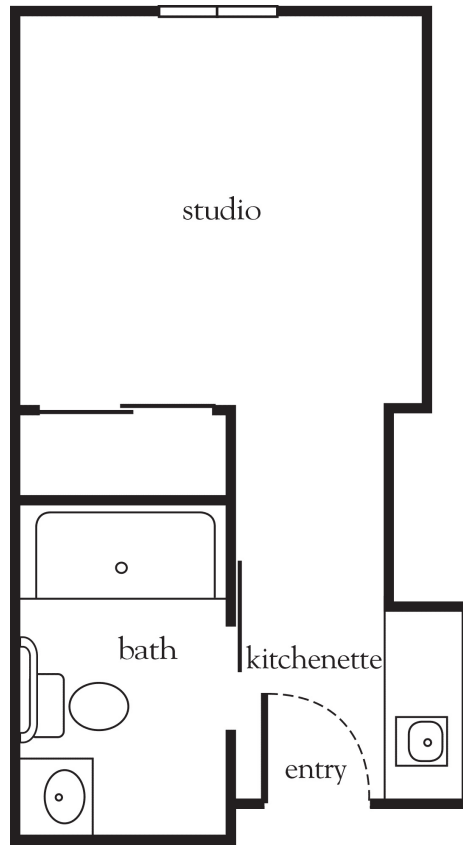


# Studio A



Apartment No. \_\_\_\_\_ Square Footage \_\_\_\_\_ Apartment Rate \_\_\_\_\_

Notes \_\_\_\_\_

\_\_\_\_\_

\_\_\_\_\_

\_\_\_\_\_

\_\_\_\_\_

Date Quoted \_\_\_\_\_ Quoted by \_\_\_\_\_ Rate Expires \_\_\_\_\_

*Atria Park* OF SAN MATEO

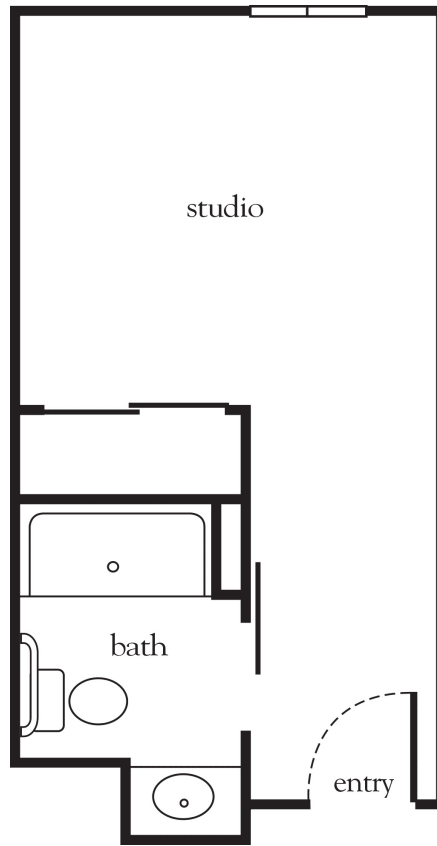
650.378.3000 | AtriaSanMateo.com

Measurements are an approximation and can vary by apartment.  
All rates are subject to change.  
License #415600133

## Rental Rate includes

- 24-hour staff
- Three chef-prepared meals per day
- Daily educational, social, cultural and fitness opportunities
- Housekeeping and linen services
- Scheduled bus and sedan transportation
- Utilities
- Wi-Fi in all common areas
- Apartment maintenance
- Cable TV
- On-site parking lot for residents and guests

# Studio B



Apartment No. \_\_\_\_\_ Square Footage \_\_\_\_\_ Apartment Rate \_\_\_\_\_

Notes \_\_\_\_\_

\_\_\_\_\_

\_\_\_\_\_

\_\_\_\_\_

\_\_\_\_\_

Date Quoted \_\_\_\_\_ Quoted by \_\_\_\_\_ Rate Expires \_\_\_\_\_

*Atria Park* OF SAN MATEO

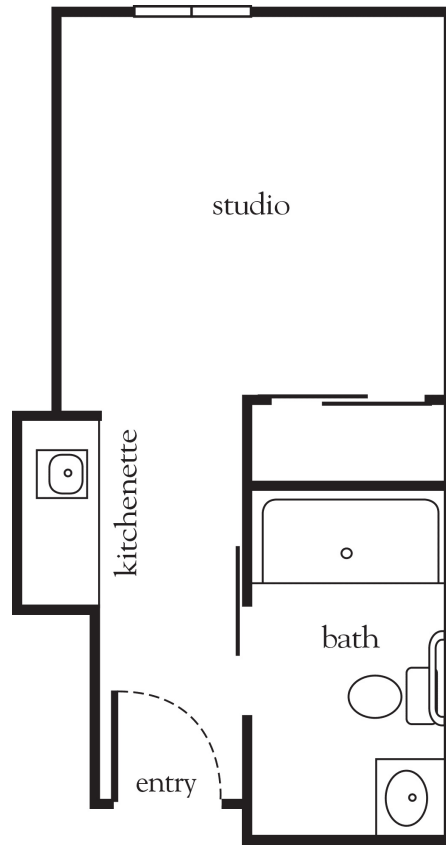
650.378.3000 | AtriaSanMateo.com

Measurements are an approximation and can vary by apartment.  
All rates are subject to change.  
License #415600133

## Rental Rate includes

- 24-hour staff
- Three chef-prepared meals per day
- Daily educational, social, cultural and fitness opportunities
- Housekeeping and linen services
- Scheduled bus and sedan transportation
- Utilities
- Wi-Fi in all common areas
- Apartment maintenance
- Cable TV
- On-site parking lot for residents and guests

# Studio C



Apartment No. \_\_\_\_\_ Square Footage \_\_\_\_\_ Apartment Rate \_\_\_\_\_

Notes \_\_\_\_\_

\_\_\_\_\_

\_\_\_\_\_

\_\_\_\_\_

\_\_\_\_\_

Date Quoted \_\_\_\_\_ Quoted by \_\_\_\_\_ Rate Expires \_\_\_\_\_

*Atria Park* OF SAN MATEO

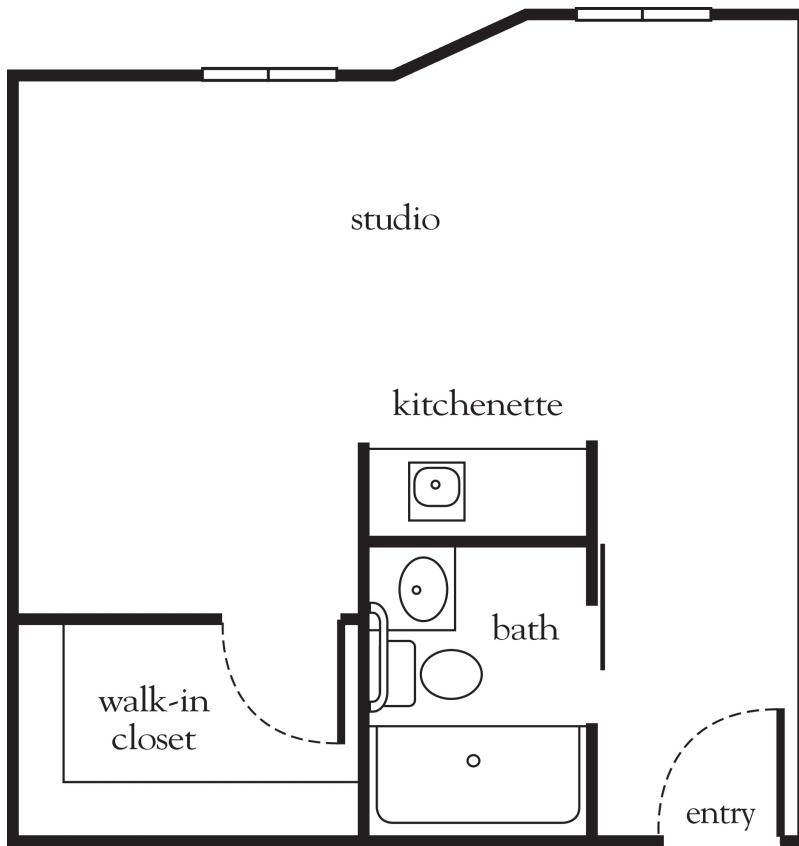
650.378.3000 | AtriaSanMateo.com

Measurements are an approximation and can vary by apartment.  
All rates are subject to change.  
License #415600133

## Rental Rate includes

- 24-hour staff
- Three chef-prepared meals per day
- Daily educational, social, cultural and fitness opportunities
- Housekeeping and linen services
- Scheduled bus and sedan transportation
- Utilities
- Wi-Fi in all common areas
- Apartment maintenance
- Cable TV
- On-site parking lot for residents and guests

# Studio Deluxe



Apartment No. \_\_\_\_\_ Square Footage \_\_\_\_\_ Apartment Rate \_\_\_\_\_

Notes \_\_\_\_\_

---



---



---



---

Date Quoted \_\_\_\_\_ Quoted by \_\_\_\_\_ Rate Expires \_\_\_\_\_

*Atria Park* OF SAN MATEO

650.378.3000 | AtriaSanMateo.com

Measurements are an approximation and can vary by apartment.  
 All rates are subject to change.  
 License #415600133

## Rental Rate includes

- 24-hour staff
- Three chef-prepared meals per day
- Daily educational, social, cultural and fitness opportunities
- Housekeeping and linen services
- Scheduled bus and sedan transportation
- Utilities
- Wi-Fi in all common areas
- Apartment maintenance
- Cable TV
- On-site parking lot for residents and guests