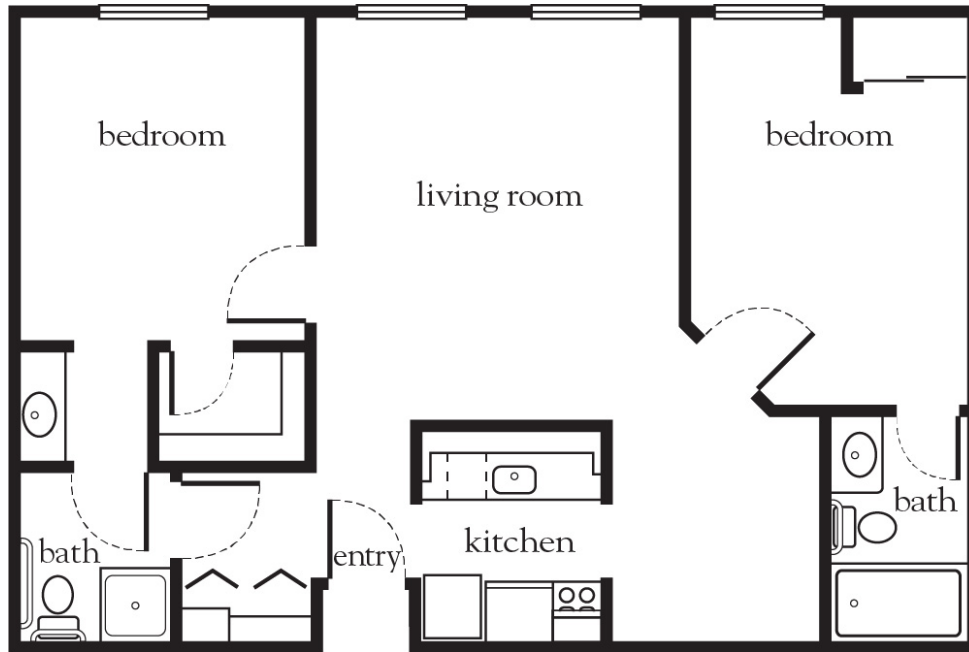


# Two Bedroom A



Apartment No. \_\_\_\_\_ Square Footage \_\_\_\_\_ Apartment Rate \_\_\_\_\_

Notes \_\_\_\_\_

\_\_\_\_\_

\_\_\_\_\_

\_\_\_\_\_

\_\_\_\_\_

Date Quoted \_\_\_\_\_ Quoted by \_\_\_\_\_ Rate Expires \_\_\_\_\_

*Atria* HACIENDA

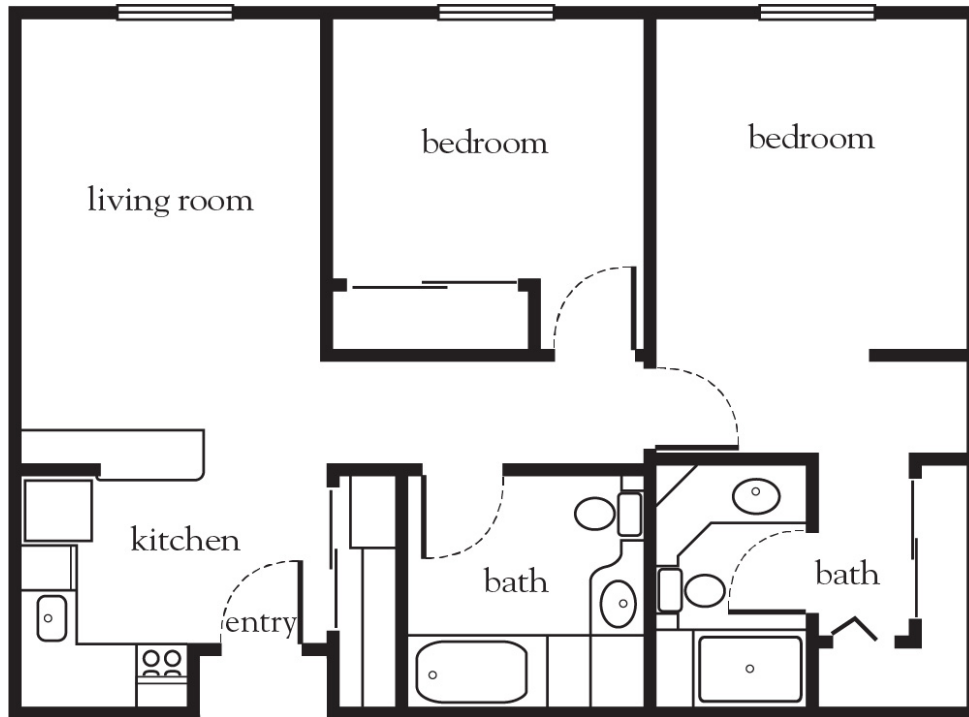
760.341.0890 | AtriaHacienda.com

Measurements are an approximation and can vary by apartment.  
All rates are subject to change.  
License #336400075

## Rental Rate includes

- 24-hour staff
- Three chef-prepared meals per day
- Daily educational, social, cultural and fitness opportunities
- Housekeeping and linen services
- Scheduled bus and sedan transportation
- Utilities
- Wi-Fi in all common areas
- Apartment maintenance
- On-site covered parking for residents and guests

# Two Bedroom B



Apartment No. \_\_\_\_\_ Square Footage \_\_\_\_\_ Apartment Rate \_\_\_\_\_

Notes \_\_\_\_\_

---



---



---



---

Date Quoted \_\_\_\_\_ Quoted by \_\_\_\_\_ Rate Expires \_\_\_\_\_

*Atria* HACIENDA

760.341.0890 | AtriaHacienda.com

Measurements are an approximation and can vary by apartment.  
All rates are subject to change.  
License #336400075

## Rental Rate includes

- 24-hour staff
- Three chef-prepared meals per day
- Daily educational, social, cultural and fitness opportunities
- Housekeeping and linen services
- Scheduled bus and sedan transportation
- Utilities
- Wi-Fi in all common areas
- Apartment maintenance
- On-site covered parking for residents and guests