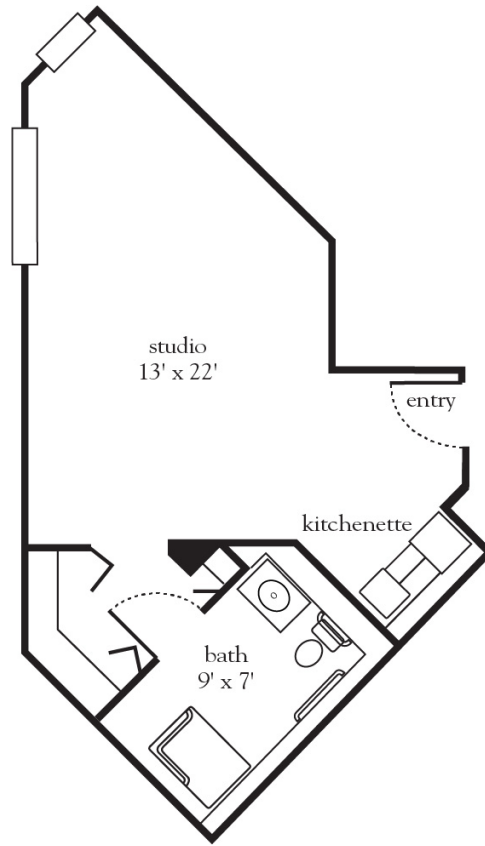


The Beechwood - Studio



Apartment No. _____ Square Footage _____ Apartment Rate _____

Notes _____

Date Quoted _____ Quoted by _____ Rate Expires _____



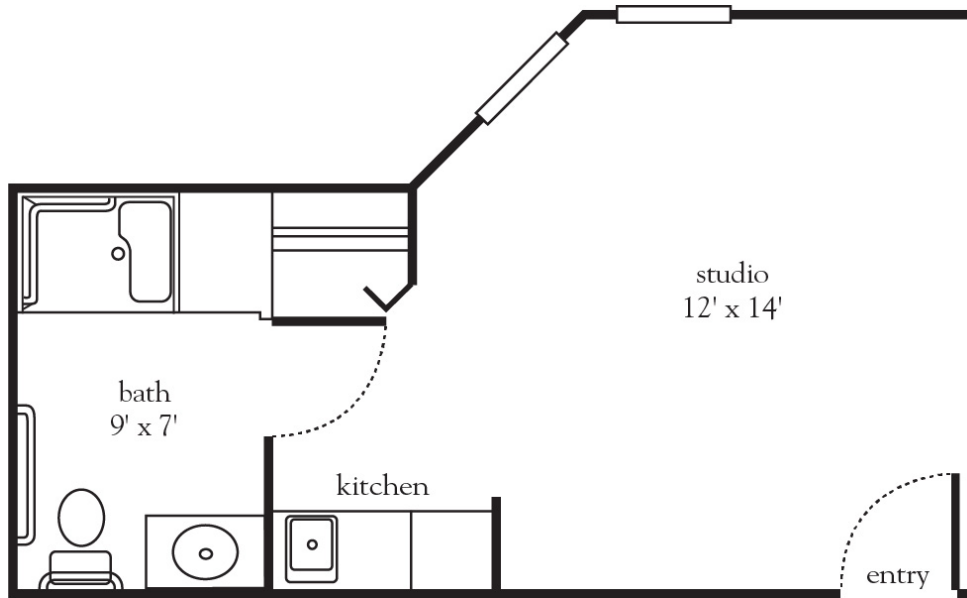
914.693.7700 | AtriaWoodlands.com

Measurements are an approximation and can vary by apartment.
All rates are subject to change.
License 800-S-149 & 800-F-998

Rental Rate includes

- 24-hour staff
- Three chef-prepared meals per day
- Daily educational, social, cultural and fitness opportunities
- Housekeeping and linen services
- Scheduled bus and sedan transportation
- Utilities
- Wi-Fi in all common areas
- In-apartment washer and dryer - selected apartments
- Apartment maintenance

The Boxelder - Studio



Apartment No. _____ Square Footage _____ Apartment Rate _____

Notes _____

Date Quoted _____ Quoted by _____ Rate Expires _____



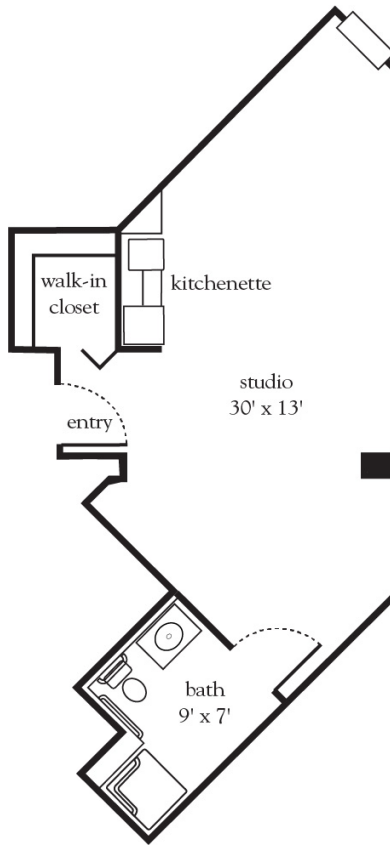
914.693.7700 | AtriaWoodlands.com

Measurements are an approximation and can vary by apartment.
All rates are subject to change.
License 800-S-149 & 800-F-998

Rental Rate includes

- 24-hour staff
- Three chef-prepared meals per day
- Daily educational, social, cultural and fitness opportunities
- Housekeeping and linen services
- Scheduled bus and sedan transportation
- Utilities
- Wi-Fi in all common areas
- In-apartment washer and dryer - selected apartments
- Apartment maintenance

The Chestnut - Studio



Apartment No. _____ Square Footage _____ Apartment Rate _____

Notes _____

Date Quoted _____ Quoted by _____ Rate Expires _____



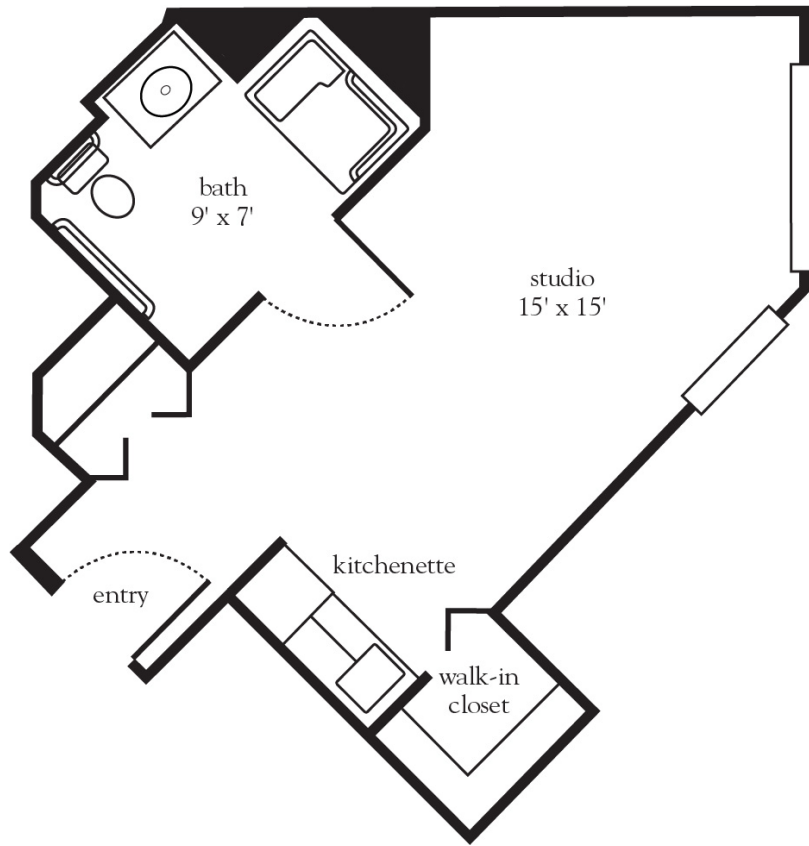
914.693.7700 | AtriaWoodlands.com

Measurements are an approximation and can vary by apartment.
All rates are subject to change.
License 800-S-149 & 800-F-998

Rental Rate includes

- 24-hour staff
- Three chef-prepared meals per day
- Daily educational, social, cultural and fitness opportunities
- Housekeeping and linen services
- Scheduled bus and sedan transportation
- Utilities
- Wi-Fi in all common areas
- In-apartment washer and dryer - selected apartments
- Apartment maintenance

The Hazelnut - Studio



Apartment No. _____ Square Footage _____ Apartment Rate _____

Notes _____

Date Quoted _____ Quoted by _____ Rate Expires _____

Atria WOODLANDS

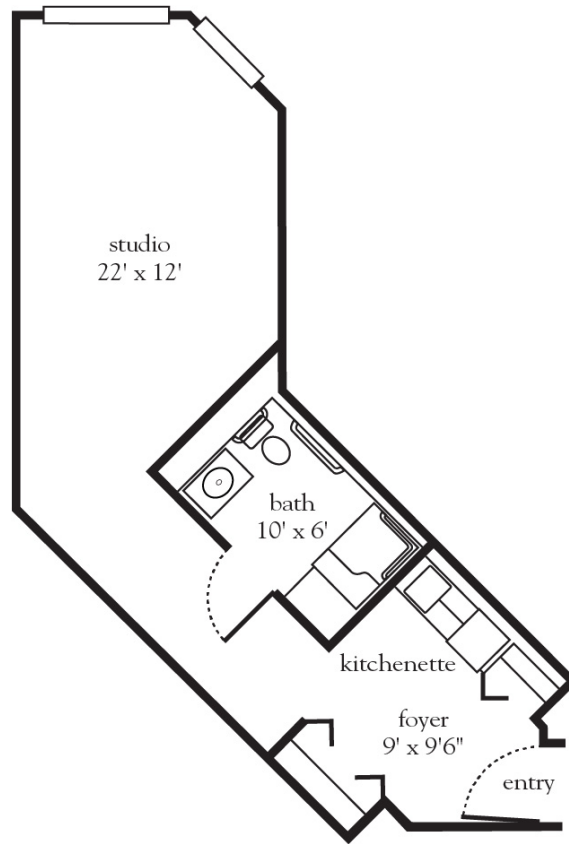
914.693.7700 | AtriaWoodlands.com

Measurements are an approximation and can vary by apartment.
All rates are subject to change.
License 800-S-149 & 800-F-998

Rental Rate includes

- 24-hour staff
- Three chef-prepared meals per day
- Daily educational, social, cultural and fitness opportunities
- Housekeeping and linen services
- Scheduled bus and sedan transportation
- Utilities
- Wi-Fi in all common areas
- In-apartment washer and dryer - selected apartments
- Apartment maintenance

The Mulberry - Studio



Apartment No. _____ Square Footage _____ Apartment Rate _____

Notes _____

Date Quoted _____ Quoted by _____ Rate Expires _____



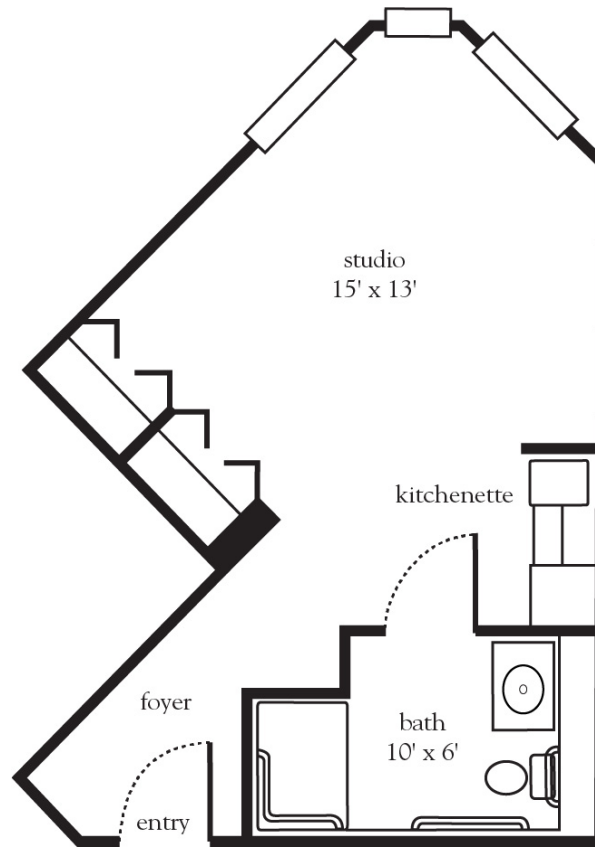
914.693.7700 | AtriaWoodlands.com

Measurements are an approximation and can vary by apartment.
All rates are subject to change.
License 800-S-149 & 800-F-998

Rental Rate includes

- 24-hour staff
- Three chef-prepared meals per day
- Daily educational, social, cultural and fitness opportunities
- Housekeeping and linen services
- Scheduled bus and sedan transportation
- Utilities
- Wi-Fi in all common areas
- In-apartment washer and dryer - selected apartments
- Apartment maintenance

The Redbud - Studio



Apartment No. _____ Square Footage _____ Apartment Rate _____

Notes _____

Date Quoted _____ Quoted by _____ Rate Expires _____

Atria WOODLANDS

914.693.7700 | AtriaWoodlands.com

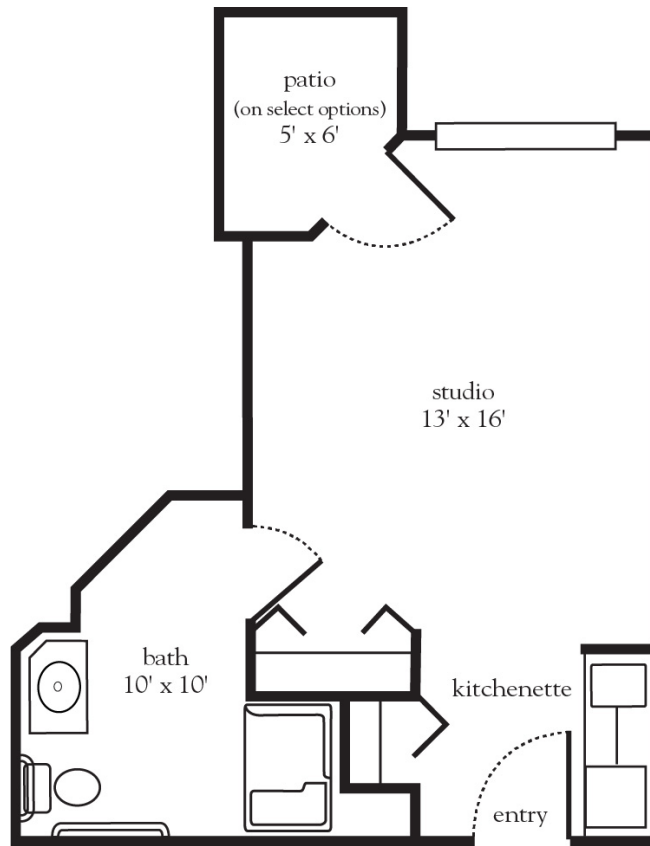
Measurements are an approximation and can vary by apartment.
All rates are subject to change.
License 800-S-149 & 800-F-998

267008

Rental Rate includes

- 24-hour staff
- Three chef-prepared meals per day
- Daily educational, social, cultural and fitness opportunities
- Housekeeping and linen services
- Scheduled bus and sedan transportation
- Utilities
- Wi-Fi in all common areas
- In-apartment washer and dryer - selected apartments
- Apartment maintenance

The Sweetleaf - Studio



Apartment No. _____ Square Footage _____ Apartment Rate _____

Notes _____

Date Quoted _____ Quoted by _____ Rate Expires _____

Atria WOODLANDS

914.693.7700 | AtriaWoodlands.com

Measurements are an approximation and can vary by apartment.
All rates are subject to change.
License 800-S-149 & 800-F-998

Rental Rate includes

- 24-hour staff
- Three chef-prepared meals per day
- Daily educational, social, cultural and fitness opportunities
- Housekeeping and linen services
- Scheduled bus and sedan transportation
- Utilities
- Wi-Fi in all common areas
- In-apartment washer and dryer - selected apartments
- Apartment maintenance