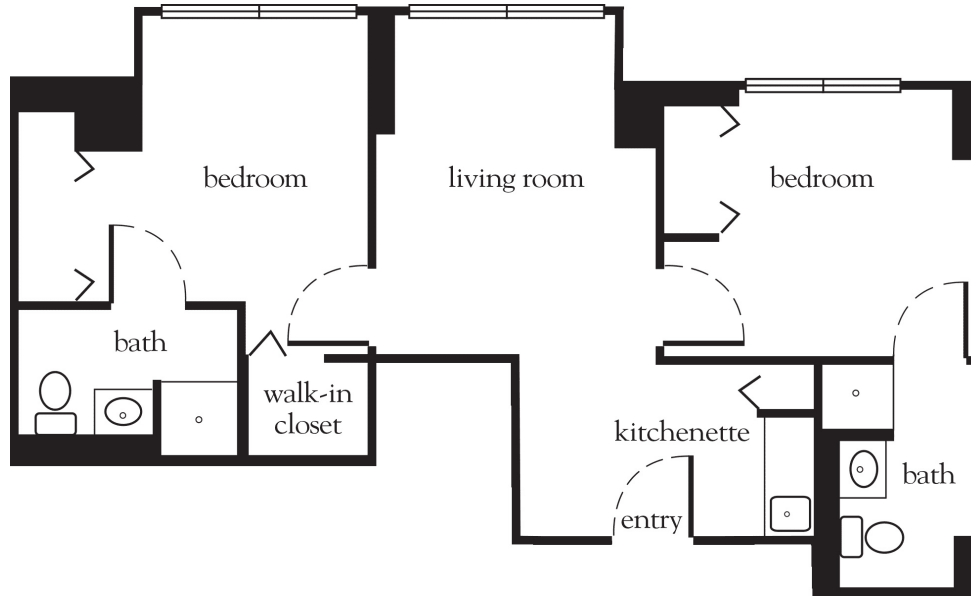


# Two Bedroom



Apartment No. \_\_\_\_\_ Square Footage \_\_\_\_\_ Apartment Rate \_\_\_\_\_

Notes \_\_\_\_\_

\_\_\_\_\_

\_\_\_\_\_

\_\_\_\_\_

Date Quoted \_\_\_\_\_ Quoted by \_\_\_\_\_ Rate Expires \_\_\_\_\_

*Atria* CUTTER MILL

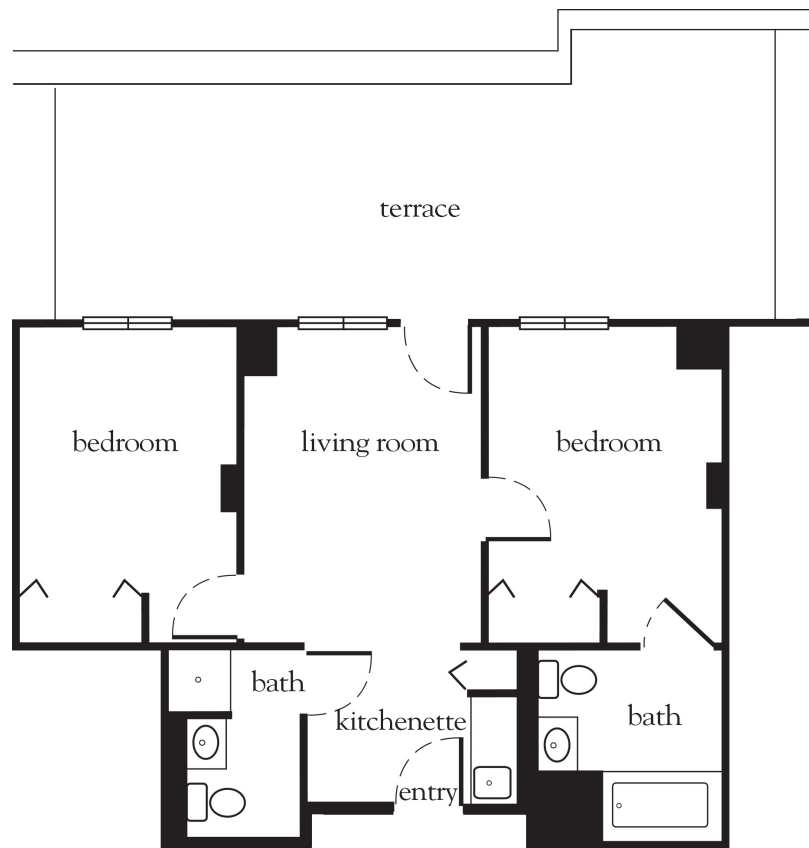
516.773.8730 | AtriaCutterMill.com

Measurements are an approximation and can vary by apartment.  
All rates are subject to change.  
License 400-S-328

## Rental Rate includes

- 24-hour staff
- Three chef-prepared meals per day
- Daily educational, social, cultural and fitness opportunities
- Housekeeping and linen services
- Scheduled bus and sedan transportation
- Utilities
- Apartment maintenance
- Cable TV
- On-site garage parking for residents and guests
- Individual thermostat control

# Two Bedroom With Terrace



Apartment No. \_\_\_\_\_ Square Footage \_\_\_\_\_ Apartment Rate \_\_\_\_\_

Notes \_\_\_\_\_

\_\_\_\_\_

\_\_\_\_\_

\_\_\_\_\_

Date Quoted \_\_\_\_\_ Quoted by \_\_\_\_\_ Rate Expires \_\_\_\_\_

*Atria* CUTTER MILL

516.773.8730 | AtriaCutterMill.com

Measurements are an approximation and can vary by apartment.  
All rates are subject to change.  
License 400-S-328

## Rental Rate includes

- 24-hour staff
- Three chef-prepared meals per day
- Daily educational, social, cultural and fitness opportunities
- Housekeeping and linen services
- Scheduled bus and sedan transportation
- Utilities
- Apartment maintenance
- Cable TV
- On-site garage parking for residents and guests
- Individual thermostat control