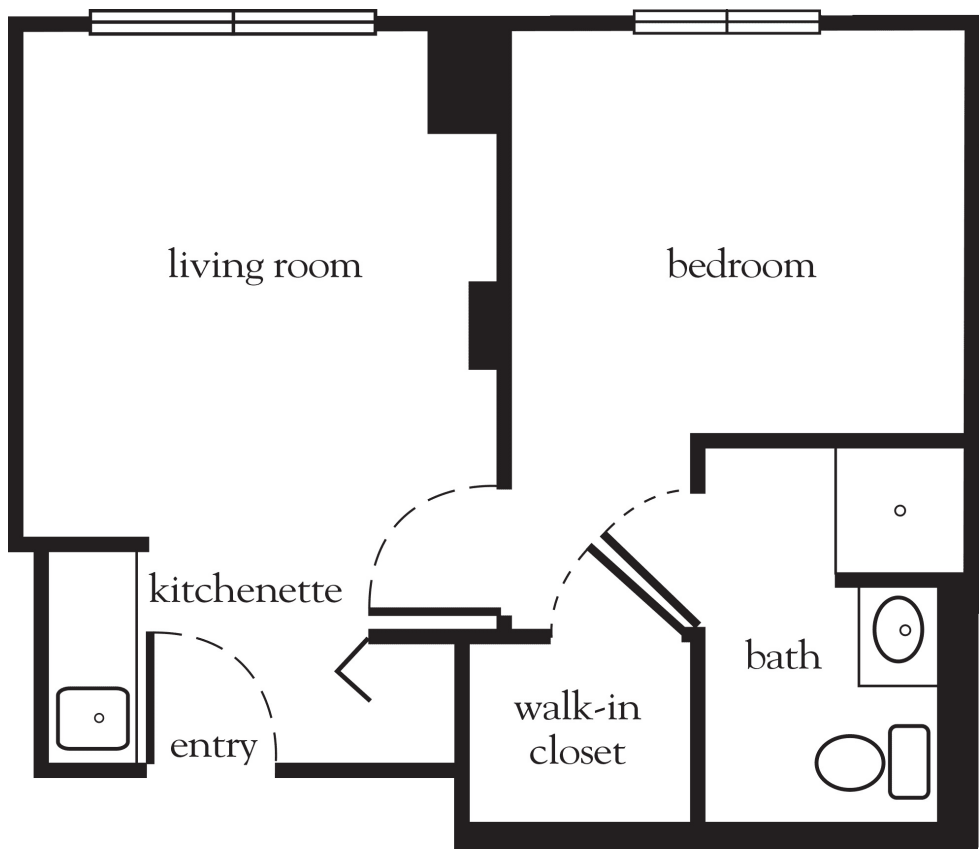


One Bedroom A



Apartment No. _____ Square Footage _____ Apartment Rate _____

Notes _____

Date Quoted _____ Quoted by _____ Rate Expires _____

Atria CUTTER MILL

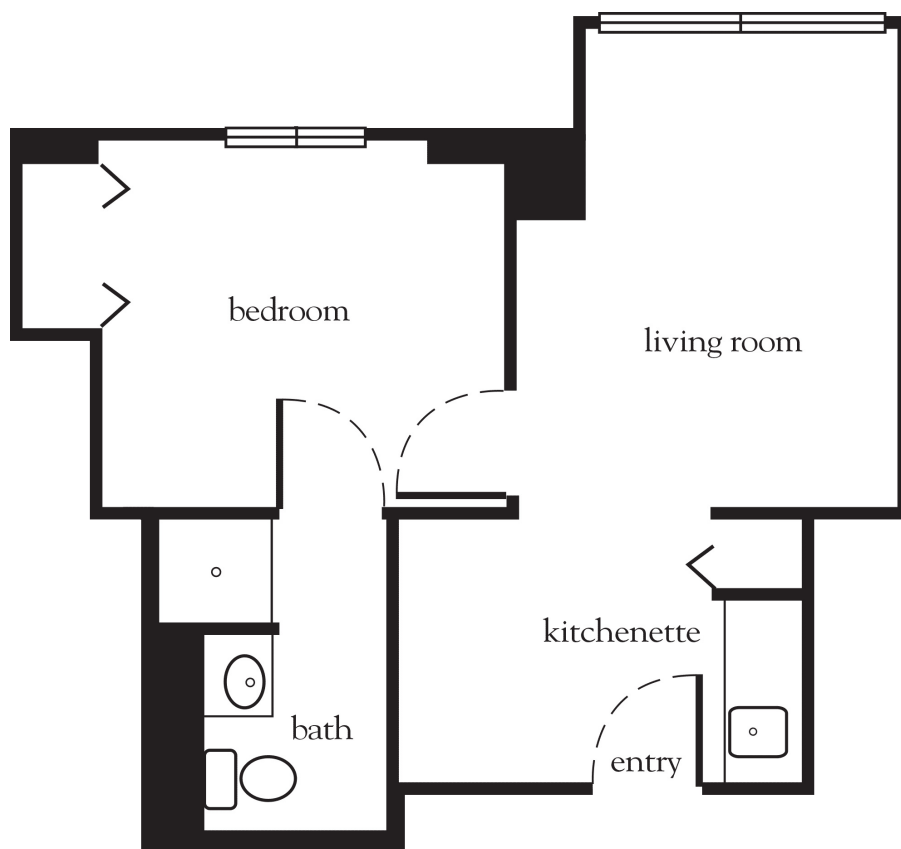
516.773.8730 | AtriaCutterMill.com

Measurements are an approximation and can vary by apartment.
All rates are subject to change.
License 400-S-328

Rental Rate includes

- 24-hour staff
- Three chef-prepared meals per day
- Daily educational, social, cultural and fitness opportunities
- Housekeeping and linen services
- Scheduled bus and sedan transportation
- Utilities
- Apartment maintenance
- Cable TV
- On-site garage parking for residents and guests
- Individual thermostat control

One Bedroom B



Apartment No. _____ Square Footage _____ Apartment Rate _____

Notes _____

Date Quoted _____ Quoted by _____ Rate Expires _____

Atria CUTTER MILL

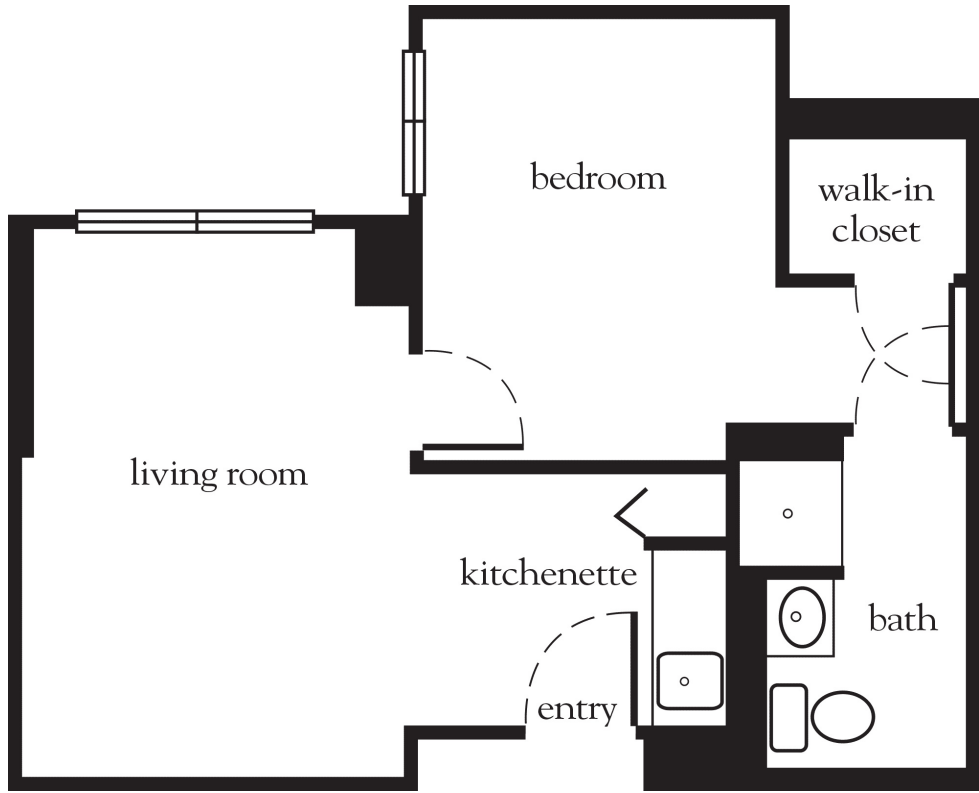
516.773.8730 | AtriaCutterMill.com

Measurements are an approximation and can vary by apartment.
All rates are subject to change.
License 400-S-328

Rental Rate includes

- 24-hour staff
- Three chef-prepared meals per day
- Daily educational, social, cultural and fitness opportunities
- Housekeeping and linen services
- Scheduled bus and sedan transportation
- Utilities
- Apartment maintenance
- Cable TV
- On-site garage parking for residents and guests
- Individual thermostat control

One Bedroom C



Apartment No. _____ Square Footage _____ Apartment Rate _____

Notes _____

Date Quoted _____ Quoted by _____ Rate Expires _____

Atria CUTTER MILL

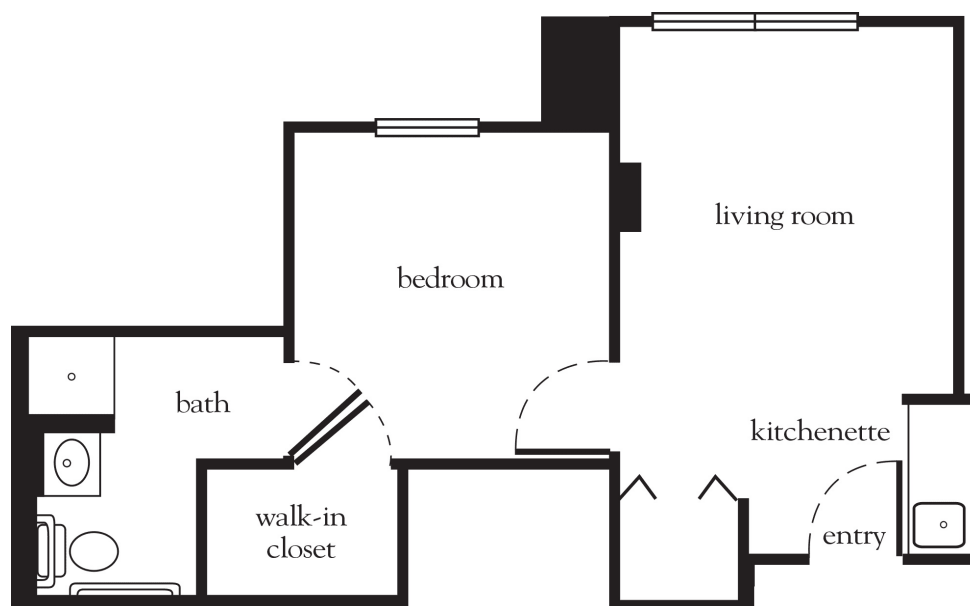
516.773.8730 | AtriaCutterMill.com

Measurements are an approximation and can vary by apartment.
All rates are subject to change.
License 400-S-328

Rental Rate includes

- 24-hour staff
- Three chef-prepared meals per day
- Daily educational, social, cultural and fitness opportunities
- Housekeeping and linen services
- Scheduled bus and sedan transportation
- Utilities
- Apartment maintenance
- Cable TV
- On-site garage parking for residents and guests
- Individual thermostat control

One Bedroom D



Apartment No. _____ Square Footage _____ Apartment Rate _____

Notes _____

Date Quoted _____ Quoted by _____ Rate Expires _____

Atria CUTTER MILL

516.773.8730 | AtriaCutterMill.com

Measurements are an approximation and can vary by apartment.
All rates are subject to change.
License 400-S-328

Rental Rate includes

- 24-hour staff
- Three chef-prepared meals per day
- Daily educational, social, cultural and fitness opportunities
- Housekeeping and linen services
- Scheduled bus and sedan transportation
- Utilities
- Apartment maintenance
- Cable TV
- On-site garage parking for residents and guests
- Individual thermostat control