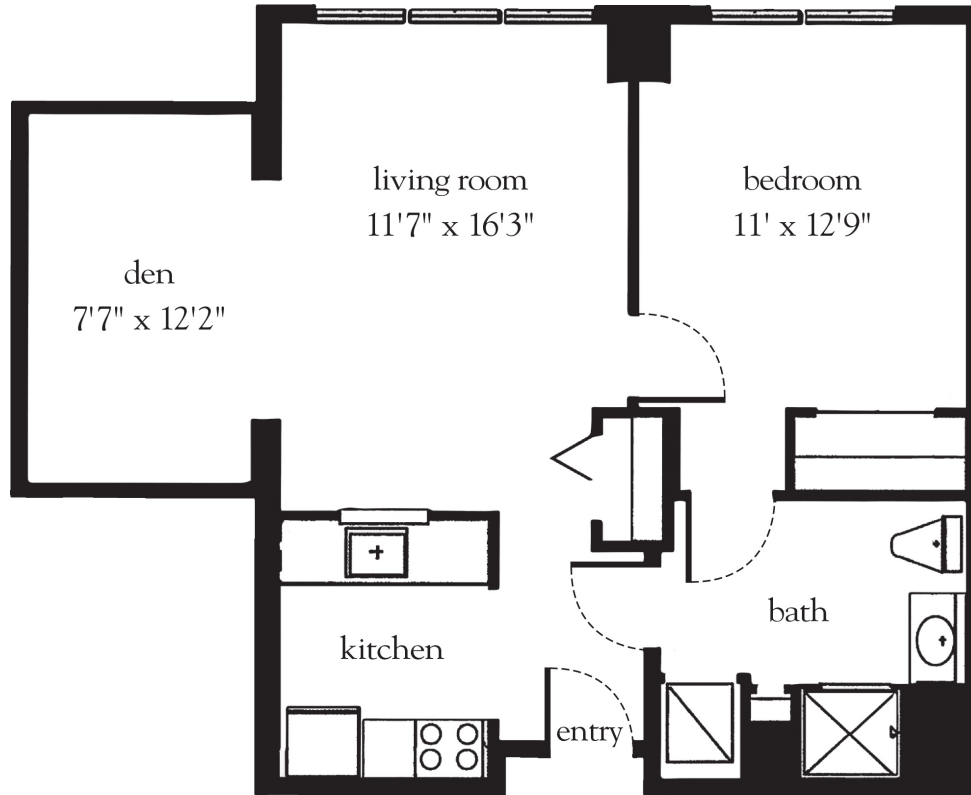


Chantilly - One Bedroom



Apartment No. _____ Square Footage _____ Apartment Rate _____

Notes _____

Date Quoted _____ Quoted by _____ Rate Expires _____

Atria RYE BROOK

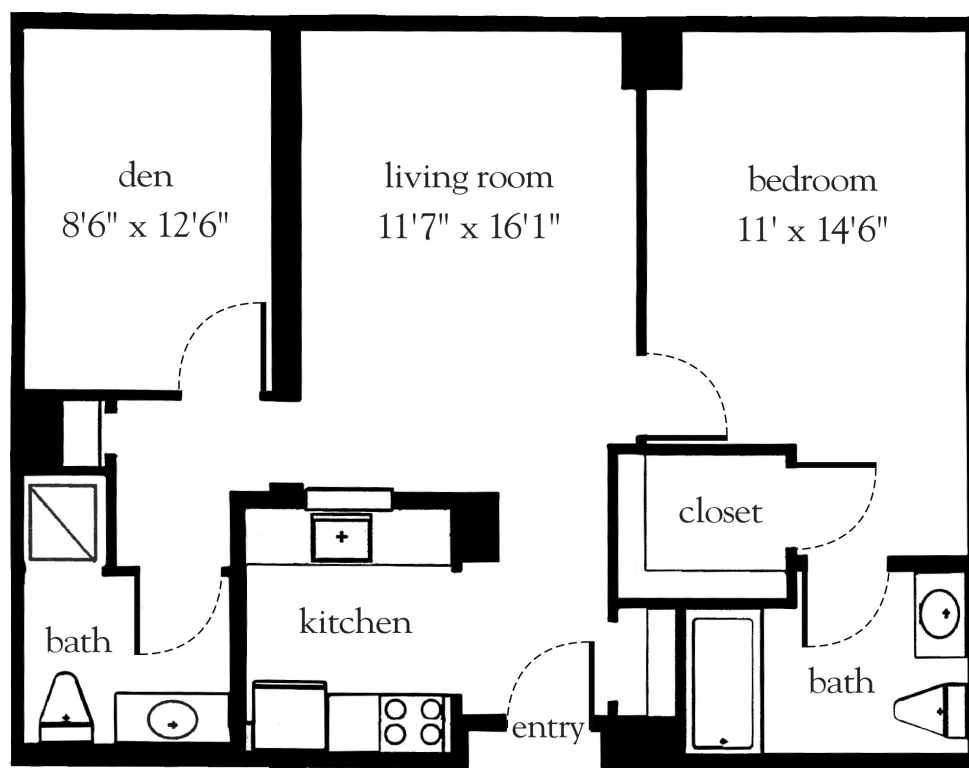
914.939.2900 | AtriaRyeBrook.com

Measurements are an approximation and can vary by apartment.
All rates are subject to change.

Rental Rate includes

- 24-hour staff
- Three chef-prepared meals per day
- Daily educational, social, cultural and fitness opportunities
- Housekeeping and linen services
- Scheduled bus and sedan transportation
- All utilities, excluding telephone and cable
- Wi-Fi in all common areas
- In-apartment washer and dryer - all apartments

Giverny - One Bedroom



Apartment No. _____ Square Footage _____ Apartment Rate _____

Notes _____

Date Quoted _____ Quoted by _____ Rate Expires _____

Atria RYE BROOK

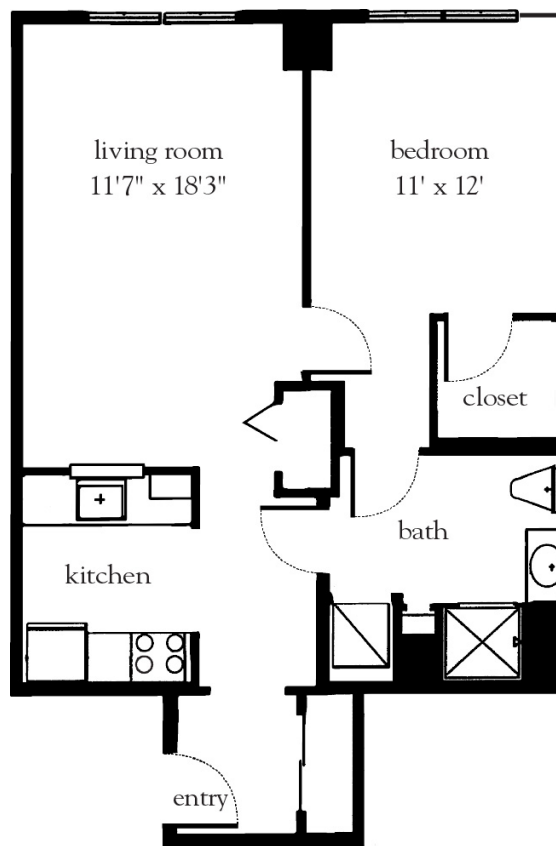
914.939.2900 | AtriaRyeBrook.com

Measurements are an approximation and can vary by apartment.
All rates are subject to change.

Rental Rate includes

- 24-hour staff
- Three chef-prepared meals per day
- Daily educational, social, cultural and fitness opportunities
- Housekeeping and linen services
- Scheduled bus and sedan transportation
- All utilities, excluding telephone and cable
- Wi-Fi in all common areas
- In-apartment washer and dryer - all apartments

Luxembourg - One Bedroom



Apartment No. _____ Square Footage _____ Apartment Rate _____

Notes _____

Date Quoted _____ Quoted by _____ Rate Expires _____

Atria RYE BROOK

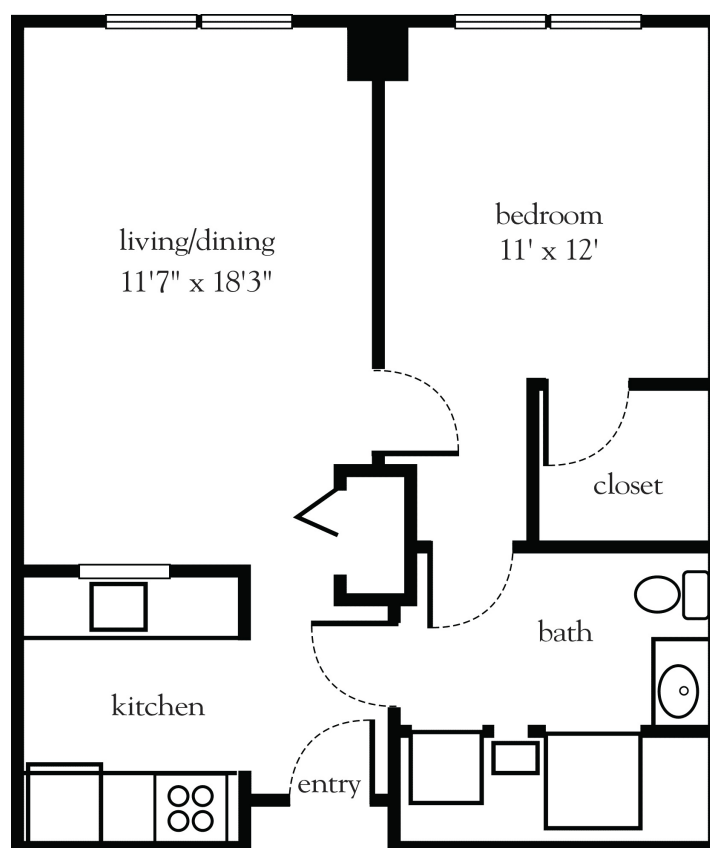
914.939.2900 | AtriaRyeBrook.com

Measurements are an approximation and can vary by apartment.
All rates are subject to change.

Rental Rate includes

- 24-hour staff
- Three chef-prepared meals per day
- Daily educational, social, cultural and fitness opportunities
- Housekeeping and linen services
- Scheduled bus and sedan transportation
- All utilities, excluding telephone and cable
- Wi-Fi in all common areas
- In-apartment washer and dryer - all apartments

Penshurst - One Bedroom



Apartment No. _____ Square Footage _____ Apartment Rate _____

Notes _____

Date Quoted _____ Quoted by _____ Rate Expires _____

Atria RYE BROOK

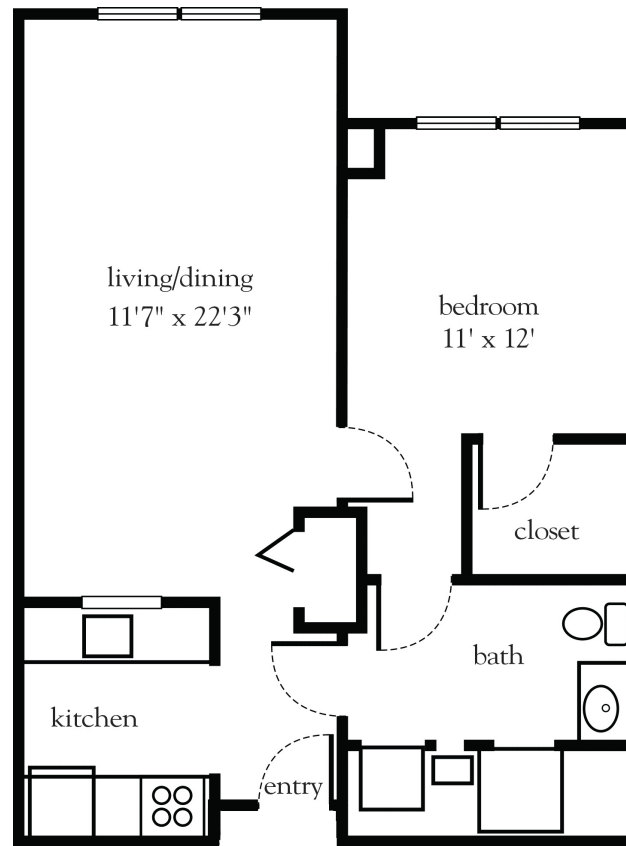
914.939.2900 | AtriaRyeBrook.com

Measurements are an approximation and can vary by apartment.
All rates are subject to change.

Rental Rate includes

- 24-hour staff
- Three chef-prepared meals per day
- Daily educational, social, cultural and fitness opportunities
- Housekeeping and linen services
- Scheduled bus and sedan transportation
- All utilities, excluding telephone and cable
- Wi-Fi in all common areas
- In-apartment washer and dryer - all apartments

Sonnenberg - One Bedroom



Apartment No. _____ Square Footage _____ Apartment Rate _____

Notes _____

Date Quoted _____ Quoted by _____ Rate Expires _____

Atria RYE BROOK

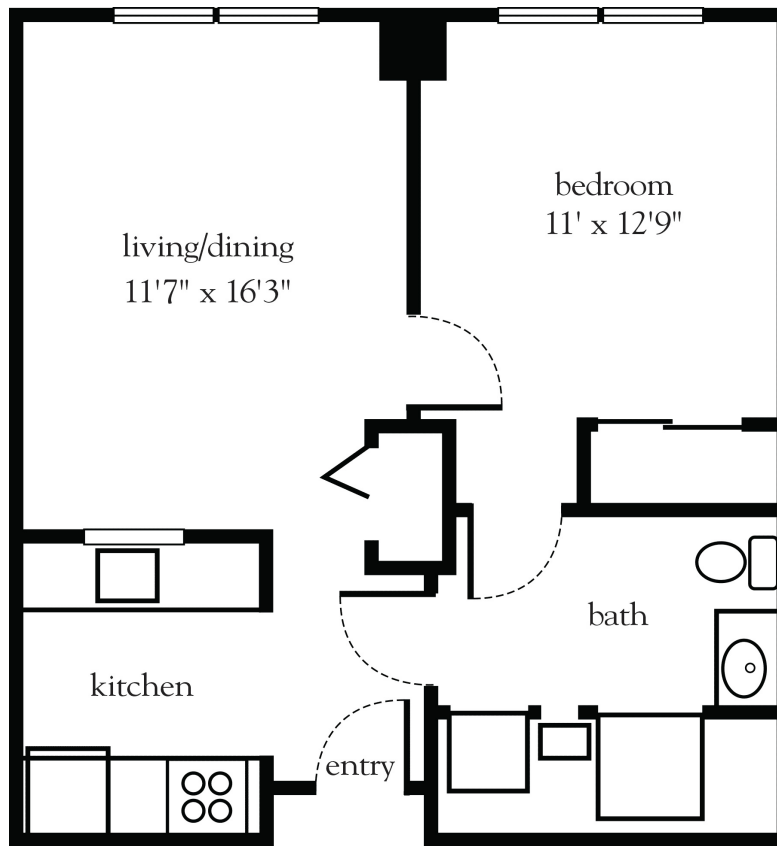
914.939.2900 | AtriaRyeBrook.com

Measurements are an approximation and can vary by apartment.
All rates are subject to change.

Rental Rate includes

- 24-hour staff
- Three chef-prepared meals per day
- Daily educational, social, cultural and fitness opportunities
- Housekeeping and linen services
- Scheduled bus and sedan transportation
- All utilities, excluding telephone and cable
- Wi-Fi in all common areas
- In-apartment washer and dryer - all apartments

Wakehurst - One Bedroom



Apartment No. _____ Square Footage _____ Apartment Rate _____

Notes _____

Date Quoted _____ Quoted by _____ Rate Expires _____

Atria RYE BROOK

914.939.2900 | AtriaRyeBrook.com

Measurements are an approximation and can vary by apartment.
All rates are subject to change.

Rental Rate includes

- 24-hour staff
- Three chef-prepared meals per day
- Daily educational, social, cultural and fitness opportunities
- Housekeeping and linen services
- Scheduled bus and sedan transportation
- All utilities, excluding telephone and cable
- Wi-Fi in all common areas
- In-apartment washer and dryer - all apartments