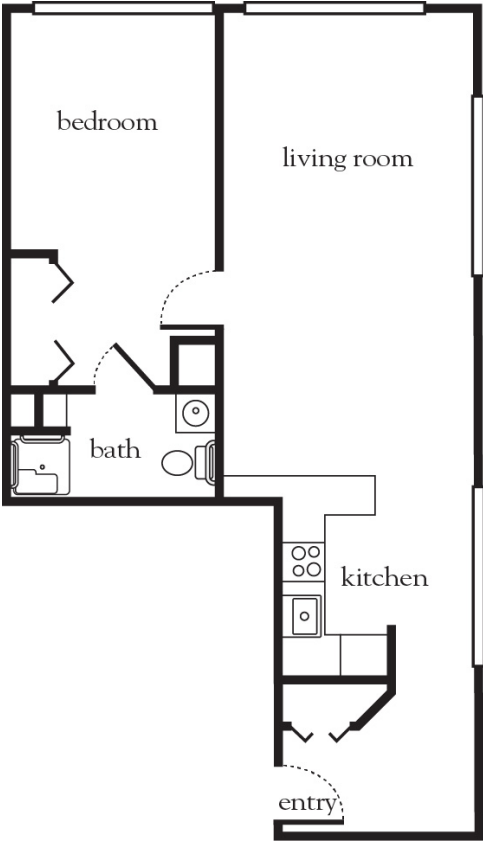


# One Bedroom



Apartment No. \_\_\_\_\_ Square Footage \_\_\_\_\_ Apartment Rate \_\_\_\_\_

Notes \_\_\_\_\_  
\_\_\_\_\_  
\_\_\_\_\_  
\_\_\_\_\_

Date Quoted \_\_\_\_\_ Quoted by \_\_\_\_\_ Rate Expires \_\_\_\_\_

*Atria* CENTER CITY  
215.564.5455 | [AtriaCenterCity.com](http://AtriaCenterCity.com)

Measurements are an approximation and can vary by apartment.  
All rates are subject to change.

### Rental Rate includes

- 24-hour staff
- Three chef-prepared meals per day
- Daily educational, social, cultural and fitness opportunities
- Housekeeping and linen services
- Scheduled bus and sedan transportation
- Utilities
- Wi-Fi in all common areas and apartments
- Apartment maintenance
- Individual thermostat control