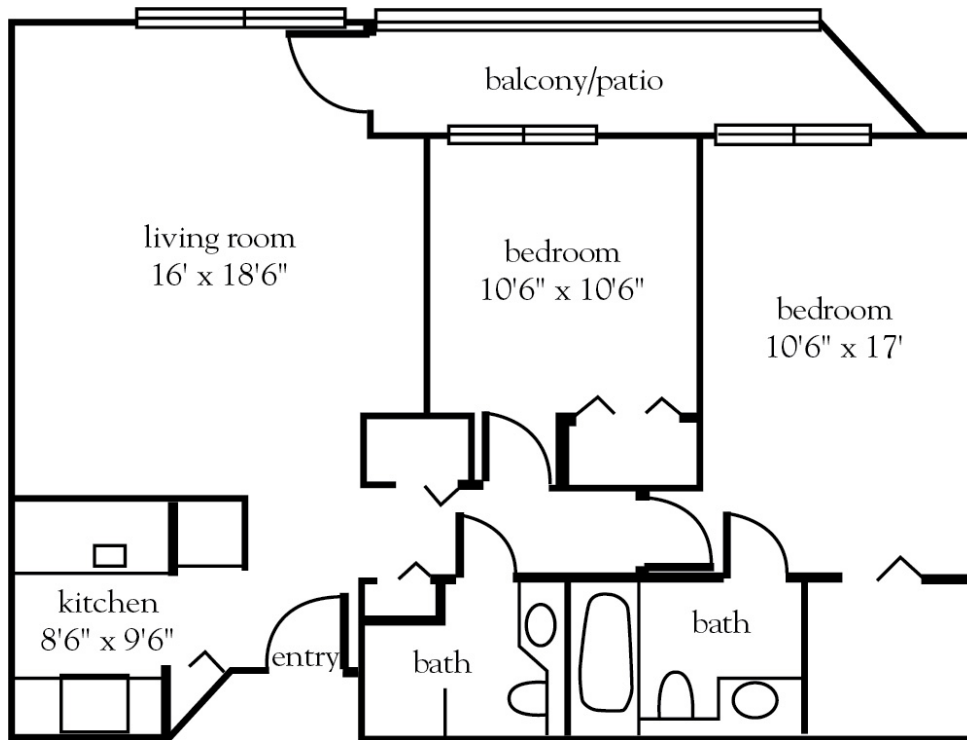


Two Bedroom A



Apartment No. _____ Square Footage _____ Apartment Rate _____

Notes _____

Date Quoted _____ Quoted by _____ Rate Expires _____

Atria BELL COURT GARDENS

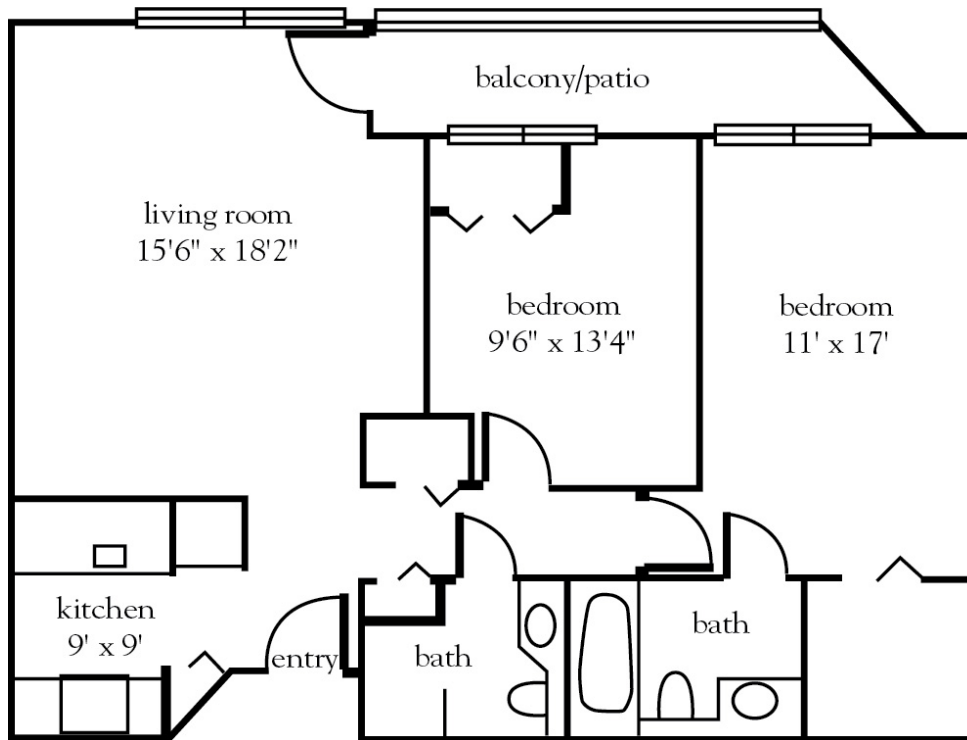
520.886.3600 | AtriaBellCourtGardens.com

Measurements are an approximation and can vary by apartment.
 All rates are subject to change.

Rental Rate includes

- 24-hour staff
- Two chef-prepared meals per day
- Daily educational, social, cultural and fitness opportunities
- Housekeeping, personal laundry and linen services
- Scheduled bus and sedan transportation
- Utilities
- Apartment maintenance
- Cable TV
- Concierge service
- Individual thermostat control

Two Bedroom B



Apartment No. _____ Square Footage _____ Apartment Rate _____

Notes _____

Date Quoted _____ Quoted by _____ Rate Expires _____

Atria BELL COURT GARDENS

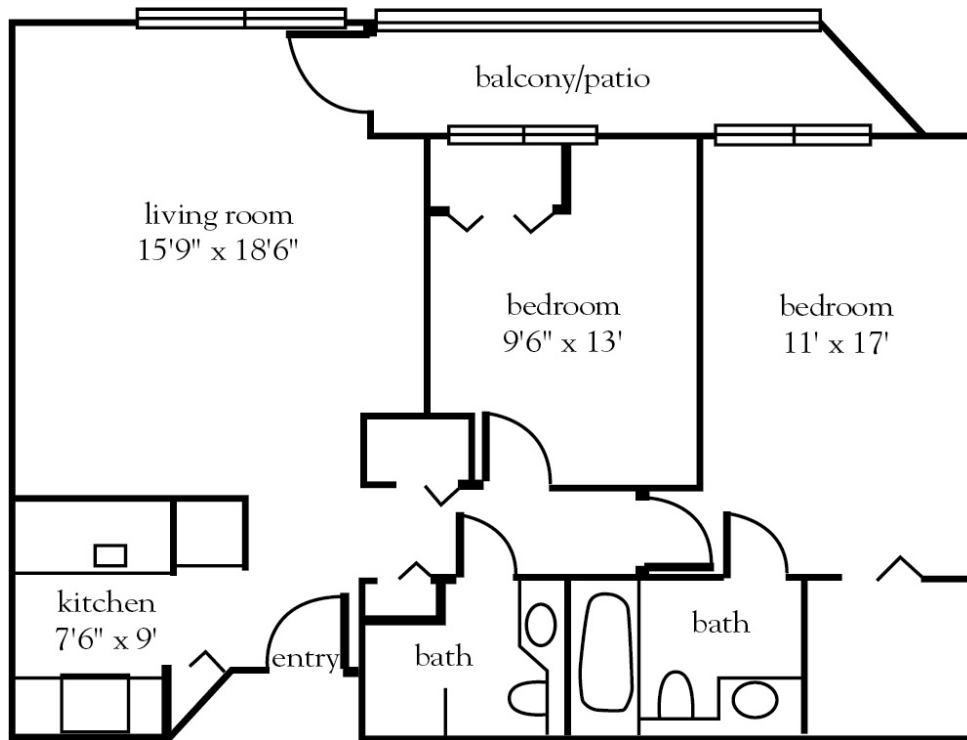
520.886.3600 | AtriaBellCourtGardens.com

Measurements are an approximation and can vary by apartment.
All rates are subject to change.

Rental Rate includes

- 24-hour staff
- Two chef-prepared meals per day
- Daily educational, social, cultural and fitness opportunities
- Housekeeping, personal laundry and linen services
- Scheduled bus and sedan transportation
- Utilities
- Apartment maintenance
- Cable TV
- Concierge service
- Individual thermostat control

Two Bedroom C



Apartment No. _____ Square Footage _____ Apartment Rate _____

Notes _____

Date Quoted _____ Quoted by _____ Rate Expires _____

Atria BELL COURT GARDENS

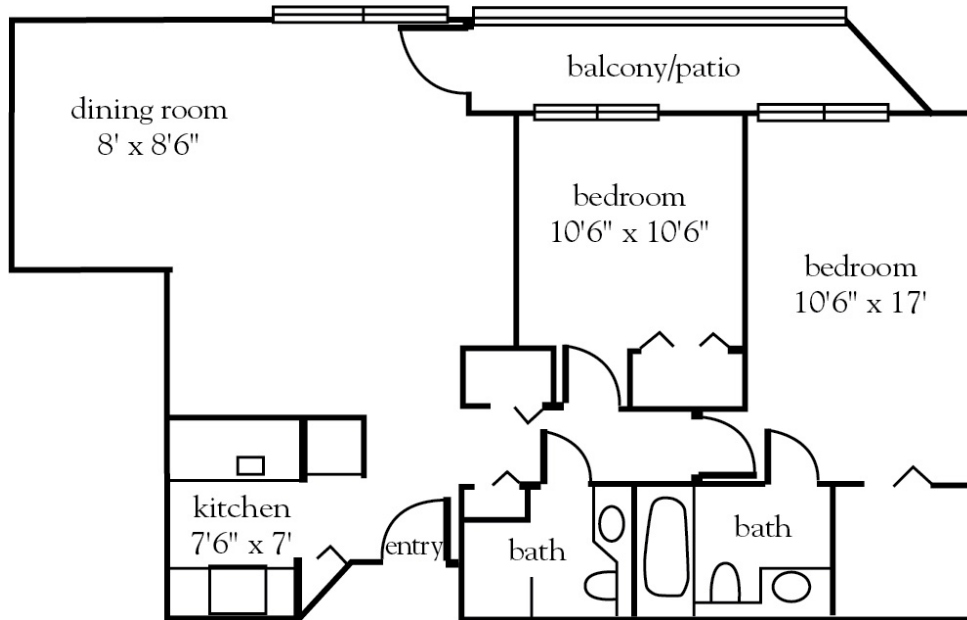
520.886.3600 | AtriaBellCourtGardens.com

Measurements are an approximation and can vary by apartment.
 All rates are subject to change.

Rental Rate includes

- 24-hour staff
- Two chef-prepared meals per day
- Daily educational, social, cultural and fitness opportunities
- Housekeeping, personal laundry and linen services
- Scheduled bus and sedan transportation
- Utilities
- Apartment maintenance
- Cable TV
- Concierge service
- Individual thermostat control

Two Bedroom D



Apartment No. _____ Square Footage _____ Apartment Rate _____

Notes _____

Date Quoted _____ Quoted by _____ Rate Expires _____

Atria BELL COURT GARDENS

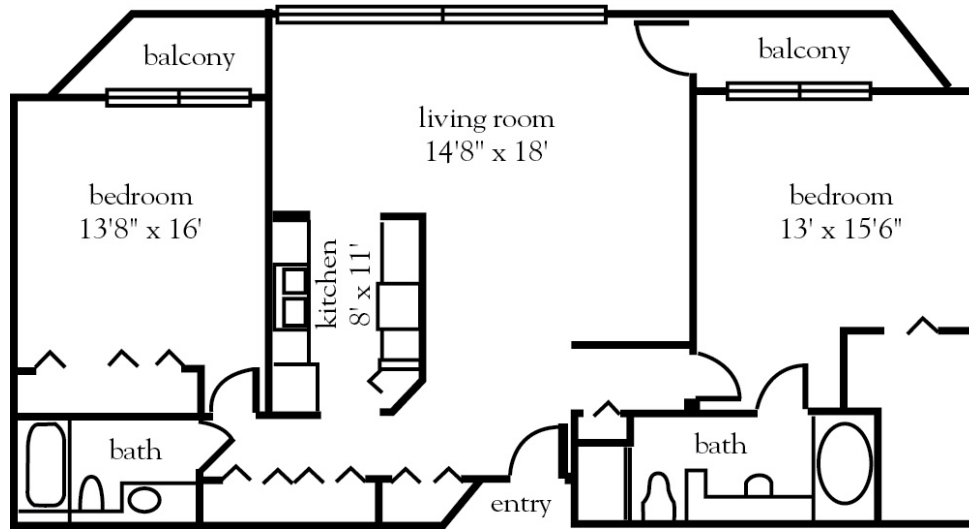
520.886.3600 | AtriaBellCourtGardens.com

Measurements are an approximation and can vary by apartment.
 All rates are subject to change.

Rental Rate includes

- 24-hour staff
- Two chef-prepared meals per day
- Daily educational, social, cultural and fitness opportunities
- Housekeeping, personal laundry and linen services
- Scheduled bus and sedan transportation
- Utilities
- Apartment maintenance
- Cable TV
- Concierge service
- Individual thermostat control

Two Bedroom Deluxe



Apartment No. _____ Square Footage _____ Apartment Rate _____

Notes _____

Date Quoted _____ Quoted by _____ Rate Expires _____

Atria BELL COURT GARDENS

520.886.3600 | AtriaBellCourtGardens.com

Measurements are an approximation and can vary by apartment.
All rates are subject to change.

Rental Rate includes

- 24-hour staff
- Two chef-prepared meals per day
- Daily educational, social, cultural and fitness opportunities
- Housekeeping, personal laundry and linen services
- Scheduled bus and sedan transportation
- Utilities
- Apartment maintenance
- Cable TV
- Concierge service
- Individual thermostat control