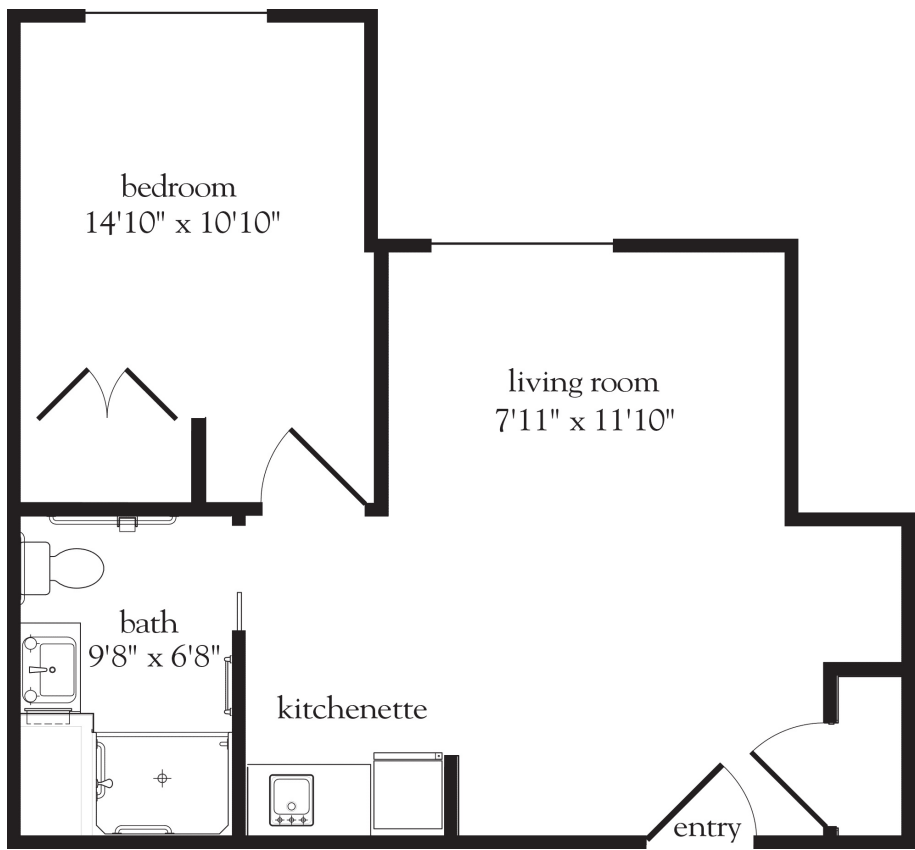


# One Bedroom A



Apartment No. \_\_\_\_\_ Square Footage \_\_\_\_\_ Apartment Rate \_\_\_\_\_

Notes \_\_\_\_\_

\_\_\_\_\_

\_\_\_\_\_

\_\_\_\_\_

\_\_\_\_\_

Date Quoted \_\_\_\_\_ Quoted by \_\_\_\_\_ Rate Expires \_\_\_\_\_

*Atria* EAST NORTHPORT

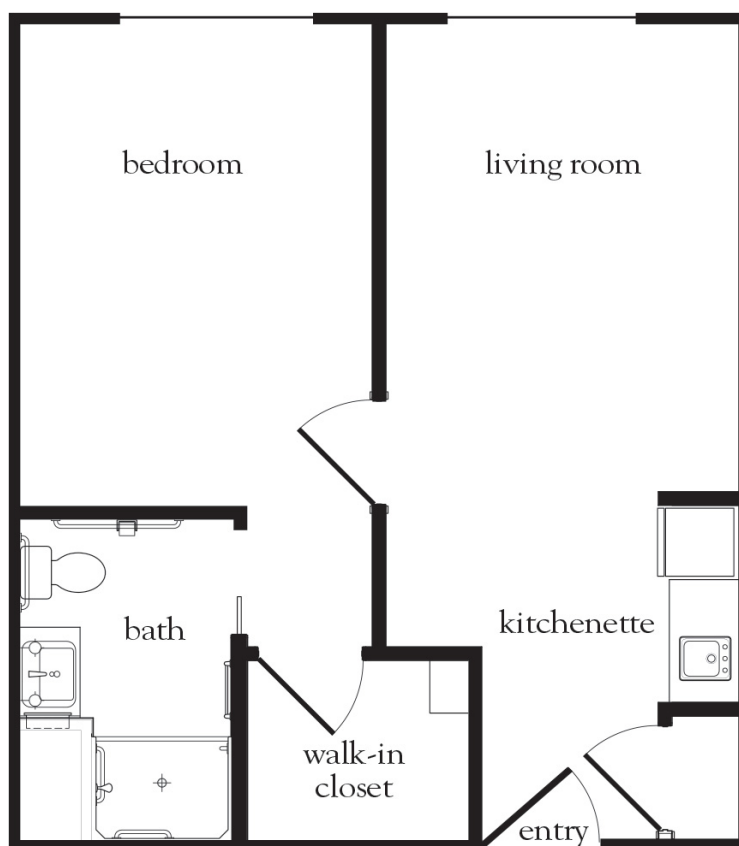
631.757.8000 | AtriaEastNorthport.com

Measurements are an approximation and can vary by apartment.  
All rates are subject to change.  
License 700-F-929

## Rental Rate includes

- 24-hour staff
- Three chef-prepared meals per day
- Daily educational, social, cultural and fitness opportunities
- Housekeeping and linen services
- Scheduled bus and sedan transportation
- Utilities
- Wi-Fi in all common areas
- Apartment maintenance
- Cable TV
- On-site parking lot for residents and guests

# One Bedroom B



Apartment No. \_\_\_\_\_ Square Footage \_\_\_\_\_ Apartment Rate \_\_\_\_\_

Notes \_\_\_\_\_

\_\_\_\_\_

\_\_\_\_\_

\_\_\_\_\_

\_\_\_\_\_

Date Quoted \_\_\_\_\_ Quoted by \_\_\_\_\_ Rate Expires \_\_\_\_\_

*Atria* EAST NORTHPORT

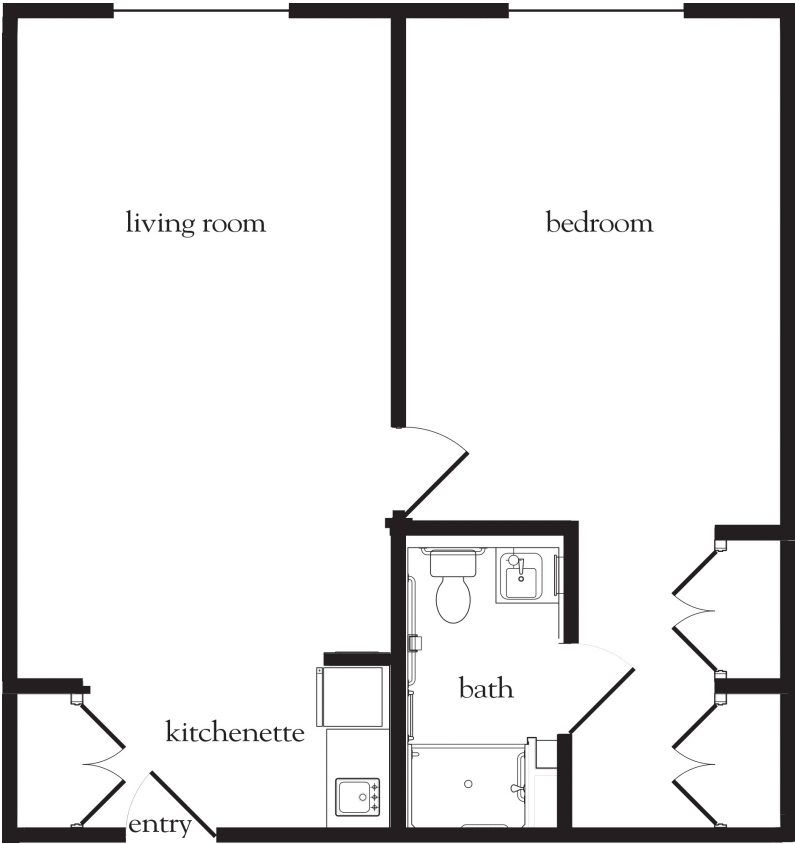
631.757.8000 | AtriaEastNorthport.com

Measurements are an approximation and can vary by apartment.  
All rates are subject to change.  
License 700-F-929

## Rental Rate includes

- 24-hour staff
- Three chef-prepared meals per day
- Daily educational, social, cultural and fitness opportunities
- Housekeeping and linen services
- Scheduled bus and sedan transportation
- Utilities
- Wi-Fi in all common areas
- Apartment maintenance
- Cable TV
- On-site parking lot for residents and guests

# One Bedroom C



Apartment No. \_\_\_\_\_ Square Footage \_\_\_\_\_ Apartment Rate \_\_\_\_\_

Notes \_\_\_\_\_

\_\_\_\_\_

\_\_\_\_\_

\_\_\_\_\_

\_\_\_\_\_

Date Quoted \_\_\_\_\_ Quoted by \_\_\_\_\_ Rate Expires \_\_\_\_\_

*Atria* EAST NORTHPORT

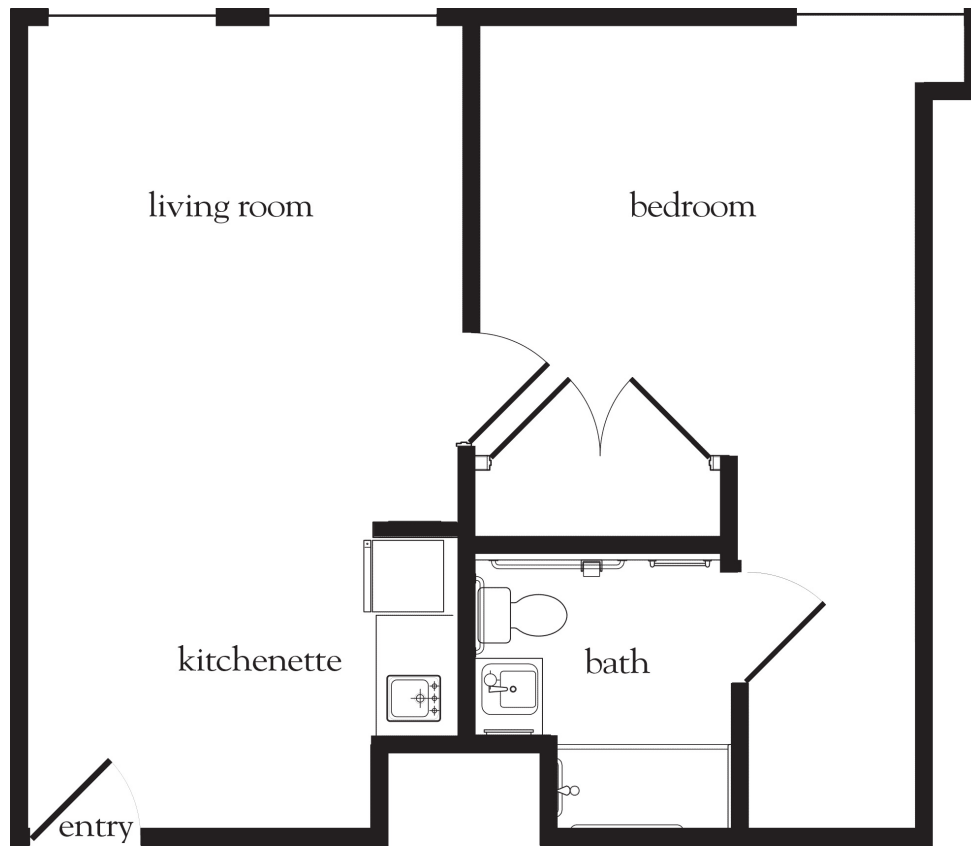
631.757.8000 | [AtriaEastNorthport.com](http://AtriaEastNorthport.com)

Measurements are an approximation and can vary by apartment.  
All rates are subject to change.  
License 700-F-929

## Rental Rate includes

- 24-hour staff
- Three chef-prepared meals per day
- Daily educational, social, cultural and fitness opportunities
- Housekeeping and linen services
- Scheduled bus and sedan transportation
- Utilities
- Wi-Fi in all common areas
- Apartment maintenance
- Cable TV
- On-site parking lot for residents and guests

# One Bedroom D



Apartment No. \_\_\_\_\_ Square Footage \_\_\_\_\_ Apartment Rate \_\_\_\_\_

Notes \_\_\_\_\_

\_\_\_\_\_

\_\_\_\_\_

\_\_\_\_\_

\_\_\_\_\_

Date Quoted \_\_\_\_\_ Quoted by \_\_\_\_\_ Rate Expires \_\_\_\_\_

*Atria* EAST NORTHPORT

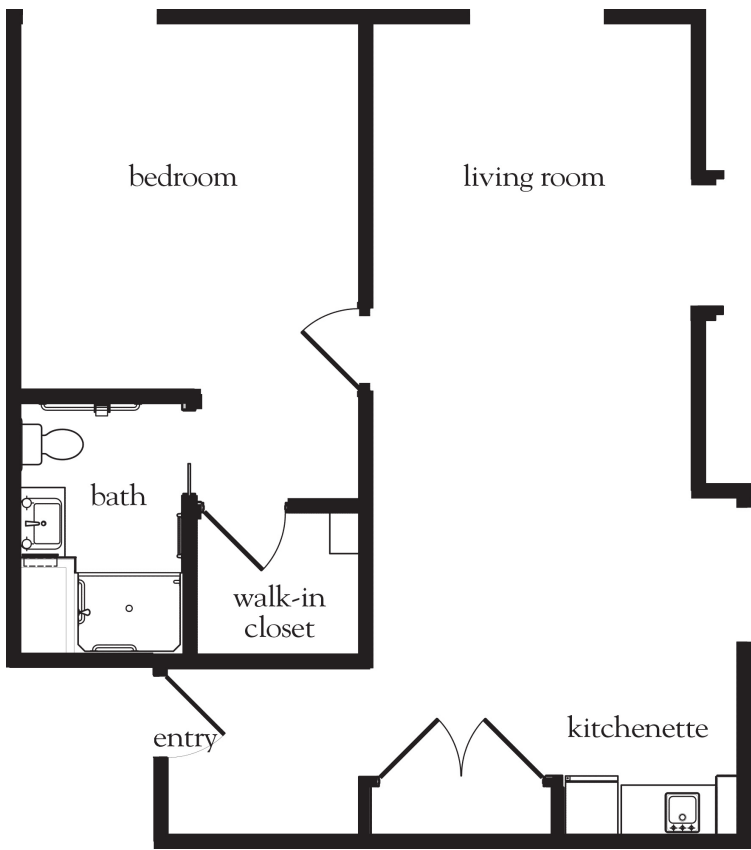
631.757.8000 | [AtriaEastNorthport.com](http://AtriaEastNorthport.com)

Measurements are an approximation and can vary by apartment.  
All rates are subject to change.  
License 700-F-929

## Rental Rate includes

- 24-hour staff
- Three chef-prepared meals per day
- Daily educational, social, cultural and fitness opportunities
- Housekeeping and linen services
- Scheduled bus and sedan transportation
- Utilities
- Wi-Fi in all common areas
- Apartment maintenance
- Cable TV
- On-site parking lot for residents and guests

# One Bedroom E



Apartment No. \_\_\_\_\_ Square Footage \_\_\_\_\_ Apartment Rate \_\_\_\_\_

Notes \_\_\_\_\_

\_\_\_\_\_

\_\_\_\_\_

\_\_\_\_\_

\_\_\_\_\_

Date Quoted \_\_\_\_\_ Quoted by \_\_\_\_\_ Rate Expires \_\_\_\_\_

*Atria* EAST NORTHPORT

631.757.8000 | [AtriaEastNorthport.com](http://AtriaEastNorthport.com)

Measurements are an approximation and can vary by apartment.  
All rates are subject to change.  
License 700-F-929

## Rental Rate includes

- 24-hour staff
- Three chef-prepared meals per day
- Daily educational, social, cultural and fitness opportunities
- Housekeeping and linen services
- Scheduled bus and sedan transportation
- Utilities
- Wi-Fi in all common areas
- Apartment maintenance
- Cable TV
- On-site parking lot for residents and guests

# One Bedroom F



Apartment No. \_\_\_\_\_ Square Footage \_\_\_\_\_ Apartment Rate \_\_\_\_\_

Notes \_\_\_\_\_

\_\_\_\_\_

\_\_\_\_\_

\_\_\_\_\_

\_\_\_\_\_

Date Quoted \_\_\_\_\_ Quoted by \_\_\_\_\_ Rate Expires \_\_\_\_\_

*Atria* EAST NORTHPORT

631.757.8000 | AtriaEastNorthport.com

Measurements are an approximation and can vary by apartment.  
All rates are subject to change.  
License 700-F-929

## Rental Rate includes

- 24-hour staff
- Three chef-prepared meals per day
- Daily educational, social, cultural and fitness opportunities
- Housekeeping and linen services
- Scheduled bus and sedan transportation
- Utilities
- Wi-Fi in all common areas
- Apartment maintenance
- Cable TV
- On-site parking lot for residents and guests