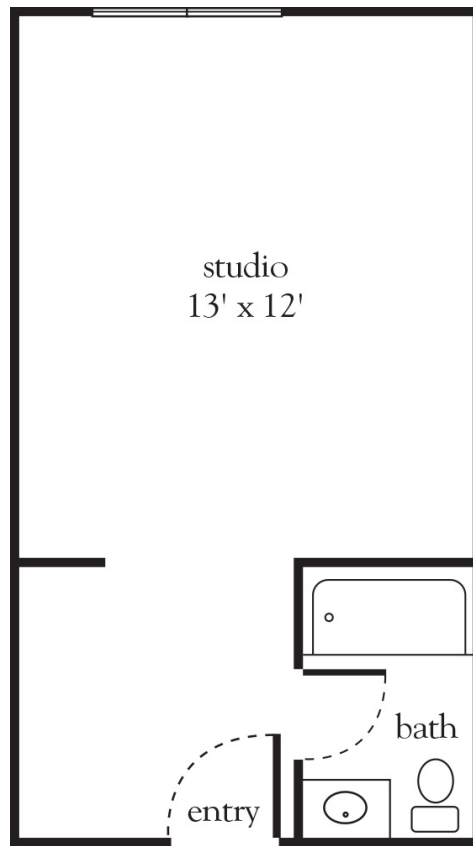


Studio



Apartment No. _____ Square Footage _____ Apartment Rate _____

Notes _____

Date Quoted _____ Quoted by _____ Rate Expires _____

Atria Park OF LYNBROOK

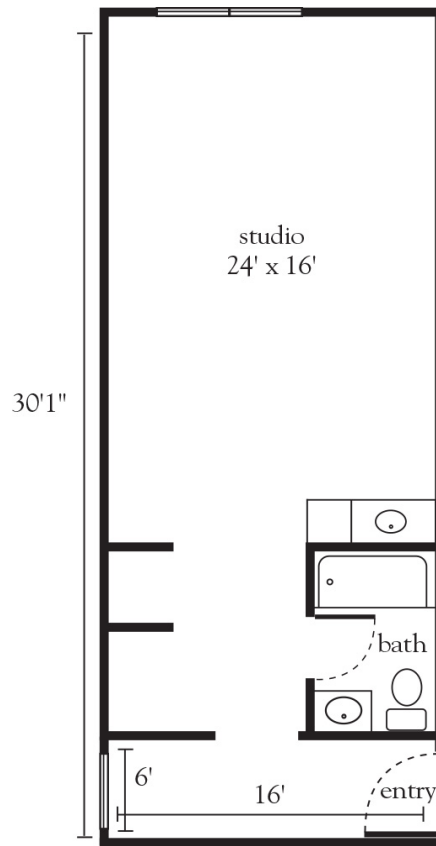
516.596.2700 | AtriaLynbrook.com

Measurements are an approximation and can vary by apartment.
All rates are subject to change.
License 400-F-326 Provision of ALR/EALR/SNALR services will commence upon approval of licensure by the New York State Department of Health.

Rental Rate includes

- 24-hour staff
- Three chef-prepared meals per day
- Daily educational, social, cultural and fitness opportunities
- Housekeeping, personal laundry and linen services
- Scheduled bus and sedan transportation
- Utilities
- Wi-Fi in all common areas
- Apartment maintenance
- On-site parking lot for residents and guests

Studio Deluxe A



Apartment No. _____ Square Footage _____ Apartment Rate _____

Notes _____

Date Quoted _____ Quoted by _____ Rate Expires _____

Atria Park OF LYNBROOK

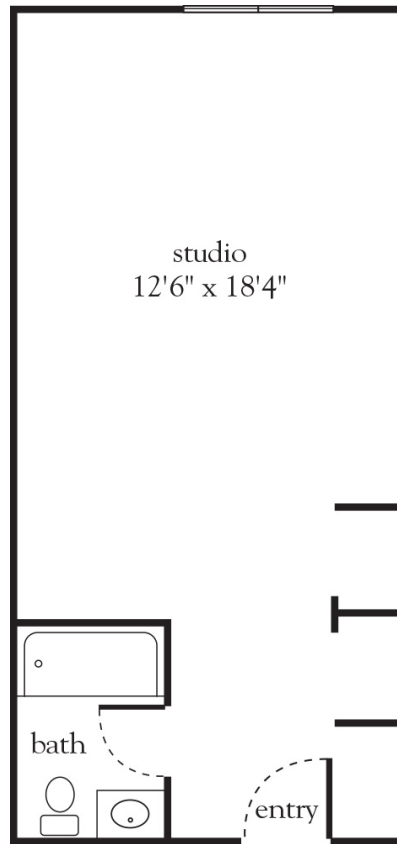
516.596.2700 | AtriaLynbrook.com

Measurements are an approximation and can vary by apartment.
 All rates are subject to change.
 License 400-F-326 Provision of ALR/EALR/SNALR services will commence upon approval of licensure by the
 New York State Department of Health.

Rental Rate includes

- 24-hour staff
- Three chef-prepared meals per day
- Daily educational, social, cultural and fitness opportunities
- Housekeeping, personal laundry and linen services
- Scheduled bus and sedan transportation
- Utilities
- Wi-Fi in all common areas
- Apartment maintenance
- On-site parking lot for residents and guests

Studio Deluxe B



Apartment No. _____ Square Footage _____ Apartment Rate _____

Notes _____

Date Quoted _____ Quoted by _____ Rate Expires _____

Atria Park OF LYNBROOK

516.596.2700 | AtriaLynbrook.com

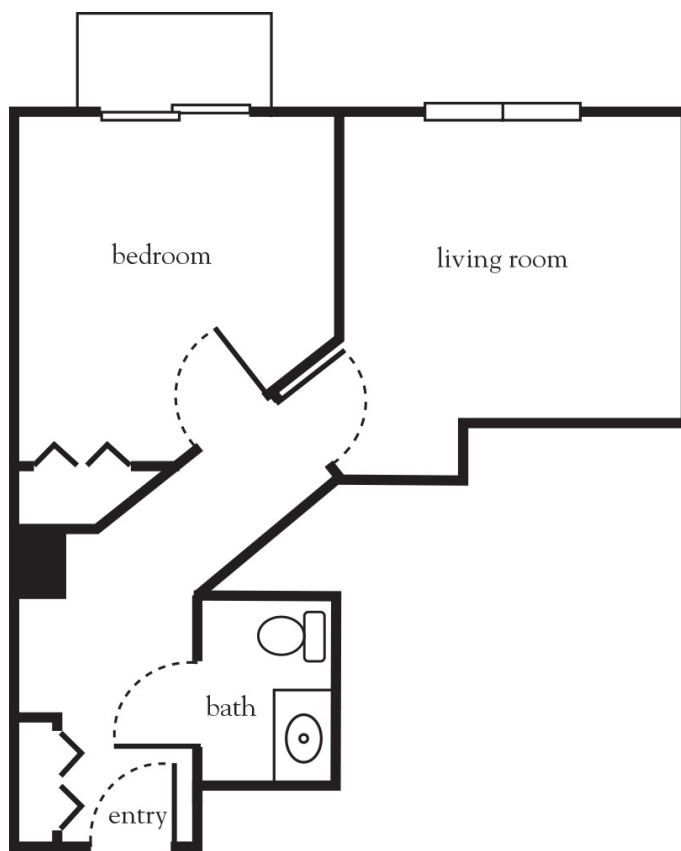
Measurements are an approximation and can vary by apartment.
All rates are subject to change.
License 400-F-326 Provision of ALR/EALR/SNALR services will commence upon approval of licensure by the New York State Department of Health.

267008

Rental Rate includes

- 24-hour staff
- Three chef-prepared meals per day
- Daily educational, social, cultural and fitness opportunities
- Housekeeping, personal laundry and linen services
- Scheduled bus and sedan transportation
- Utilities
- Wi-Fi in all common areas
- Apartment maintenance
- On-site parking lot for residents and guests

One Bedroom Suite ADA - A



Apartment No. _____ Square Footage _____ Apartment Rate _____

Notes _____

Date Quoted _____ Quoted by _____ Rate Expires _____

Atria Park OF LYNBROOK

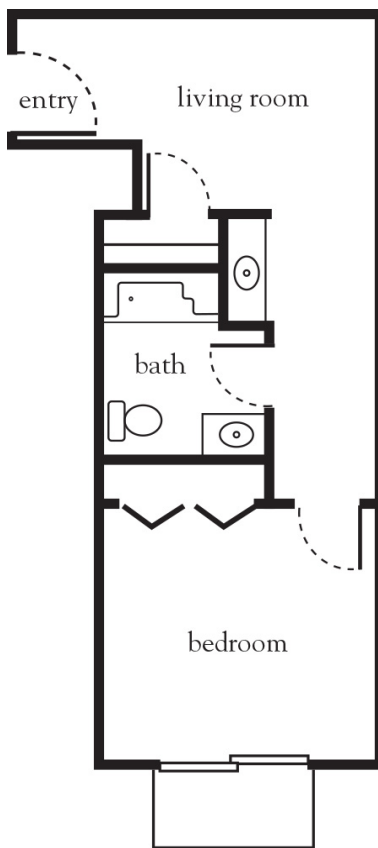
516.596.2700 | AtriaLynbrook.com

Measurements are an approximation and can vary by apartment.
 All rates are subject to change.
 License 400-F-326 Provision of ALR/EALR/SNALR services will commence upon approval of licensure by the
 New York State Department of Health.

Rental Rate includes

- 24-hour staff
- Three chef-prepared meals per day
- Daily educational, social, cultural and fitness opportunities
- Housekeeping, personal laundry and linen services
- Scheduled bus and sedan transportation
- Utilities
- Wi-Fi in all common areas
- Apartment maintenance
- On-site parking lot for residents and guests

One Bedroom Suite ADA - B



Apartment No. _____ Square Footage _____ Apartment Rate _____

Notes _____

Date Quoted _____ Quoted by _____ Rate Expires _____

Atria Park OF LYNBROOK

516.596.2700 | AtriaLynbrook.com

Measurements are an approximation and can vary by apartment.
All rates are subject to change.
License 400-F-326 Provision of ALR/EALR/SNALR services will commence upon approval of licensure by the New York State Department of Health.

Rental Rate includes

- 24-hour staff
- Three chef-prepared meals per day
- Daily educational, social, cultural and fitness opportunities
- Housekeeping, personal laundry and linen services
- Scheduled bus and sedan transportation
- Utilities
- Wi-Fi in all common areas
- Apartment maintenance
- On-site parking lot for residents and guests