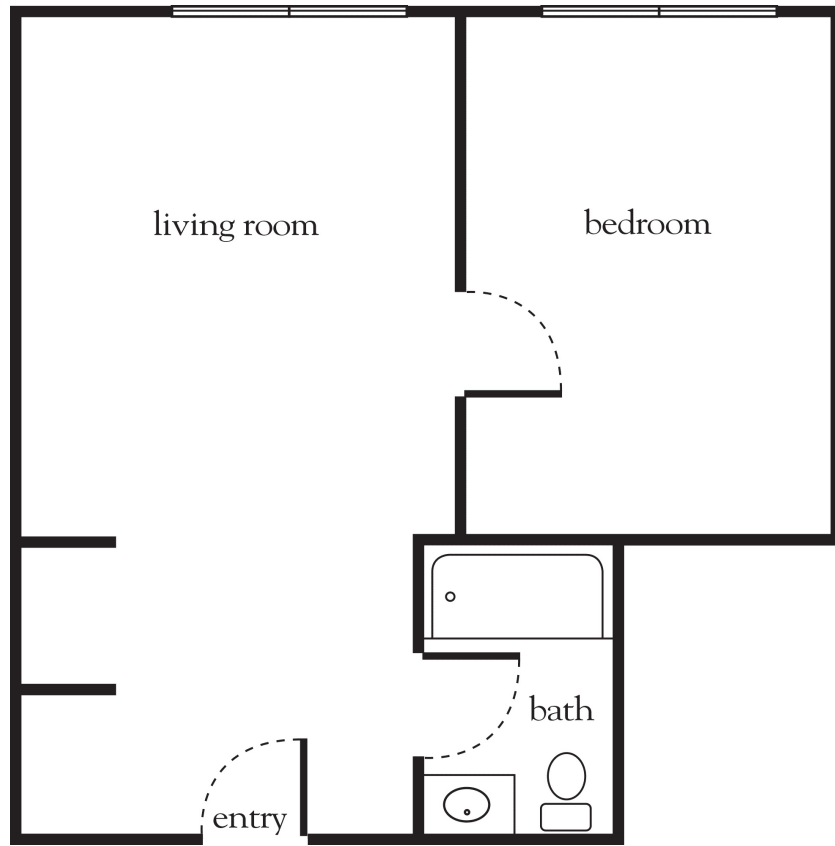


# One Bedroom



Apartment No. \_\_\_\_\_ Square Footage \_\_\_\_\_ Apartment Rate \_\_\_\_\_

Notes \_\_\_\_\_

---



---



---



---

Date Quoted \_\_\_\_\_ Quoted by \_\_\_\_\_ Rate Expires \_\_\_\_\_

*Atria Park* OF LYNBROOK

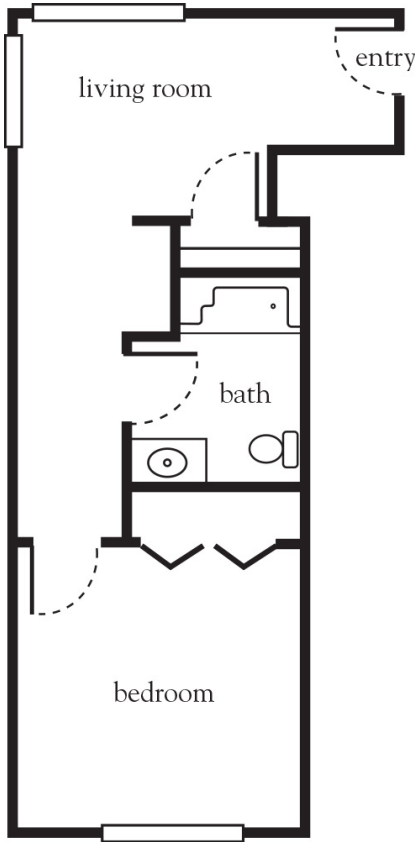
516.596.2700 | AtriaLynbrook.com

Measurements are an approximation and can vary by apartment.  
 All rates are subject to change.  
 License 400-F-326 Provision of ALR/EALR/SNALR services will commence upon approval of licensure by the  
 New York State Department of Health.

## Rental Rate includes

- 24-hour staff
- Three chef-prepared meals per day
- Daily educational, social, cultural and fitness opportunities
- Housekeeping, personal laundry and linen services
- Scheduled bus and sedan transportation
- Utilities
- Wi-Fi in all common areas
- Apartment maintenance
- On-site parking lot for residents and guests

# One Bedroom Suite



Apartment No. \_\_\_\_\_ Square Footage \_\_\_\_\_ Apartment Rate \_\_\_\_\_

Notes \_\_\_\_\_

---



---



---



---

Date Quoted \_\_\_\_\_ Quoted by \_\_\_\_\_ Rate Expires \_\_\_\_\_

*Atria Park* OF LYNBROOK

516.596.2700 | AtriaLynbrook.com

Measurements are an approximation and can vary by apartment.  
 All rates are subject to change.  
 License 400-F-326 Provision of ALR/EALR/SNALR services will commence upon approval of licensure by the  
 New York State Department of Health.

## Rental Rate includes

- 24-hour staff
- Three chef-prepared meals per day
- Daily educational, social, cultural and fitness opportunities
- Housekeeping, personal laundry and linen services
- Scheduled bus and sedan transportation
- Utilities
- Wi-Fi in all common areas
- Apartment maintenance
- On-site parking lot for residents and guests