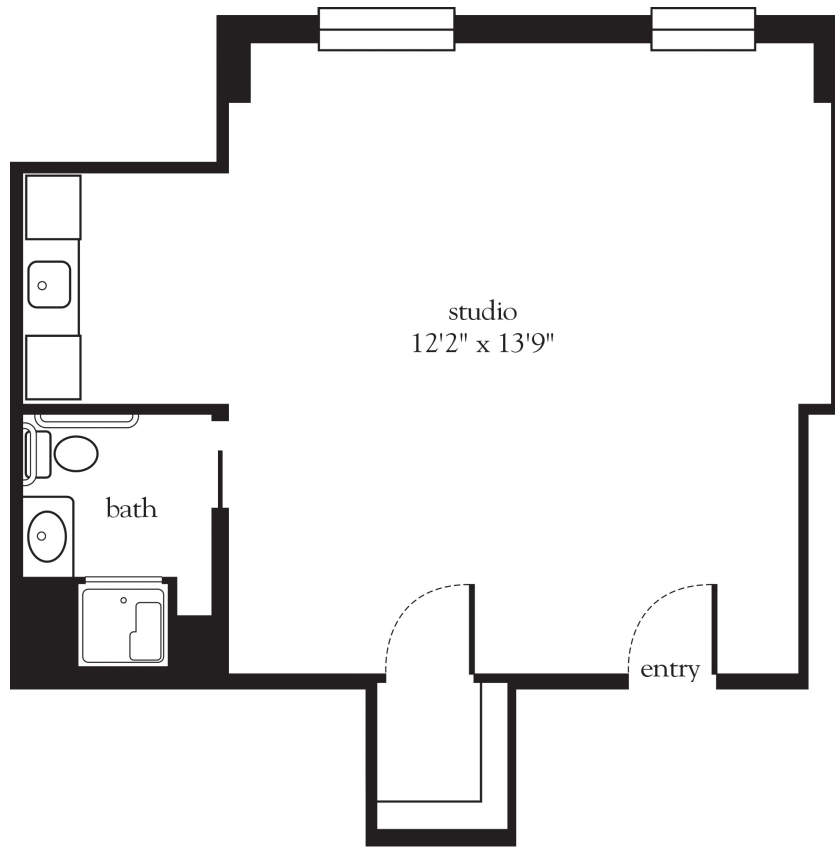


# Life Guidance<sup>®</sup> Memory Care Studio



Apartment No. \_\_\_\_\_ Square Footage \_\_\_\_\_ Apartment Rate \_\_\_\_\_

Notes \_\_\_\_\_

\_\_\_\_\_  
\_\_\_\_\_  
\_\_\_\_\_

Date Quoted \_\_\_\_\_ Quoted by \_\_\_\_\_ Rate Expires \_\_\_\_\_

*Atria* KEW GARDENS

718.441.0300 | [AtriaKewGardens.com](http://AtriaKewGardens.com)

Measurements are an approximation and can vary by apartment.  
All rates are subject to change.  
License 590-S-315 We are kosher under the Vaad Harabonim of Queens.