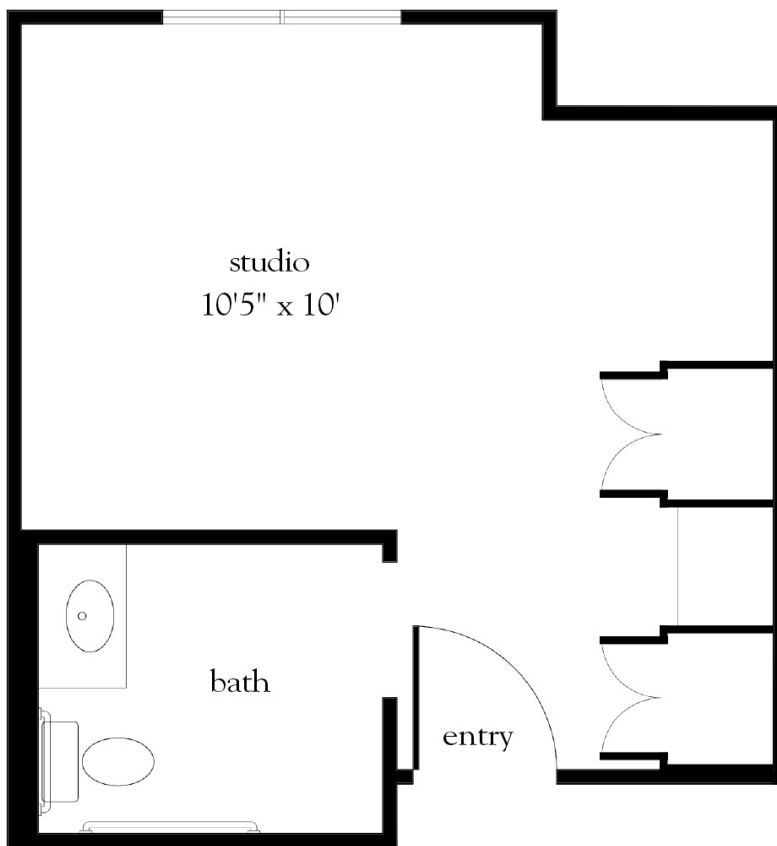


Life Guidance® Memory Care Shared Studio



Apartment No. _____ Square Footage _____ Apartment Rate _____

Notes _____

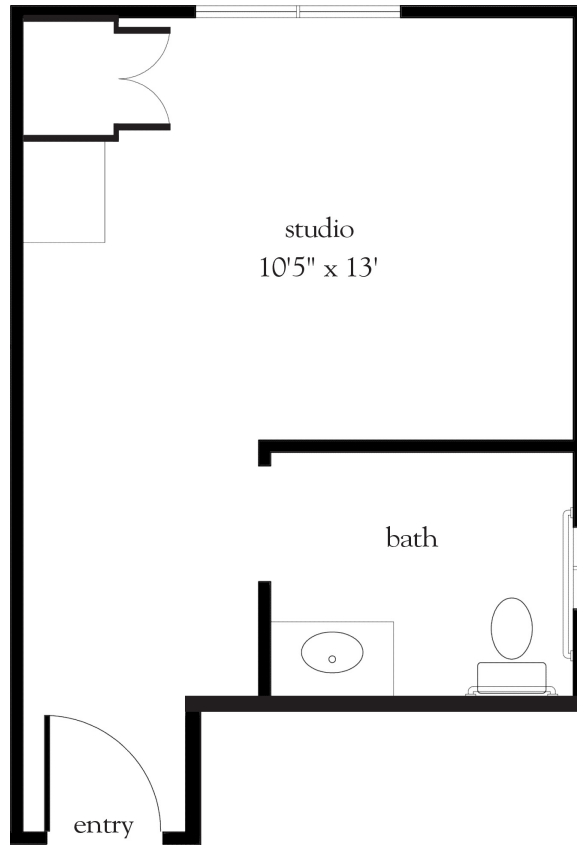
Date Quoted _____ Quoted by _____ Rate Expires _____

Atria Park OF LAFAYETTE

925.932.9910 | AtriaLafayette.com

Measurements are an approximation and can vary by apartment.
All rates are subject to change.
License #079200326

Life Guidance® Memory Care Studio



Apartment No. _____ Square Footage _____ Apartment Rate _____

Notes _____

Date Quoted _____ Quoted by _____ Rate Expires _____

Atria Park OF LAFAYETTE

925.932.9910 | AtriaLafayette.com

Measurements are an approximation and can vary by apartment.
All rates are subject to change.
License #079200326