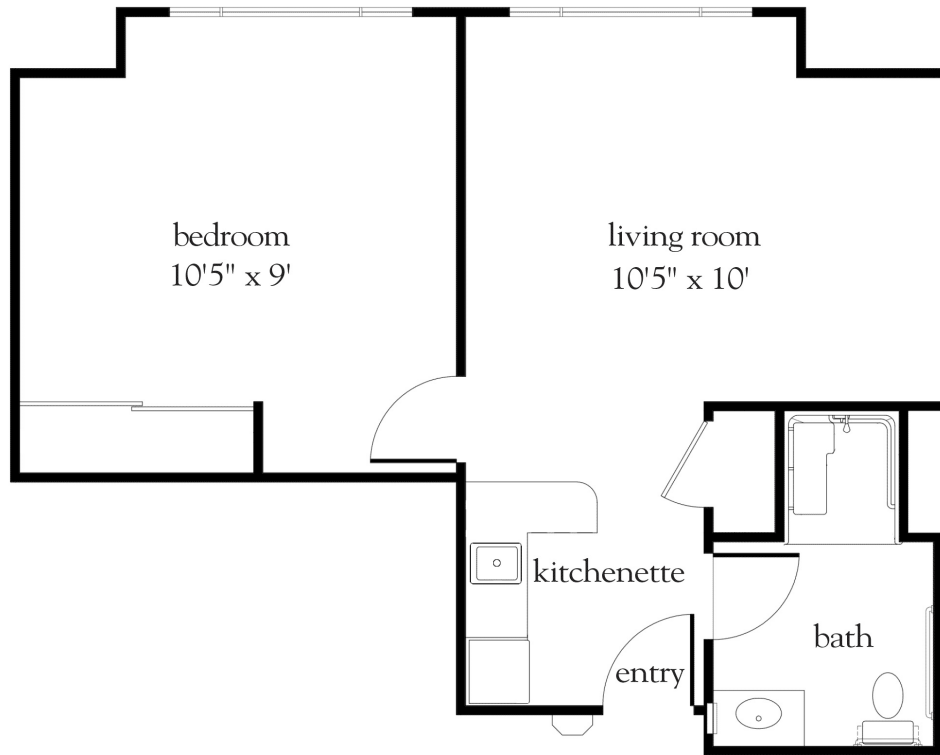


Countryside - One Bedroom



Apartment No. _____ Square Footage _____ Apartment Rate _____

Notes _____

Date Quoted _____ Quoted by _____ Rate Expires _____

Atria Park OF LAFAYETTE

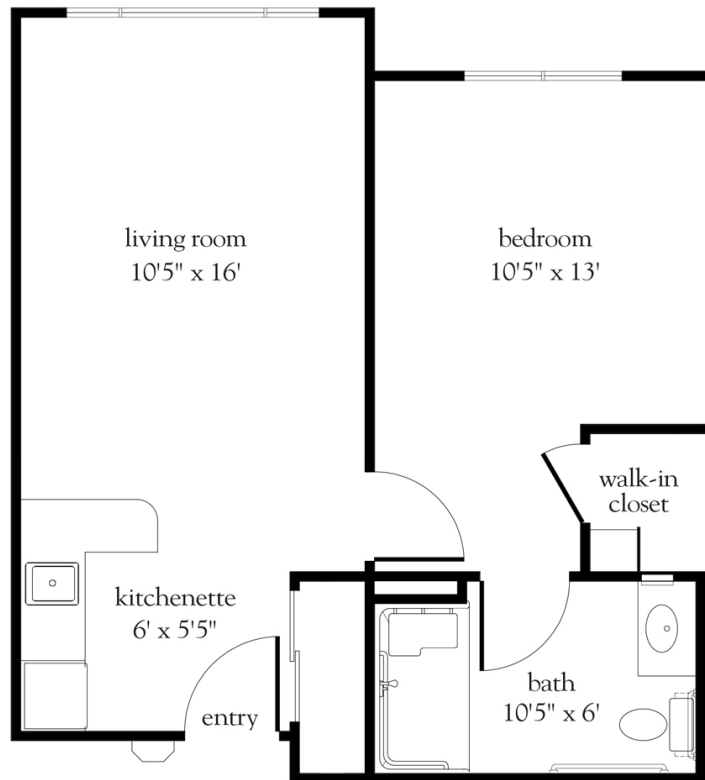
925.932.9910 | AtriaLafayette.com

Measurements are an approximation and can vary by apartment.
All rates are subject to change.
License #079200326

Rental Rate includes

- 24-hour staff
- Three chef-prepared meals per day
- Daily educational, social, cultural and fitness opportunities
- Housekeeping and linen services
- Scheduled bus and sedan transportation
- Utilities
- Wi-Fi in all common areas
- Apartment maintenance
- Concierge service
- Individual thermostat control

Creekside - One Bedroom



Apartment No. _____ Square Footage _____ Apartment Rate _____

Notes _____

Date Quoted _____ Quoted by _____ Rate Expires _____

Atria Park OF LAFAYETTE

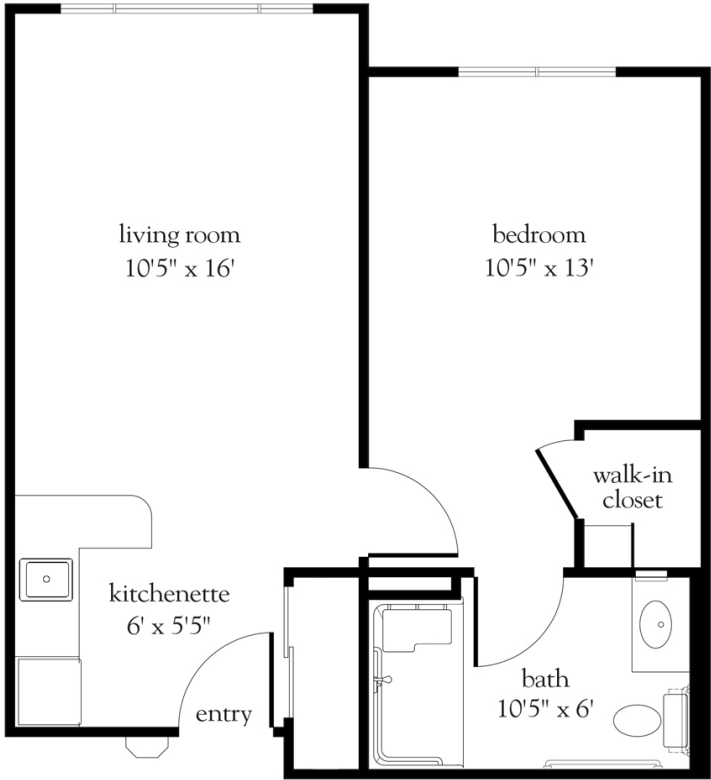
925.932.9910 | AtriaLafayette.com

Measurements are an approximation and can vary by apartment.
All rates are subject to change.
License #079200326

Rental Rate includes

- 24-hour staff
- Three chef-prepared meals per day
- Daily educational, social, cultural and fitness opportunities
- Housekeeping and linen services
- Scheduled bus and sedan transportation
- Utilities
- Wi-Fi in all common areas
- Apartment maintenance
- Concierge service
- Individual thermostat control

Mountain View - One Bedroom



Apartment No. _____ Square Footage _____ Apartment Rate _____

Notes _____

Date Quoted _____ Quoted by _____ Rate Expires _____

Atria Park OF LAFAYETTE

925.932.9910 | AtriaLafayette.com

Measurements are an approximation and can vary by apartment.
 All rates are subject to change.
 License #079200326

Rental Rate includes

- 24-hour staff
- Three chef-prepared meals per day
- Daily educational, social, cultural and fitness opportunities
- Housekeeping and linen services
- Scheduled bus and sedan transportation
- Utilities
- Wi-Fi in all common areas
- Apartment maintenance
- Concierge service
- Individual thermostat control