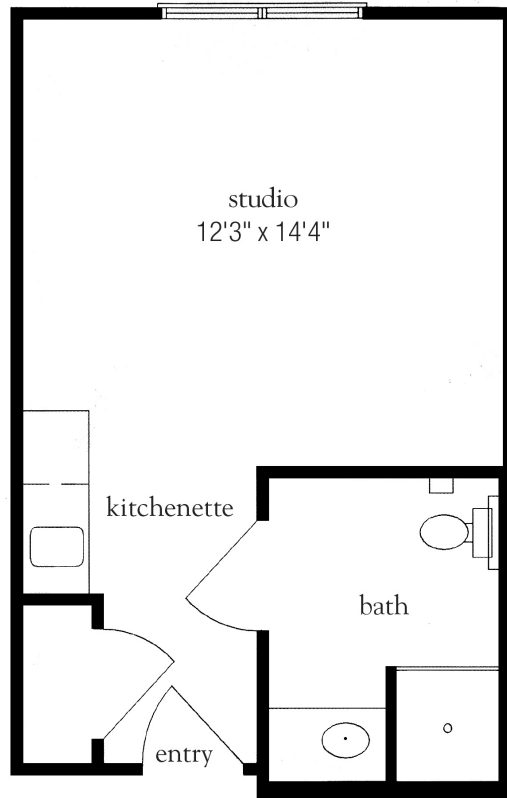


# Assisted Living Studio



Apartment No. \_\_\_\_\_ Square Footage \_\_\_\_\_ Apartment Rate \_\_\_\_\_

Notes \_\_\_\_\_

\_\_\_\_\_

\_\_\_\_\_

\_\_\_\_\_

\_\_\_\_\_

Date Quoted \_\_\_\_\_ Quoted by \_\_\_\_\_ Rate Expires \_\_\_\_\_

*Atria* SOUTHPOINT WALK

919.401.0100 | [AtriaSouthpointWalk.com](http://AtriaSouthpointWalk.com)

Measurements are an approximation and can vary by apartment.  
All rates are subject to change.  
HAL-032-131

## Rental Rate includes

- 24-hour staff
- Two chef-prepared meals per day
- Daily educational, social, cultural and fitness opportunities
- Housekeeping and linen services
- Scheduled bus and sedan transportation
- Utilities
- Wi-Fi in all common areas
- In-apartment washer and dryer hookups - selected apartments
- Apartment maintenance