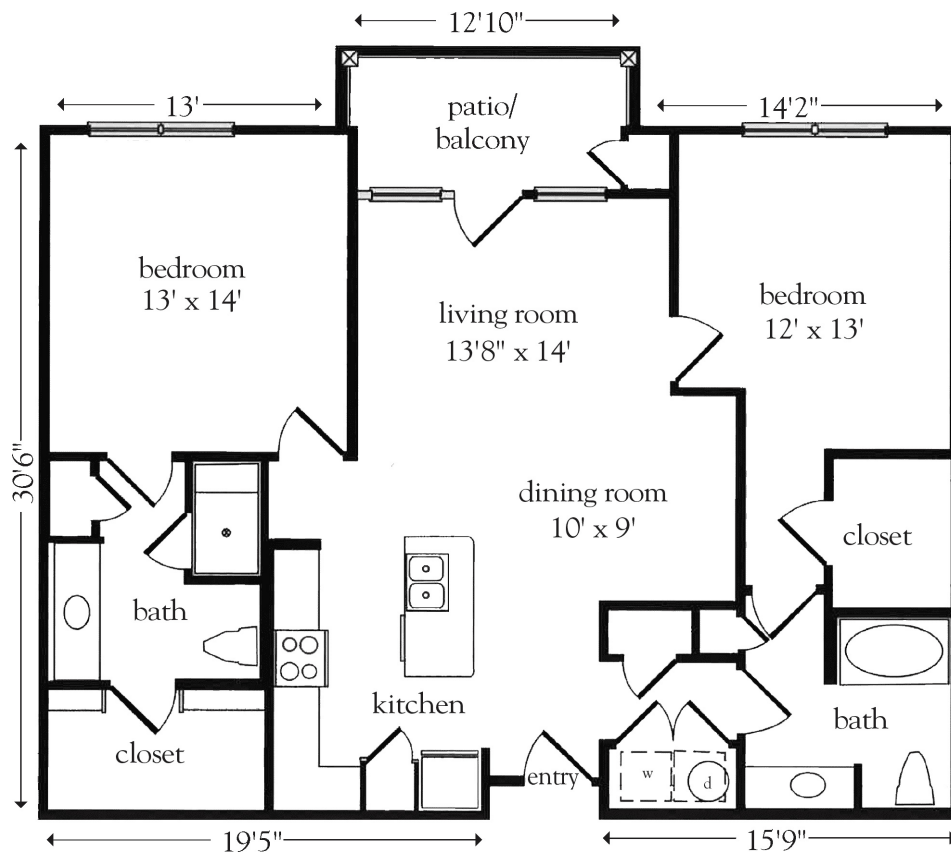


# The Capri - Two Bedroom



Apartment No. \_\_\_\_\_ Square Footage \_\_\_\_\_ Apartment Rate \_\_\_\_\_

Notes \_\_\_\_\_

\_\_\_\_\_

\_\_\_\_\_

\_\_\_\_\_

\_\_\_\_\_

Date Quoted \_\_\_\_\_ Quoted by \_\_\_\_\_ Rate Expires \_\_\_\_\_

*Atria* CANYON CREEK

469.467.2262 | AtriaCanyonCreek.com

Measurements are an approximation and can vary by apartment.  
All rates are subject to change.

## Rental Rate includes

- 24-hour staff
- Two chef-prepared meals per day
- Scheduled bus and sedan transportation
- Utilities
- Twice Monthly Housekeeping
- Apartment maintenance
- Cable TV
- On-site parking lot for residents and guests
- Concierge service
- Emergency alert system

# The Contenta - Two Bedroom



## Rental Rate includes

- 24-hour staff
- Two chef-prepared meals per day
- Scheduled bus and sedan transportation
- Utilities
- Twice Monthly Housekeeping
- Apartment maintenance
- Cable TV
- On-site parking lot for residents and guests
- Concierge service
- Emergency alert system

Apartment No. \_\_\_\_\_ Square Footage \_\_\_\_\_ Apartment Rate \_\_\_\_\_

Notes \_\_\_\_\_

\_\_\_\_\_

\_\_\_\_\_

\_\_\_\_\_

\_\_\_\_\_

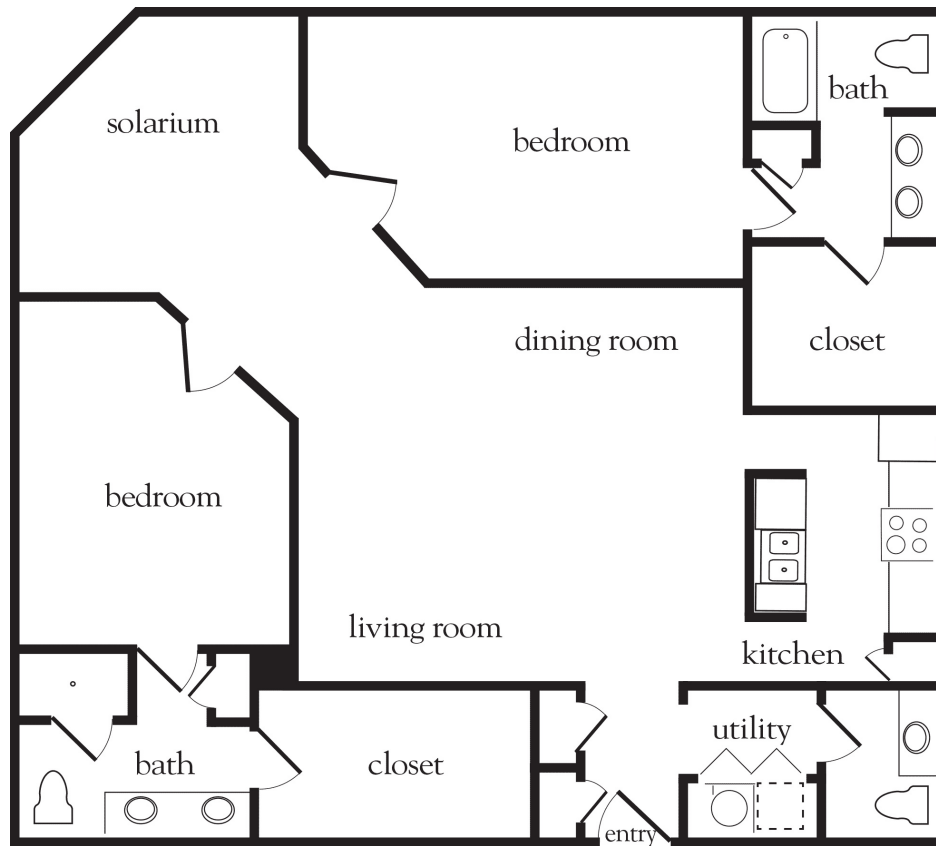
Date Quoted \_\_\_\_\_ Quoted by \_\_\_\_\_ Rate Expires \_\_\_\_\_

*Atria* CANYON CREEK

469.467.2262 | AtriaCanyonCreek.com

Measurements are an approximation and can vary by apartment.  
All rates are subject to change.

# The Mirabelle - Two Bedroom



Apartment No. \_\_\_\_\_ Square Footage \_\_\_\_\_ Apartment Rate \_\_\_\_\_

Notes \_\_\_\_\_

\_\_\_\_\_

\_\_\_\_\_

\_\_\_\_\_

\_\_\_\_\_

Date Quoted \_\_\_\_\_ Quoted by \_\_\_\_\_ Rate Expires \_\_\_\_\_

*Atria* CANYON CREEK

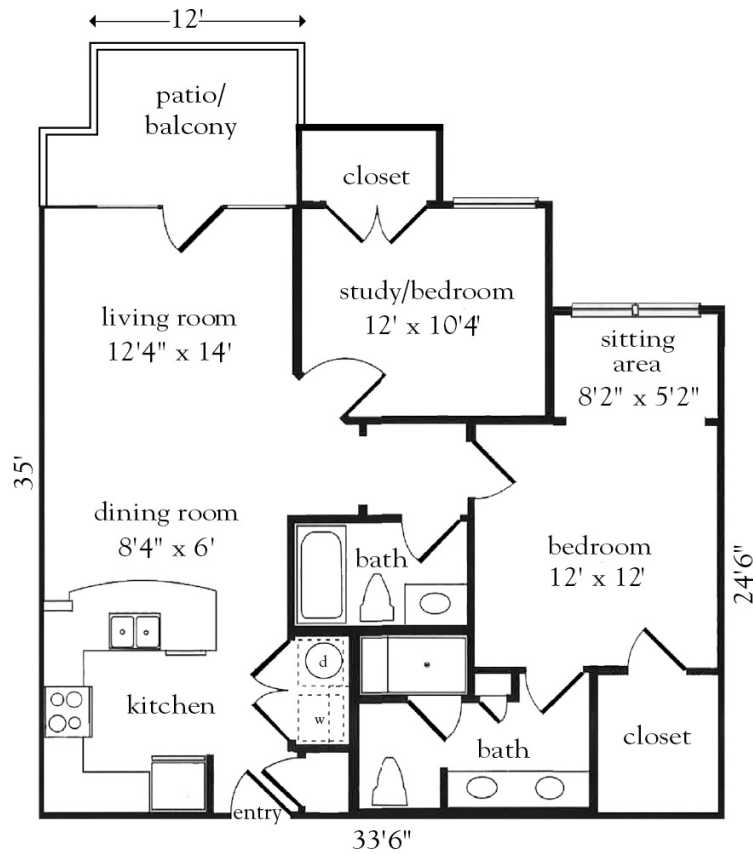
469.467.2262 | AtriaCanyonCreek.com

Measurements are an approximation and can vary by apartment.  
All rates are subject to change.

## Rental Rate includes

- 24-hour staff
- Two chef-prepared meals per day
- Scheduled bus and sedan transportation
- Utilities
- Twice Monthly Housekeeping
- Apartment maintenance
- Cable TV
- On-site parking lot for residents and guests
- Concierge service
- Emergency alert system

# The Sorrento - Two Bedroom



Apartment No. \_\_\_\_\_ Square Footage \_\_\_\_\_ Apartment Rate \_\_\_\_\_

Notes \_\_\_\_\_

\_\_\_\_\_

\_\_\_\_\_

\_\_\_\_\_

\_\_\_\_\_

Date Quoted \_\_\_\_\_ Quoted by \_\_\_\_\_ Rate Expires \_\_\_\_\_

*Atria* CANYON CREEK

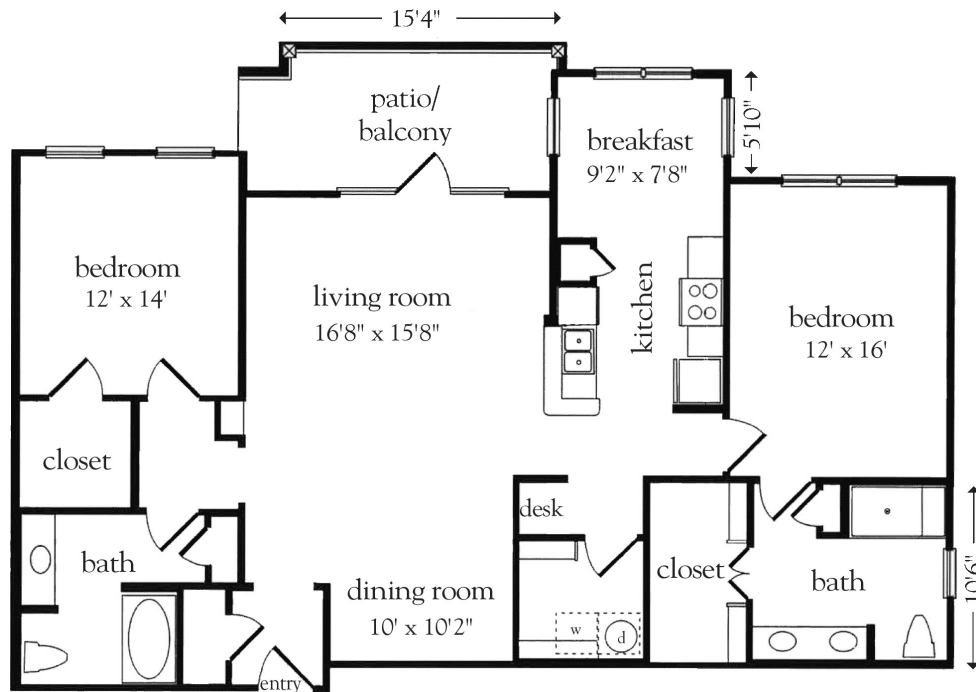
469.467.2262 | AtriaCanyonCreek.com

Measurements are an approximation and can vary by apartment.  
All rates are subject to change.

## Rental Rate includes

- 24-hour staff
- Two chef-prepared meals per day
- Scheduled bus and sedan transportation
- Utilities
- Twice Monthly Housekeeping
- Apartment maintenance
- Cable TV
- On-site parking lot for residents and guests
- Concierge service
- Emergency alert system

# The Venezia - Two Bedroom



Apartment No. \_\_\_\_\_ Square Footage \_\_\_\_\_ Apartment Rate \_\_\_\_\_

Notes \_\_\_\_\_

\_\_\_\_\_

\_\_\_\_\_

\_\_\_\_\_

\_\_\_\_\_

Date Quoted \_\_\_\_\_ Quoted by \_\_\_\_\_ Rate Expires \_\_\_\_\_

*Atria* CANYON CREEK

469.467.2262 | AtriaCanyonCreek.com

Measurements are an approximation and can vary by apartment.  
All rates are subject to change.

## Rental Rate includes

- 24-hour staff
- Two chef-prepared meals per day
- Scheduled bus and sedan transportation
- Utilities
- Twice Monthly Housekeeping
- Apartment maintenance
- Cable TV
- On-site parking lot for residents and guests
- Concierge service
- Emergency alert system