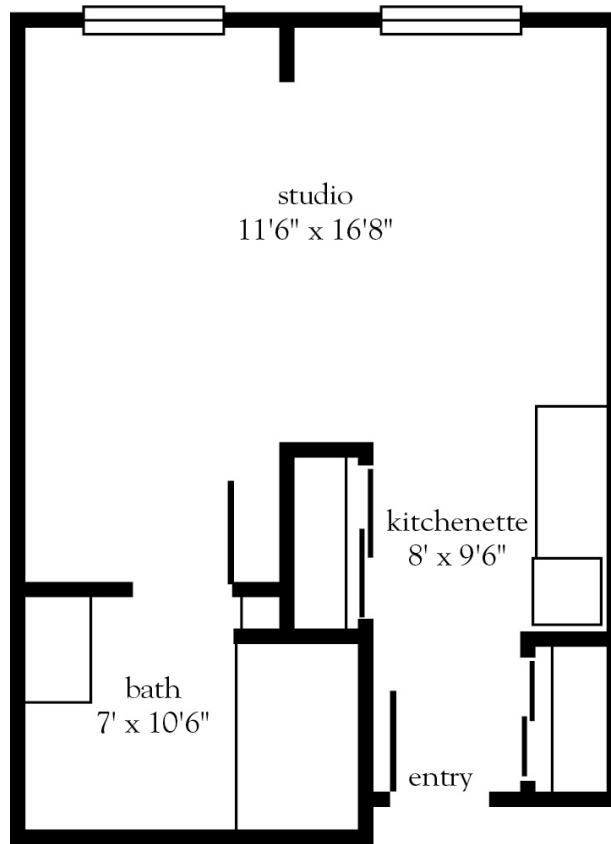


Assisted/Independent Living Studio



Apartment No. _____ Square Footage _____ Apartment Rate _____

Notes _____

Date Quoted _____ Quoted by _____ Rate Expires _____

Atria CAMPANA DEL RIO

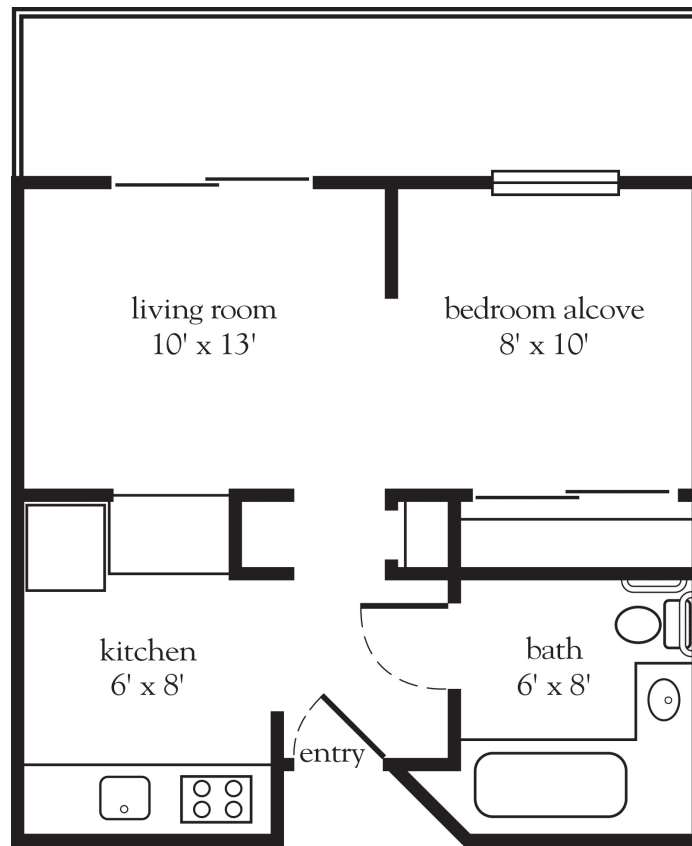
520.299.1941 | AtriaCampanaDelRio.com

Measurements are an approximation and can vary by apartment.
All rates are subject to change.

Rental Rate includes

- 24-hour staff
- Three chef-prepared meals per day for Assisted Living residents
- Two chef-prepared meals per day for Independent Living residents
- Daily educational, social, cultural and fitness opportunities
- Housekeeping and linen services
- Scheduled bus and sedan transportation
- Utilities

Assisted/Independent Living Studio



Apartment No. _____ Square Footage _____ Apartment Rate _____

Notes _____

Date Quoted _____ Quoted by _____ Rate Expires _____

Atria CAMPANA DEL RIO

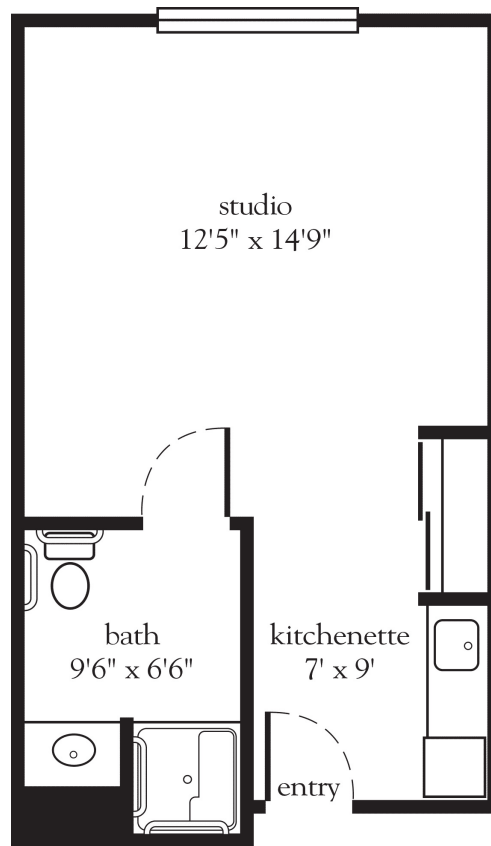
520.299.1941 | AtriaCampanaDelRio.com

Measurements are an approximation and can vary by apartment.
All rates are subject to change.

Rental Rate includes

- 24-hour staff
- Three chef-prepared meals per day for Assisted Living residents
- Two chef-prepared meals per day for Independent Living residents
- Daily educational, social, cultural and fitness opportunities
- Housekeeping and linen services
- Scheduled bus and sedan transportation
- Utilities

Assisted/Independent Living Studio



Apartment No. _____ Square Footage _____ Apartment Rate _____

Notes _____

Date Quoted _____ Quoted by _____ Rate Expires _____

Atria CAMPANA DEL RIO

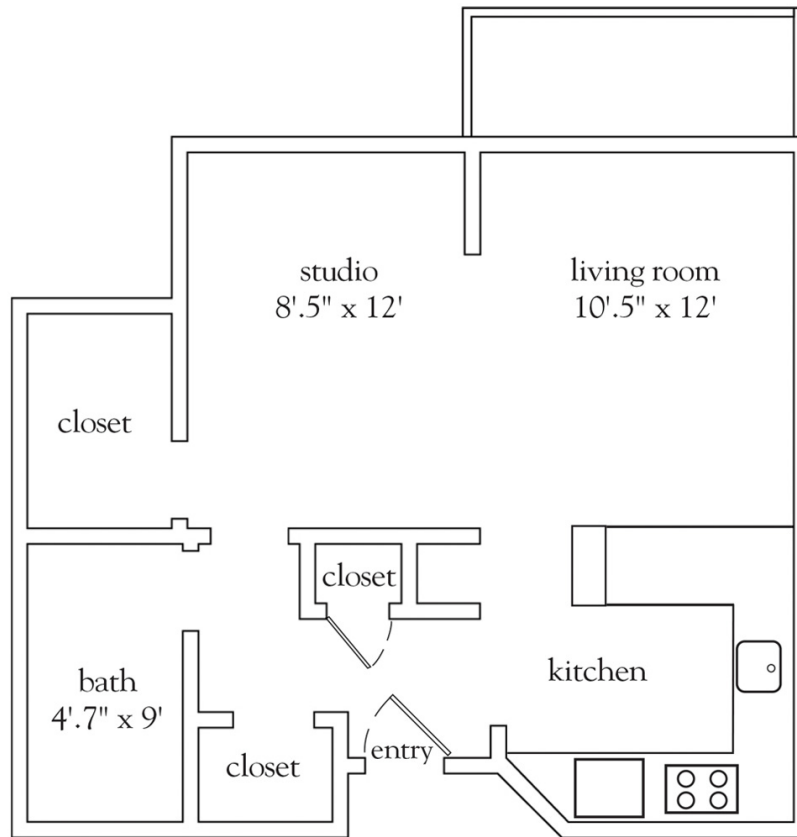
520.299.1941 | AtriaCampanaDelRio.com

Measurements are an approximation and can vary by apartment.
All rates are subject to change.

Rental Rate includes

- 24-hour staff
- Three chef-prepared meals per day for Assisted Living residents
- Two chef-prepared meals per day for Independent Living residents
- Daily educational, social, cultural and fitness opportunities
- Housekeeping and linen services
- Scheduled bus and sedan transportation
- Utilities

Assisted/Independent Living Studio



Apartment No. _____ Square Footage _____ Apartment Rate _____

Notes _____

Date Quoted _____ Quoted by _____ Rate Expires _____

Atria CAMPANA DEL RIO

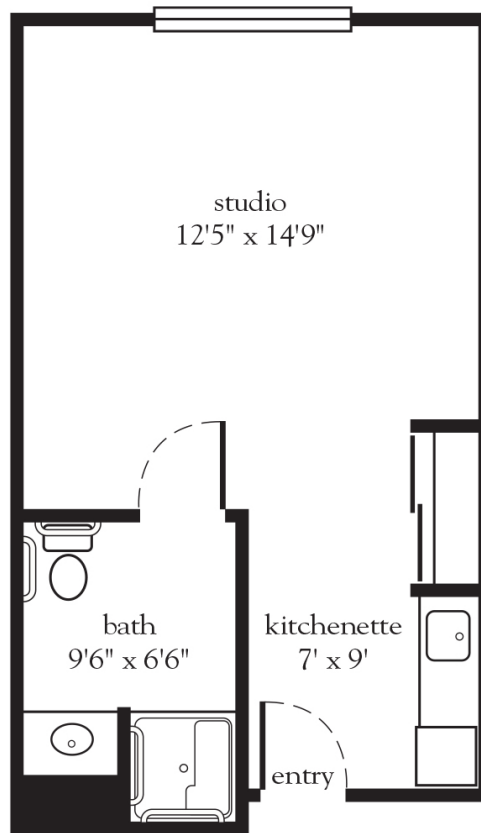
520.299.1941 | AtriaCampanaDelRio.com

Measurements are an approximation and can vary by apartment.
All rates are subject to change.

Rental Rate includes

- 24-hour staff
- Three chef-prepared meals per day for Assisted Living residents
- Two chef-prepared meals per day for Independent Living residents
- Daily educational, social, cultural and fitness opportunities
- Housekeeping and linen services
- Scheduled bus and sedan transportation
- Utilities

Assisted/Independent Living Studio - 350 square feet



Apartment No. _____ Square Footage _____ Apartment Rate _____

Notes _____

Date Quoted _____ Quoted by _____ Rate Expires _____

Atria CAMPANA DEL RIO

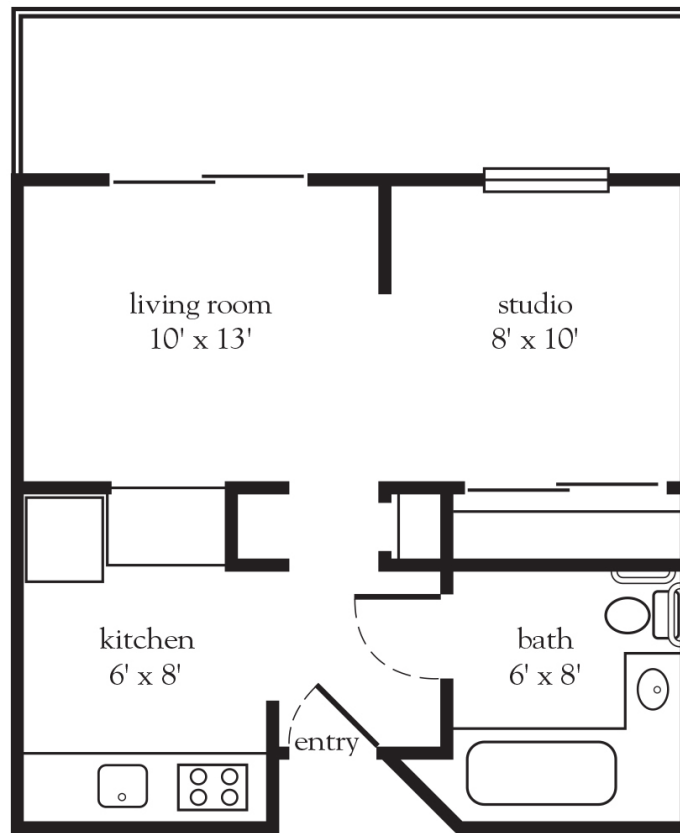
520.299.1941 | AtriaCampanaDelRio.com

Measurements are an approximation and can vary by apartment.
All rates are subject to change.

Rental Rate includes

- 24-hour staff
- Three chef-prepared meals per day for Assisted Living residents
- Two chef-prepared meals per day for Independent Living residents
- Daily educational, social, cultural and fitness opportunities
- Housekeeping and linen services
- Scheduled bus and sedan transportation
- Utilities

Assisted/Independent Living Studio - 350 square feet



Apartment No. _____ Square Footage _____ Apartment Rate _____

Notes _____

Date Quoted _____ Quoted by _____ Rate Expires _____

Atria CAMPANA DEL RIO

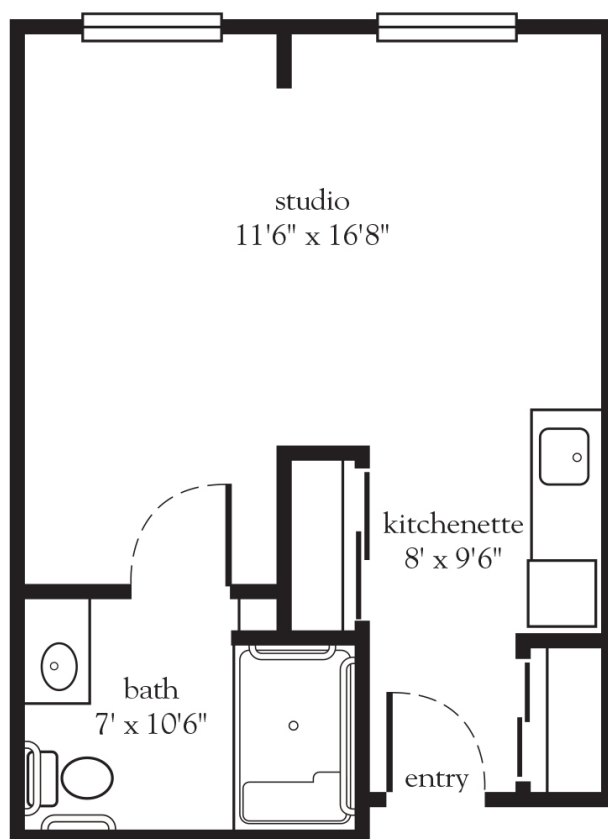
520.299.1941 | AtriaCampanaDelRio.com

Measurements are an approximation and can vary by apartment.
All rates are subject to change.

Rental Rate includes

- 24-hour staff
- Three chef-prepared meals per day for Assisted Living residents
- Two chef-prepared meals per day for Independent Living residents
- Daily educational, social, cultural and fitness opportunities
- Housekeeping and linen services
- Scheduled bus and sedan transportation
- Utilities

Assisted/Independent Living Studio - 365 square feet



Apartment No. _____ Square Footage _____ Apartment Rate _____

Notes _____

Date Quoted _____ Quoted by _____ Rate Expires _____

Atria CAMPANA DEL RIO

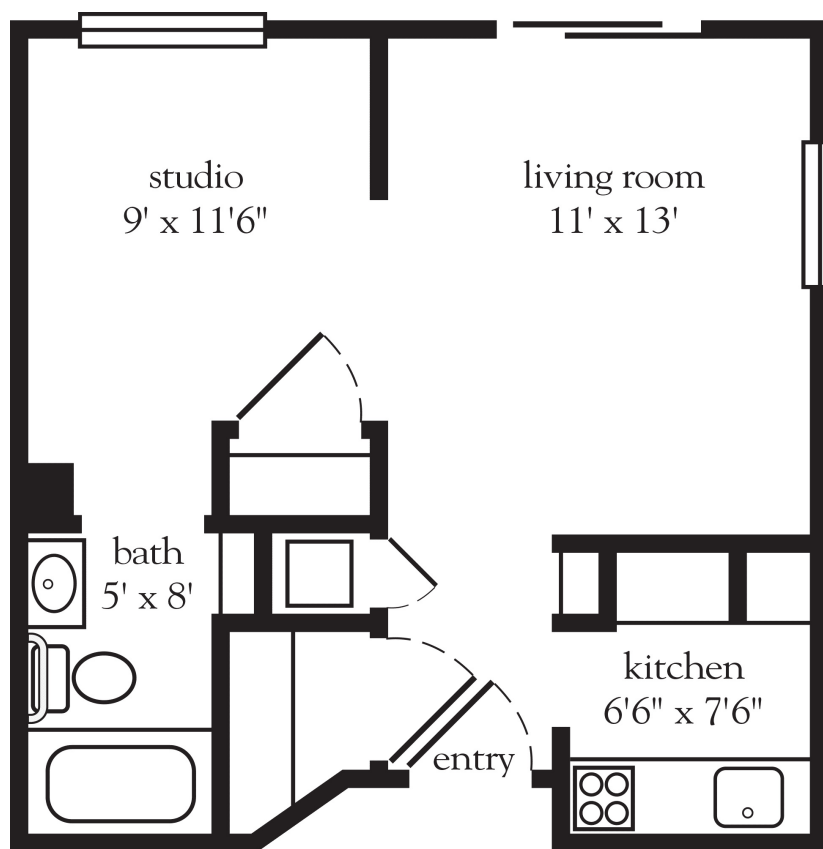
520.299.1941 | AtriaCampanaDelRio.com

Measurements are an approximation and can vary by apartment.
All rates are subject to change.

Rental Rate includes

- 24-hour staff
- Three chef-prepared meals per day for Assisted Living residents
- Two chef-prepared meals per day for Independent Living residents
- Daily educational, social, cultural and fitness opportunities
- Housekeeping and linen services
- Scheduled bus and sedan transportation
- Utilities

Assisted/Independent Living Studio - 430 square feet



Apartment No. _____ Square Footage _____ Apartment Rate _____

Notes _____

Date Quoted _____ Quoted by _____ Rate Expires _____

Atria CAMPANA DEL RIO

520.299.1941 | AtriaCampanaDelRio.com

Measurements are an approximation and can vary by apartment.
All rates are subject to change.

Rental Rate includes

- 24-hour staff
- Three chef-prepared meals per day for Assisted Living residents
- Two chef-prepared meals per day for Independent Living residents
- Daily educational, social, cultural and fitness opportunities
- Housekeeping and linen services
- Scheduled bus and sedan transportation
- Utilities