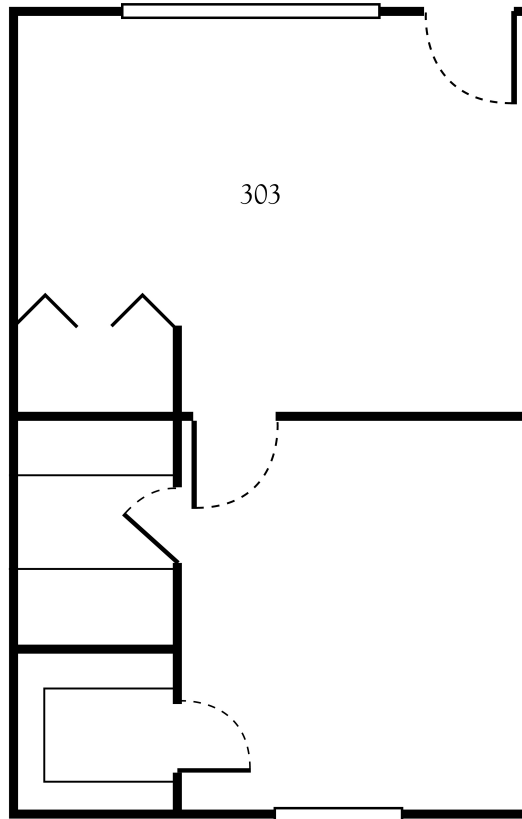


# Two Bedroom Deluxe



Apartment No. \_\_\_\_\_ Square Footage \_\_\_\_\_ Apartment Rate \_\_\_\_\_

Notes \_\_\_\_\_

\_\_\_\_\_

\_\_\_\_\_

\_\_\_\_\_

\_\_\_\_\_

Date Quoted \_\_\_\_\_ Quoted by \_\_\_\_\_ Rate Expires \_\_\_\_\_

*Atria* WILLOW PARK

903.561.4302 | [AtriaWillowPark.com](http://AtriaWillowPark.com)

Measurements are an approximation and can vary by apartment.  
All rates are subject to change.  
Facility ID #000947

## Rental Rate includes

- 24-hour staff
- Three chef-prepared meals per day
- Daily educational, social, cultural and fitness opportunities
- Housekeeping and linen services
- Scheduled bus and sedan transportation
- Utilities
- Wi-Fi
- Apartment maintenance
- On-site parking lot for guests
- Individual thermostat control